



TECE

DESIGN WITHOUT COMPROMISE

TECEdrainline - the exclusive shower channel
for the highest architectural demands

Drainage systems

close to you



CONTENTS

03	Reliability can be this beautiful
04	Form and function in perfect harmony
08	Design covers
14	Hygiene at its best
16	TECEdrainline – the classic
18	TECEdrainline-Evo
20	Secondary drainage, yes, no or both?
22	TECEdrainline modular system
24	Drains and accessories
28	Drainage without compromise
29	Simply standard-compliant!
30	Seal System – Composite seal, independently tested
31	Safe and quiet - without exception
32	TECE drainage solutions





» The ideal shower channel is a symbiosis of functionality and aesthetics. «

RELIABILITY CAN BE THIS BEAUTIFUL

03

Maximum design freedom, hygiene and reliability are key requirements when it comes to shower drainage.

With shower channels from TECE, the highest design standards can be realised thanks to flexible application options and high-quality materials. Whether integrated almost invisibly or as a high-contrast eye-catcher, they are a statement for timeless design and the highest technical precision. The careful workmanship and tested composite seal guarantee outstanding functionality and durability.

Attractive, hygienic, reliable: the hallmarks of drainage systems made by TECE.

FORM AND FUNCTION IN PERFECT HARMONY

Tried and tested a million times

For us, good design is not just a question of aesthetics, it's also always one of functionality. Simple and safe installation, optimum hygiene properties and flexible installation options are just as important as a clear design language and high-quality materials. Decades of experience are the foundation of uncompromising drainage systems that designers, installers, and end customers can rely on.

Greater comfort for everyone

TECEdrainline creates floor-level shower space and offers comfort without barriers for all users, whether young or old, with or without restricted mobility. No steps or edges that could restrict the user's everyday life in an unattractive or impractical way.



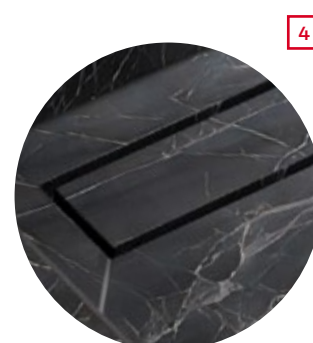
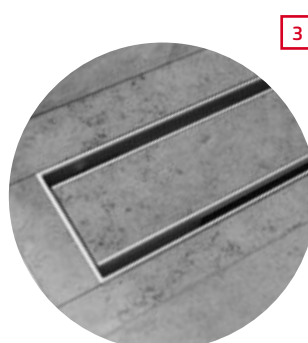
04



1

Design that leaves room to manoeuvre

The design variants of TECEdrainline fulfil individual design wishes, enable perfect integration into the bathroom ambience and therefore make bathroom spaces appear larger. With stainless steel or glass covers, they create elegant accents, while as a support for natural stone or a tileable tray, they integrate almost invisibly into the shower area.



- 1 Matt white stainless steel version
- 2 Brushed stainless steel version
- 3 Tileable channel version
- 3 Natural stone support version





AESTHETICS AT THE HIGHEST LEVEL

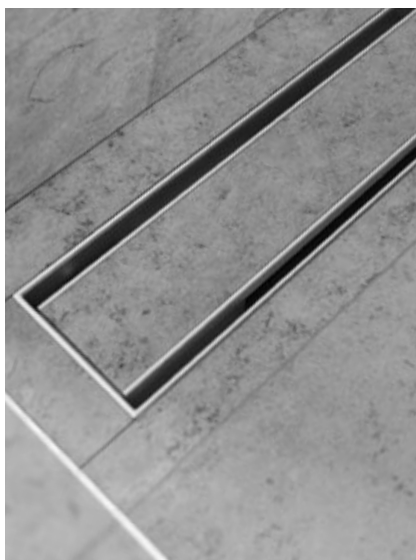
Perfect design impresses through restraint.

DESIGN COVERS

A perfect match for every TECEdrainline shower channel - and in every bathroom: the diverse design covers for shower channels in the TECEdrainline range.



1



Harmonious

Shower drainage that is practically invisible: With the tileable "plate II", the shower channel blends almost seamlessly into the floor covering of the shower and the entire bathroom. Ideally suited for combination with tiles and slab material.

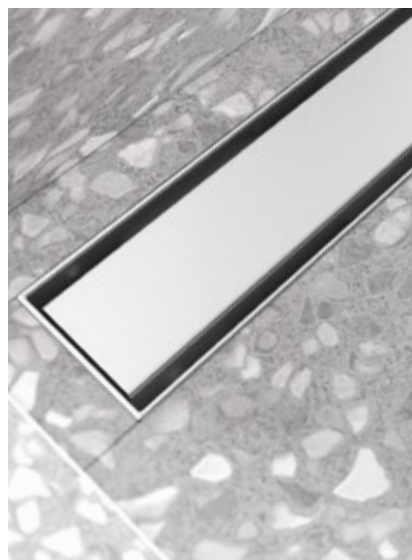
2



Clearly on trend

There is no way around matt white and matt black in modern bathroom design. With shower channel covers made of satined glass or colour-finished stainless steel surfaces, you can skilfully set accents and create a harmonious overall impression with other bathroom elements such as toilet flush plates, washbasins or accessories.

3



Universal

Fits in any bathroom: Design grates made of brushed or polished stainless steel always appear high-quality and impress with their low-maintenance and durable character.

4

Integration in perfection

If only a narrow gap is to be visible, the natural stone version is the perfect choice.

- 1 "Plate II" version
- 2 Satined black glass version
- 3 Stainless steel version
- 4 Natural stone support version

DESIGN COVERS IN A NEW VARIETY

From glass to stone – with TECEdrainline design covers you'll find the right solution for any bathroom.



Brushed "steel II" stainless steel



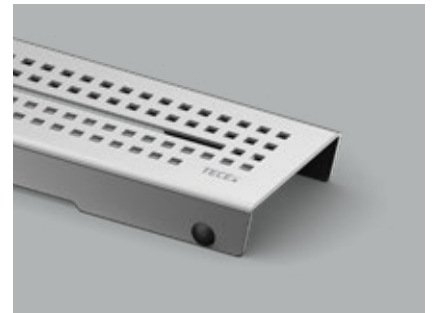
Polished "steel II" stainless steel



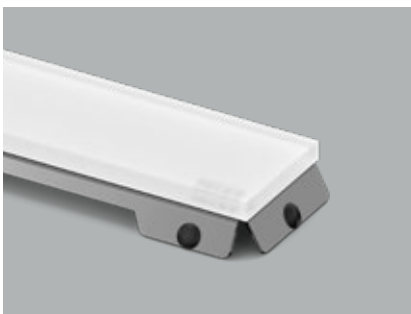
Brushed "basic" stainless steel



Polished "basic" stainless steel



Brushed "quadratum" stainless steel

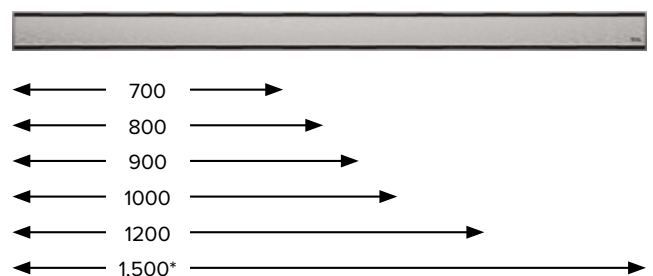


Satined white glass



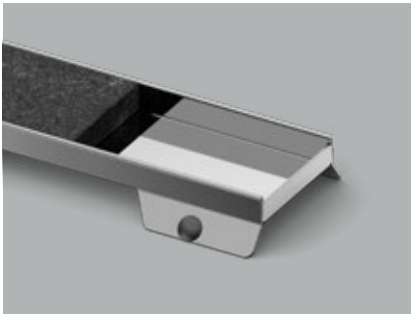
Satined black glass

The channel bodies and design covers for TECEdrainline are available in lengths of 700 to 1,500 mm, for TECEdrainline-Evo in lengths of 700 to 1,200 mm.

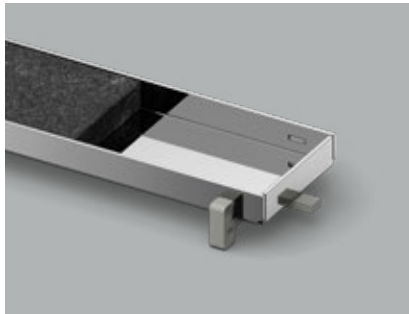


Talent for combination

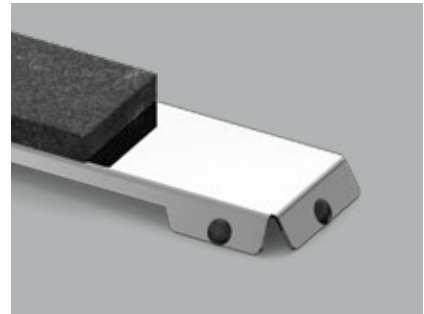
TECEDrainline design covers can be combined with all TECEDrainline and TECEDrainline-Evo drainage channels of the same nominal length. The design cover, drain channel and drain are put together individually and ordered separately.



"Plate II" tileable channel



"Plate" tileable channel



Natural stone support * (can only be combined with the TECEDrainline shower channel)

* TECEDrainline shower channel for natural stone and natural stone support are delivered as a set. The drain is ordered separately.

Elegance in matt

With the new TECEDrainline and TECEDrainline-Evo shower channels, both the channel body and the associated "steel" design grate are colour-coated and therefore blend seamlessly into the shower area.



White matt "steel" stainless steel



Channel body with white matt design grate



Black matt "steel" stainless steel



Channel body with black matt design grate



A modern shower stall with dark grey stone tiles. A glass block wall is on the left, and a large window on the right looks out onto a city. A showerhead and a wall-mounted faucet are visible.

SHINING INSIDE AND OUT

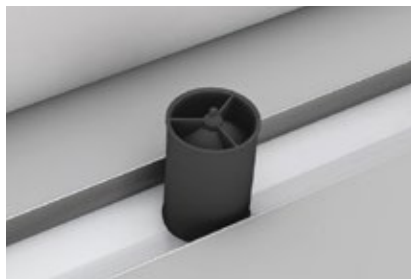
TECEdrainline is also technically
convincing across the board.

HYGIENE AT ITS BEST

Where some shower channels show their unpleasant side, TECEdrainline impresses from the get go: with sparkling cleanliness in no time at all.



Trapped: The hair trap effectively prevents pipelines becoming obstructed by hair.



Innovative against odours: the two-layer membrane odour trap minimises the evaporation of the sealing water in the siphon while acting as a bug barrier at the same time – perfect for showers that are rarely used.



3

Stays clean: the anti-capillary edge prevents the ingress of dirt and soap residues below the tiles.



Hygienically clean: The easy-care stainless steel body is seamless - no annoying undercuts or screws and threaded parts. This means that no hair or dirt can get stuck.

2

Optimal draining: The internal gradient of the channel guarantees perfect water drainage and reduces deposits in the channel body.



TECEdrainline – THE CLASSIC

The original model of the popular shower channel is available as a natural stone channel, as a straight version for installation close to and far from the wall or as a version with a wall upstand for installation flush with the wall. All versions come with an all-round stainless steel flange and Seal System sealing matt for overlapping connection with the composite seal.



TECEdrainline installation
You can find detailed information
about TECEdrainline at
www.tece.com.

» The individual structure of the material is what really makes the character of natural stone bathrooms.

With the right technique, the optical advantages are shown off to its fullest. «

Peter Bruning, natural stone specialist



The advantages at a glance

- Closed, seamless stainless steel body with capillary protection edge
- Assembly with Seal System sealing matt
- Available in a straight version, for natural stone or with wall upstand for installation flush to the wall
- Compatible with all drains and covers in the TECEdrainline system

- 1 TECEdrainline shower channel
2 TECEdrainline shower channel for natural stone
3 TECEdrainline shower channel with wall upstand
4 TECEdrainline shower channel matt white
5 TECEdrainline shower channel matt black

TECEdrainline-Evo

The new generation of the million times tried and tested shower channel from TECE: With factory-fitted Seal System sealing collar and practical construction time protection, it simplifies installation for plumbers and tilers and offers added safety during installation and sealing.



TECEdrainline-Evo installation

You can find more information and a product video about TECEdrainline-Evo at www.tece.com.

One channel for all trades

TECEDrainline-Evo offers the option for anti-backflow drainage without removing the proven anti-capillary edge. TECEDrainline-Evo also facilitates co-operation between the trades: Thanks to the factory fitted Seal System sealing collar in the closed construction time protection, not only an easier installation is guaranteed but also the delivery condition ex works on handover from the installer to the tiler.

DIN
18534

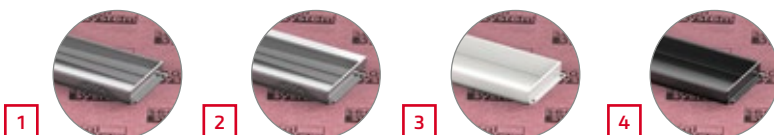
The advantages at a glance

- Complies with DIN EN 1253 and DIN 18534 (applies for all water impact categories)
- Factory fitted Seal System sealing collar: quicker installation, greater reliability, reduced liability risks
- Protection cover for construction against damage and dirt, made of 100% recycled plastic
- Seal of originality for safer trade handover
- With anti-capillary edge and optional secondary drainage – hygienic and protected against backflow
- Compatible with the existing TECEDrainline range

19

Simple installation, tested safety

The protective construction cover (A) simplifies assembly by the installer and, thanks to the undamaged seal of originality (B), guarantees the status at delivery from the factory during handover to the tiler. The tiler benefits from the simple installation of the factory fitted sealing collar (C) and the standard-compliant sealing in the independently tested Seal System.



- 1 TECEDrainline-Evo shower channel
- 2 TECEDrainline-Evo shower channel with wall tile rail
- 3 TECEDrainline-Evo shower channel matt white
- 4 TECEDrainline-Evo shower channel matt black

SECONDARY DRAINAGE, YES, NO OR BOTH?

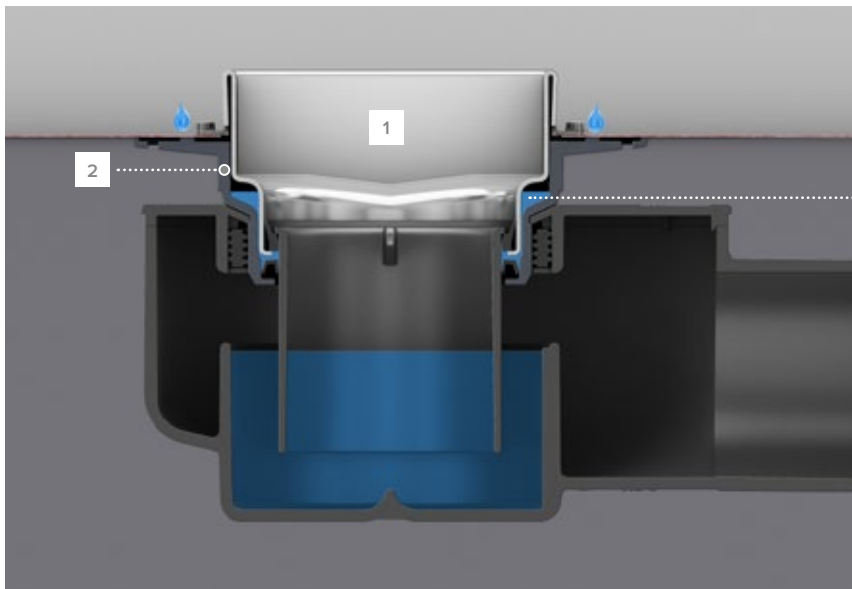
The subject of secondary drainage is being discussed more and more controversially in expert circles. Our view on this has not changed over the years and is underpinned by many years of practical experience in the field of kitchen and industrial channels.

- Only capillary forces prevail in the thin-tile-bed.
Trickles in the direction of the slope are physically impossible.
Studies clearly prove this.
- For hygienic reasons, a drainage channel needs a capillary protection edge to prevent shower water from penetrating under the tile.

In spite of everything, there is still a demand for channels with secondary drainage and with the TECEdrainline-Evo, TECE now offers an option for secondary drainage without removing the proven anti-capillary edge. The result is a shower channel for the highest hygienic demands.

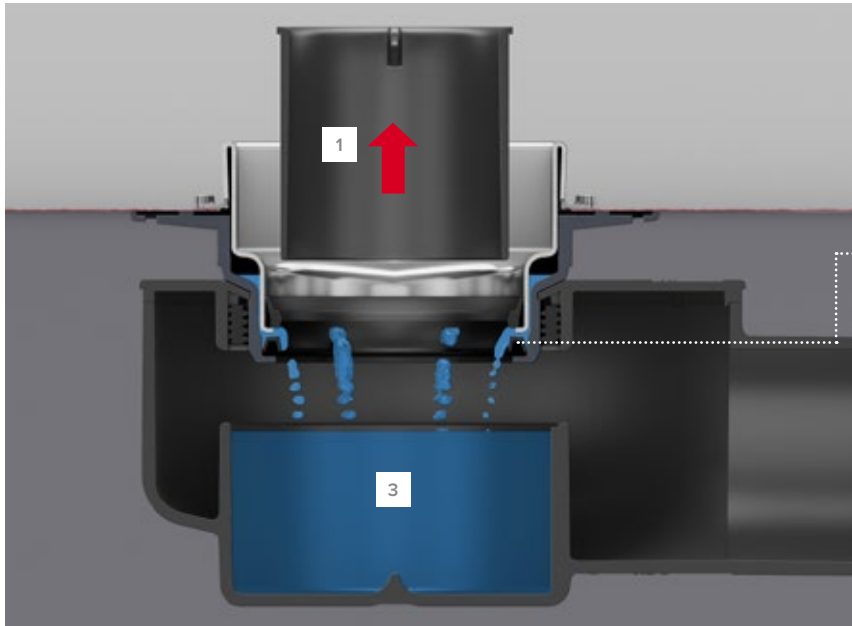


Christian Hügging, TECE Drainage Systems
Product Manager



Trick one: the double base

The stainless steel channel (1) is fixed in a hard shell (2). Water (3) would collect in the hard shell beneath the stainless steel channel without backflow.



Trick two: the double seal

When removing the dip rod, (1) the openings (2) in the specially constructed double-lip seal are released. If water collects here, it could flow into the drain trap (3).



The anti-capillary edge

The channel body also stays thoroughly closed! Dirt and soap residues can't get beneath the tiles. As a result, TECE remains true to itself and the principle of the anti-capillary edge.



Seal System – tested composite seal

The TECEdrainline channel, Seal System sealing collar and countless sealing products were tested together by the independent testing institute Kiwa TBU. With Seal System, TECEdrainline offers installers and tilers proven safety when joining composite seals to TECEdrainline shower channels.

The tests were carried out in accordance with the test principles applicable in Germany. In the process, numerous sealing products from well-known manufacturers were tested for tightness in conjunction with the Seal System sealing collar, as was the connection between this and the channel body, over a period of 28 days using a 20 cm high water column.

You can also find information on Seal System online at www.sealsystem.net.

TECEdrainline MODULAR SYSTEM

In the modular system, the optimum shower solution for any shower area is quickly combined.

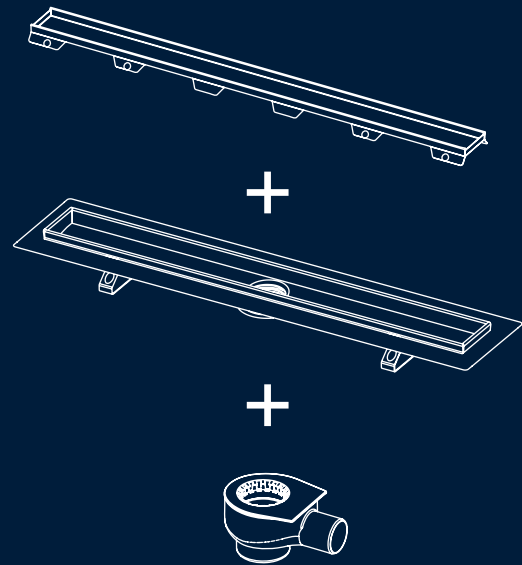
So easy. So good.

Modern drainage works reliably – without putting itself at the forefront. TECEdrainline therefore offers a wide range of different covers in a modular system that integrate into any shower area almost seamlessly. And a wide range of channel bodies that make installation fast, secure and reliable at any point in the shower area.

TECEdrainline total package

A TECEdrainline shower channel always consists of:

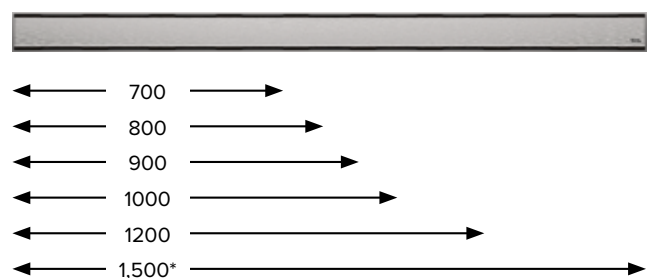
- A A cover
- B A channel
- C A drain



Personal bathroom design means that individual solutions need to be achieved. TECE therefore offers a wide range of lengths for its shower channels.

All TECEdrainline design covers can be combined with all TECEdrainline channels and are available in lengths from 700 – 1,500 mm*.

* TECEdrainline-Evo is available in lengths from 700 mm to 1,200 mm.



A Cover



Design covers for TECEdrainline are available as a stainless steel design grate in various versions, in glass and as supports for tiles and natural stone*.

For more information see page 10.

*TECEdrainline channel and cover for natural stone come as a set.

B Channel

TECEdrainline

with stainless steel flange and Seal System sealing matt.

For more information see page 16.



TECEdrainline-Evo

with factory fitted sealing collar in a closed protective construction cover.

For more information see page 18.



C Drain



Drains for TECEdrainline shower channels are available in four heights from 53 to 133 mm and as a vertical drain. All drains can be freely combined with all TECEdrainline channels according to the necessary drainage capacity and available installation height.

For more information see page 26.



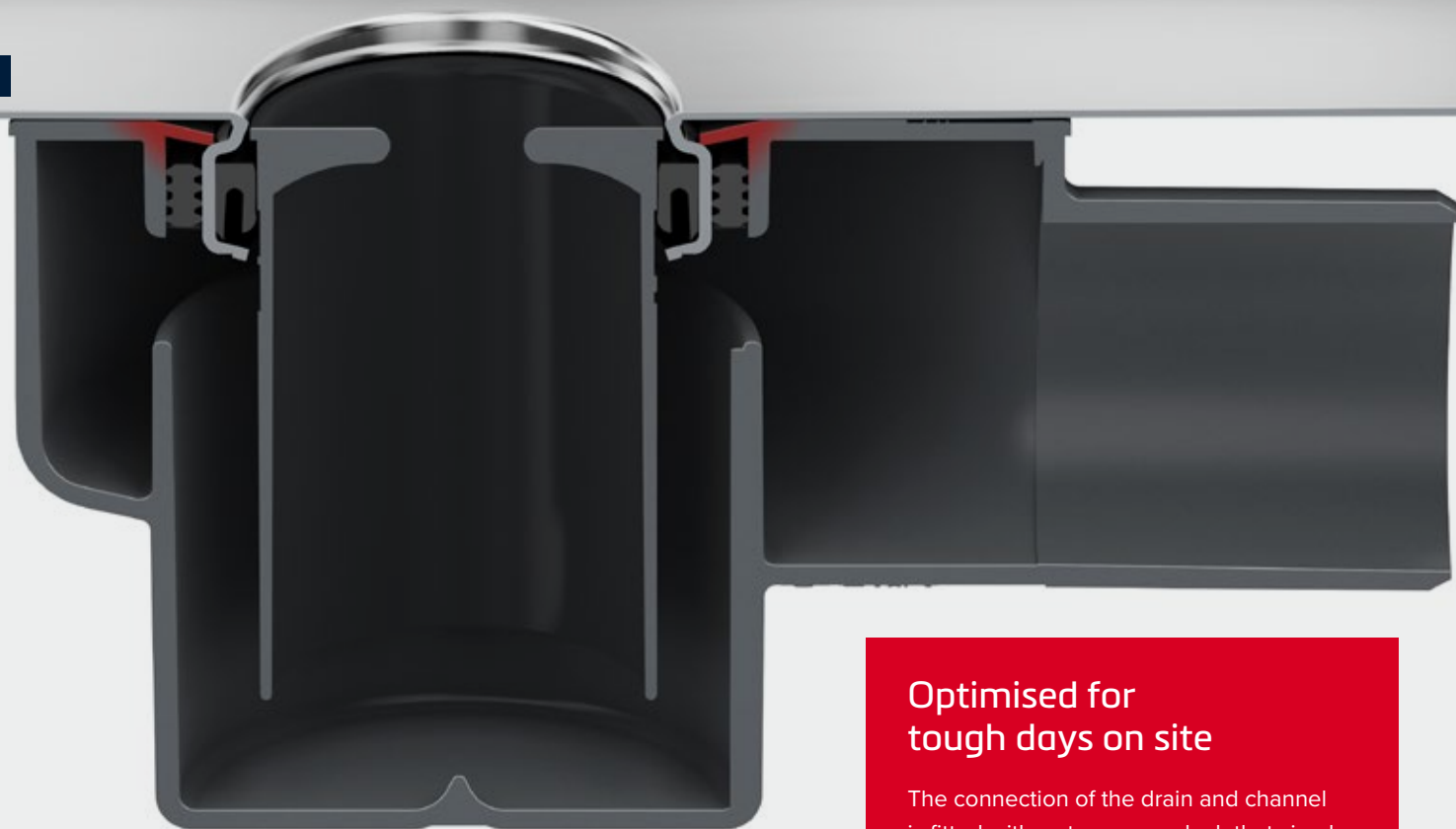
Technical Information can be found in our product database at:
https://produktDaten.tece.de/web/tece_EN/en/index.xhtml

Matching accessories can be found on page 27.

DRAINS AND ACCESSORIES

Flexible, hygienic, reliable: right up to the drain, TECEdrainline offers details that make the tried and tested shower channel particularly attractive for installers and customers.

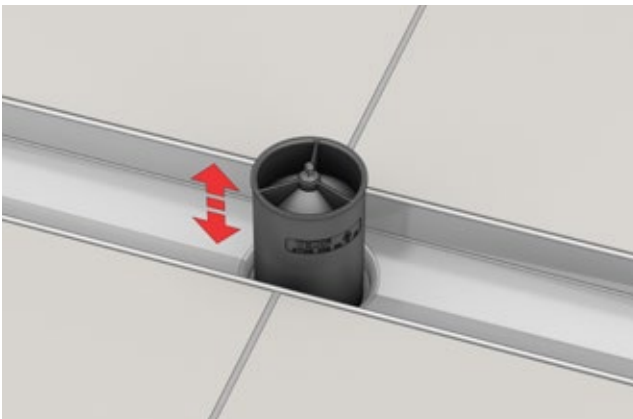
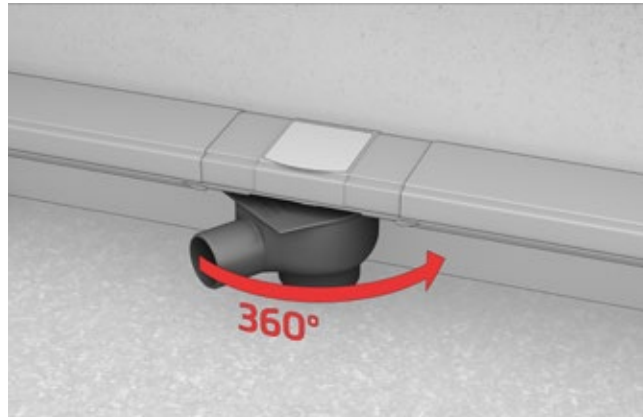
24



Optimised for tough days on site

The connection of the drain and channel is fitted with a strong snap lock that simply snaps shut when attached. Creates a sealed and secure connection. However, the drain can still be rotated.

Flexible all-round: TECEdrainline drains can rotate 360° for particularly easy connection to the drain line.



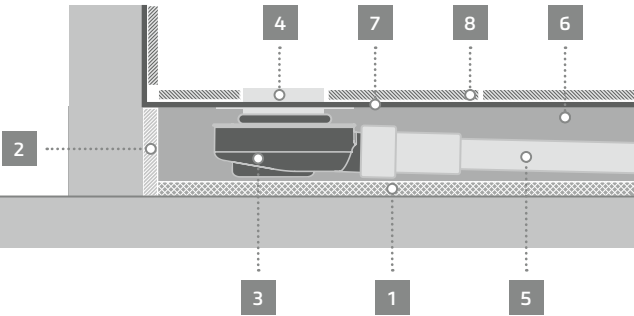
Twice as safe against odours: the retrofittable membrane odour trap for TECEdrainline drains together with the sealing water ensures a dual siphon effect. It minimises the evaporation of sealing water via its membrane and locks out vermin – especially suitable for rarely used showers.

Easy to clean: When it comes to stubborn blockages, the drain line can be cleaned with a small pipe cleaner. A marking on the inside shows the location of the drain nozzle for this purpose.



TECEdrainline DRAINS

Always the right drain – for every
TECEdrainline shower channel.



- 1

Sound decoupling, insulation
- 2

Edge insulation strips
- 3

Drain pot
- 4

Shower channel
- 5

Drain pipe
- 6

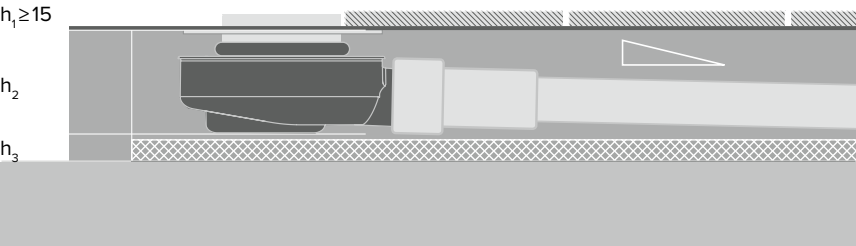
Screed
- 7

Combined sealing
- 8

Thin-bed tiling

Drain as required

TECEdrainline drains are available in four variants for lateral connection as well as for vertical connection to the sewer line. The drain trap is selected according to the required drainage capacity and the available floor installation height. The height for the floor insulation and the sewer line gradient should also be considered when making a selection.



- h_1

Height of anti-capillary edge (15 mm) and floor covering (including sealing and tile adhesive)
- h_2

Height of drain includes shower channel, up to screed upper edge
- h_3

Height for sound insulation or proofing and drain pipe gradient

Drain	h_2^* [mm]	Performance** [l/s]
extra flat	53	0.5/0.6
Flat	80	0.7/0.8
Standard	105	0.7/0.9
max.	133	1.1/1.4
Vertical	52	1.2/1.3

* When using the TECEdrainline-Evo shower channel height $h_2 + 2$ mm respectively
** Depending on the design grate and 10/20 mm build-up height



TECEdrainline “extra-flat” drain, DN 40, side drain
for rotatable assembly with the channel body, with removable siphon immersion pipe

TECEdrainline “flat” drain , DN 50, side drain
Drain rotates 360°, with removable siphon immersion pipe

TECEdrainline “standard” drain, DN 50, side drain
Drain rotates 360°, with removable siphon immersion pipe

TECEdrainline “max” drain, DN 70 side drain
Drain rotates 360°, with removable siphon immersion pipe

TECEdrainline “vertical” drain, DN 50
Drain rotates 360°, with removable siphon immersion pipe

TECEdrainline ACCESSORIES

The TECEdrainline range offers a wide selection of accessories for easy assembly and functional enhancement.



Assembly feet

Assembly feet for easy height adjustment and position fixing of the channel body during shell installation. Available in the heights 94 to 142 mm and 139 to 182 mm.



Membrane odour trap

Plastic immersion pipe with inner sealing lip membrane as protection against evaporation, barrier against odour and vermin.



FireStop fire protection set

For direct assembly on the TECEdrainline DN 50 vertical drain, for highly fire resistant partitioning of ceiling bushings in solid ceilings.



Hair trap

Hair trap made of stainless steel, for fitting into the TECEdrainline channel body.



Drainbase sound insulation mat

Sound insulation mat for assembly under floating screed in the area of floor-level showers or throughout the bathroom. To reduce installation noise and impact noise insulation for renovations and new constructions.



TECEdrainline-Evo wall bracket

With the wall mounting bracket, the shower channel can be fixed directly to the wall and perfectly levelled.

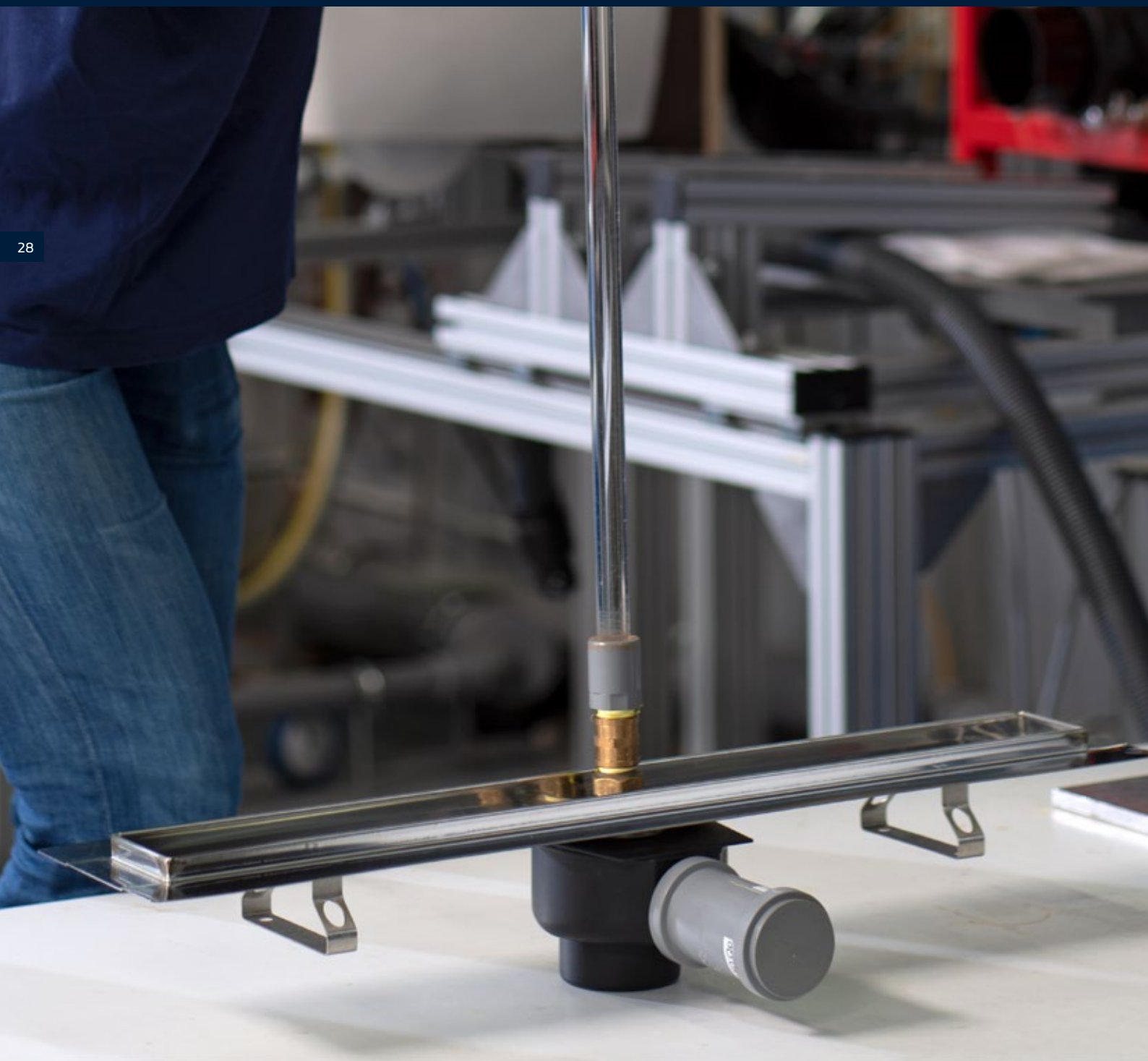


TECEdrainline-Evo levelling points

Levelling points (left and right) for clipping and for forming a wider screed edge for simplified levelling.

DRAINAGE WITHOUT COMPROMISE

Attractive, hygienic, reliable – everything considered
from the design to the sealing.



SIMPLY STANDARD-COMPLIANT!

Illustration	Product	Water impact classes of DIN 18534		
		W1-I	W2-I	W3-I
	TECEdrainline-Evo with factory fitted sealing collar (100 mm)	✓	✓	✓
	TECEdrainline with stainless steel flange (30 mm) and Seal System sealing matt	✓	✓	

Meeting standards - during production and in the application

As one of the leading German manufacturers of floor-level shower systems, compliance with the relevant standards is a significant feature of our service commitment. Naturally, TECE offers standard-compliant products in all areas of drainage systems. Compliance with the standard relates not only to the sealing technology, but also requirements from product standard DIN EN 1253 and fire protection and sound insulation requirements.



Type testing and external monitoring

Key products from the TECEdrainline range have been tested by TÜV Rheinland and their conformity to EN 1253-1:2015 has been confirmed. The production of these products is monitored annually.

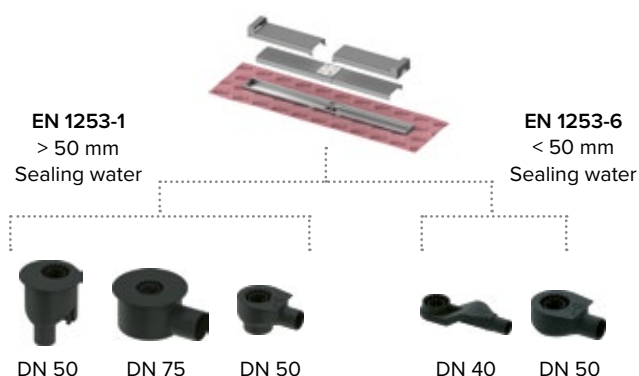


Bauart geprüft
und überwacht



www.tuv.com
ID 1111219252

An overview of all externally monitored articles can be found at certipedia.com under number R 6014090.



In brief

- TECEdrainline meets the requirements of DIN 18534.
- TECEdrainline meets the requirements of DIN EN 1253 and is monitored by TÜV Rheinland.



The product and testing standard DIN EN 1253 and application standard DIN 18534 are of particular importance to the shower drainage sector. For more information, visit www.tece.com/en/drainage-systems

EN
1253

DIN
18534

SEAL SYSTEM – COMPOSITE SEAL, INDEPENDENTLY TESTED

No more time-consuming research. With Seal System, fitters and tilers have guaranteed safety when connecting bonded waterproofing to shower channels and point drains.

»I want to use the sealants I've always used. What's the point if a manufacturer has only tested a product that I cannot get here?«



Seal System – tested for practical application

The market offers a wide range of sealing products that vary regionally or simply according to the preferences of the processor. The problem is that the relevant combination of drainage product and composite seal is often not tested. And that's exactly where Seal System comes in. As part of an extensive combination test of TECE drainage products and numerous composite sealing products, a testing institute was commissioned to carry out a leak test.

Planners and processors now have tested security and almost 'free choice' when it comes to composite seals. Practise-oriented: a list of the successfully tested sealing products is supplied with the drainage products. In addition, the tested composite seal products for each product line are summarised in a test certificate and are available on the TECE homepage.

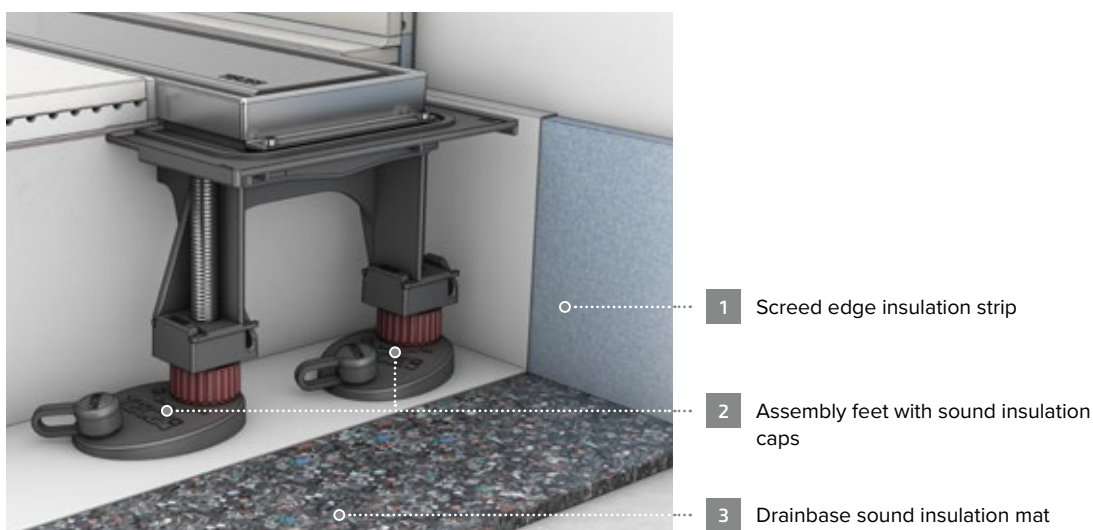


You can also find information on Seal System, tested sealing products and test certificates online at www.sealsystem.net.

SAFE AND QUIET - WITHOUT EXCEPTION

Tested sound insulation with Drainbase sound insulation mat

Although just 6 mm thick, the Drainbase sound insulation mat makes it possible to fulfil the enhanced sound insulation requirements stipulated by DIN 4109 and VDI 4100 (SSt III). The mat is laid below the screed in the shower area or in the entire bathroom. With Drainbase, the compression is just 0.6 mm at a load of 15 t/m². As a result, the usual screed settlement can be kept to a minimum. The Drainbase sound insulation mat is therefore also ideal for renovations.



31



Reliable, simple, fast – the Firestop fire protection set

The FireStop EI 120-U/C fire protection sets are innovative and safe solutions for the vertical drains of TECEdrainprofile, TECEdrainline and TECEdrainpoint S. The fire protection sleeve is simply screwed on from below, eliminating the need for the usual filling of the hole. The set has been tested, approved throughout the EU (ETA) and a general type approval (aBG) has been applied for.



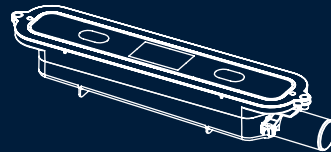
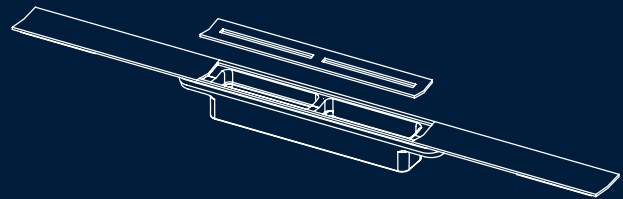
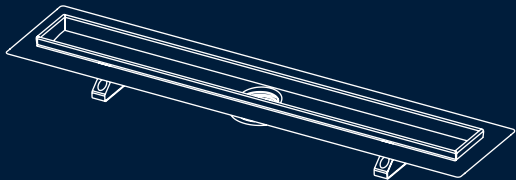
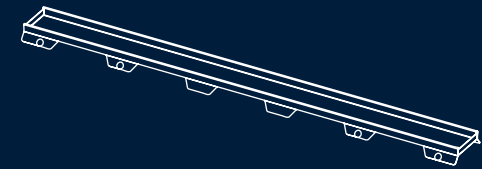
In the event of fire, the intumescent material of the fire protection sleeve expands and closes the drain, safely protecting it from fire and smoke.

TECE DRAINAGE SOLUTIONS

Looks good, says the client. It fits, we say.
Thanks to the wide range of combinations of covers,
drain tops and drains in the TECE modular system.

TECEdrainline

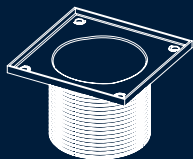
TECEdrainprofile



Individually combined: the TECEdrainline shower channel consists of a channel body in various versions, a glass or stainless steel cover or a carrier and a channel for natural stone or tiles and one of five drains. All of these items can be ordered separately and are freely combinable with each other.

One length-adjustable shower profile and one of three drains: done. The range of TECEdrainprofile shower channels is small, but thanks to individual cutting to length and setting up in the shower area, it is still suitable for every installation situation. The stainless steel channels are available in five different lengths and five current colour variations in a choice of brushed or polished look.

TECEdrainpoint S



The TECEdrainpoint S point drain can be freely assembled using a design grate or tileable channel, a matching drain and a drain top with a grate frame. Practical when things need to happen quickly: the TECEdrainpoint S complete sets for the most common point drain combinations.

Always the right solution

Tastes differ – just like the structural requirements that drainage systems have to meet. That's why TECE offers a wide range of drainage solutions



Discover more drainage products now at www.tece.com

For more information visit
www.tece.com

TECE SE
International Business
T +49 2572 928-999
international-business@tece.de
www.tece.com/en

TECE Limited
T +44 17 61 24 11 33
info@tece.co.uk
www.tece.co.uk

Appearance and texture may vary depending on material, manufacturing process and lighting conditions.
In order to improve the flow of reading, no distinction is made between feminine, masculine and non-binary in gender-related expressions. However, all genders are always implied.