



TECEone Shower WC – Hot and Cold Feed

Article Number: 9700200

Description:

The electricity free TECEone wall hung shower toilet has been designed and function with all TECE frames. With a rimless design, built to work with all frame sizes and with flush volumes of 4.5 or 6 litres making it the perfect product for the eco-conscious. Thermostatically controlled shower function with both hot and cold water feeds, means no electrical supply is required, and allows for continuous temperature adjustment between 10 and 38°C. **E&OE**

Applications:

TECEone wall hung shower WC pans are designed to fit onto WC frames, fitted into en-suites, cloakrooms and other bathroom projects where wall hung shower WC pans are required. Suitable for:

- Small and large bathrooms, where space is at a premium, while ease of cleaning and sleek design is a priority.
- All major manufacturers WC frames with 180mm pan fixing centres.
- Installations where cold-water feeds are available, but not electric supply.
- Premium design-led bathroom installations, where aesthetic considerations require sleek product solutions.
- Can be fitted for comfort height installations providing the frame can be adjusted to suit to finish
- Can be used with 'grey' rainwater recycling systems when adequately filtered

Product characteristics and key features:

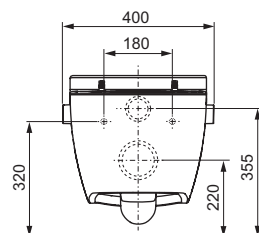
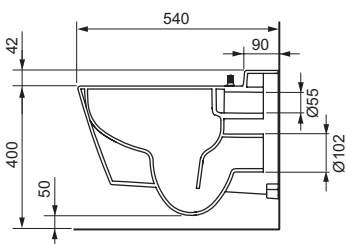
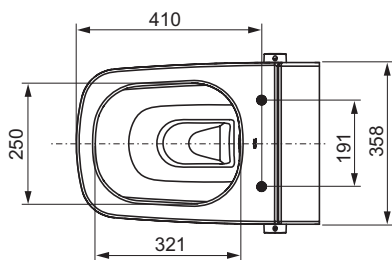
- Manual Controls: Continuously adjust the water temperature between 10 and 38°C, using rotary control.
- Increase or decrease water pressure on shower nozzle up to 5.6 lpm, using rotary control on opposing side to temp control.
- Type AD backflow prevention device on shower function water supplies, protecting against Cat 5 contaminants to suit regulations.
- Replicable self-cleaning shower nozzle.
- Minimum feed pressure for shower function of 1.5 bar (max. 10 bar).
- Manufactured in accordance with EN997 of water supplies.
- Suitable for TECE WC cistern frame ranges.
- Hygienic ceramic design with fewer corners, edges, or joins.
- 4.5 and 6 litre flush volume compatible.
- Braided stainless-steel cold and hot water feed pipes.
- Integral concealed pan hanging locations.
- Hard Mounted seat locations to suit TECE seats with lids to speed up installation and reduced costs (seat sold separately – see pricelist).
- No electrical supply is required.

TECE Ltd. data sheet

Status as of 16/06/2025

Technical Data:

SIZE , Height x Width x Depth:	400 x 400 x 540mm
PRESSURE , Minimum Shower Feed:	1.5 bar (Max. 10 bar)
PRESSURE , Rotary Control:	Increase or decrease water pressure on shower nozzle using rotary control up to 5.6 lpm
TEMPERATURE , Rotary Control:	adjust the water temperature between 10 and 38°C, using rotary control.



Specification clause:

The electricity free TECEone rimless ceramic wall-hung shower WC pan features 4.5-6L flush volumes, manually controlled thermostatic shower functionality (10°C–38°C) with 5.6 lpm flow, pre-assembled seat fixings for easy installation and cost reduction, compatibility with 180mm pan fixing centres, Type AD nozzle, suitable for 1.5-10 bar water pressure and certified to EN997 standards.

Contents:

Supplied in Single BOX (N.B. order control plates separately)

- TECEone rimless wall hung WC pan.
- Pre-assembled fastening locations for toilet seat.
- Thermostatic and water pressure controls pre-fitted.
- Self-cleaning shower nozzle pre-fitted.
- Installation guides.

Please order separately:

- TECE toilet seat with CLASSIC lid (Item No. 9700600).
- TECE toilet seat with SLIM lid (Item No. 9700603).
- Shower Toilet/Seat Connection Set (Refer to Product List).

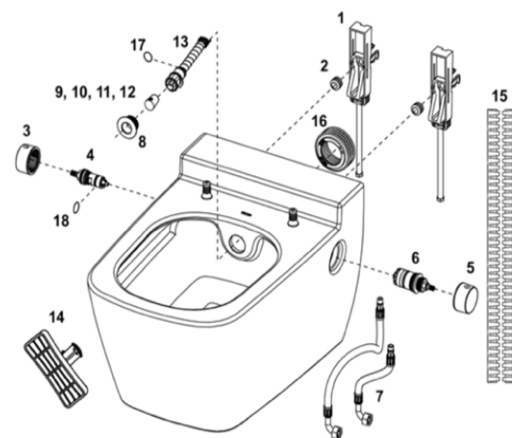
Packaging:

- Single items, Heavy Duty Box: Size (W x H x D): 425 x 460 x 590mm.
- Disposal: According to local Bylaws.
- Ready to install, factory sealed.

Installation Instructions:

- See separate sheet: Included in package.

Spare Parts:



No.	Article No.	Spare Parts
1	9820356	Concealed mounting
2	9820357	Knurled nut (2x) for concealed mounting
3	9820362	Control knob for water volume, plastic white
4	9820469	Ceramic cartridge including EN 1717 safeguard
5	9820361	Control knob temperature, plastic white
6	9820360	Thermostatic cartridge
7	9820471	Reinforced hoses
8	9820364	Rosette, white
9	9820403	Shower nozzle cap (3 x) "standard" 75', white
10	9820404	Shower nozzle cap (3x) "standard" 90' white
11	9820405	Shower nozzle cap (3x) "medium" 90' White
12	9820406	Shower nozzle cap (3x) "small" 90' White
13	9820363	TECE shower arm complete set, white,
14	9820422	Removal tool shower arm
15	9820351	Sound insulation tape
16	9820484	Seal for flush pipe connection
17	9820585	O-ring for shower arm spring retainer
18	9820586	O-ring for safety device EN 1717

E&OE

We reserve the right to alter and amend specifications without prior notice. This is not a specification document and does not guarantee performance.

SPARES AND REPAIRS

We guarantee that spare parts will be available for all cisterns, frames and pans for at least 25 years after cease of manufacture.