



## TECEneo Shower WC – Hot and Cold Feed

Article Number: 9700205

---

### Description:

Water-saving, rimless toilet ceramic with integrated shower function for comfortable personal cleaning using water. Shower function without electricity via mains fed hot and cold-water connection, wall hung wc ceramic for in-wall cistern, simple installation or retrofitting.

### Applications:

TECEneo wall hung shower WC pans are designed to fit onto WC frames, fitted into en-suites, cloakrooms & other bathroom projects where wall hung shower WC pans are required. Suitable for:

- Small and large bathrooms, where space is at a premium, while ease of cleaning & sleek design is a priority.
- All major manufacturers WC frames with 180mm pan fixing centres.
- Installations where cold-water feeds are available, but not electric supply.
- Premium design-led bathroom installations, where aesthetic considerations require sleek product solutions.
- Can be fitted for comfort height installations providing the frame can be adjusted to suit to finish.
- Can be used with 'grey' rainwater recycling systems when adequately filtered.

### Product characteristics & key features:

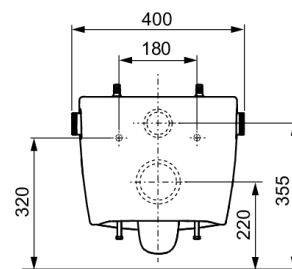
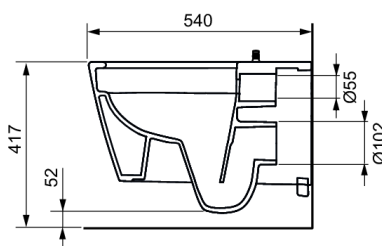
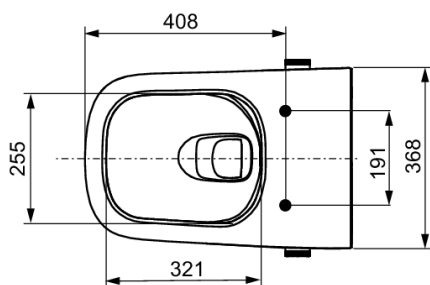
- Intuitive operation via side rotary knobs for water temperature and water volume
- Shower jet continuously adjustable up to 5.6 litres/min.
- Individually adjustable water temperature (max. 38 °C).
- Replaceable shower arm caps.
- Approval according to EN 1717.
- Minimum flow pressure 1.5 bar (max. 10 bar).
- Function via water pressure - no electrical connection required.
- Wall-hung washdown toilet for 4.5 and 6 litre flush volumes.
- Cyclone flush technology (thorough and quiet flushing).
- Cera clean technology (special surface coating for easy cleaning).
- Compact design - projection 540 mm, width 367 mm.
- Concealed wall attachment and concealed water connections.
- Rimless ceramic with integrated splash guard.
- Pre-fix technology: factory-moulded toilet seat attachment for a wobble-free seat and lid (compatible with all TECE shower toilet seats).
- Material: White ceramic.
- Hygiene-optimised ceramic design.
- EN 997 Certified.

# TECE Ltd. data sheet

Status as of 16/06/2025

## Technical Data:

**SIZE**, Height x Width x Depth: 365 x 368 x 540  
**PRESSURE**, Minimum Shower Feed: 1.5 bar (Max. 10 bar)  
**PRESSURE**, Rotary Control: Increase or decrease water pressure on shower nozzle using rotary control up to 5.6 lpm



## Specification clause:

TECEneo rimless ceramic wall-hung shower WC pan is compatible with all major WC frames and certified to EN997 standards. It features a hygienic ceramic design for 4.5 to 6-litre flush volumes and water pressure up to 5.6 lpm via rotary controls. With pre-assembled seat fastenings, it is easy to install and suitable with **all** major manufacturers WC frames with 180mm pan fixing centres. Minimum water pressure is 1.5 bar, maximum 10 bar. Also featuring a Type AD backflow prevention device and self-cleaning nozzle.

## Contents:

Supplied in Single BOX (N.B. order control plates separately).

- TECEno rimless wall hung WC pan.
- Pre-assembled fastening locations for toilet seat.
- Thermostatic and water pressure controls pre-fitted.
- Self-cleaning shower nozzle installation tool.
- Installation guides.
- Cleaning Box.
- Device for descaling unit.
- Sound insulation.

## Please order separately:

- TECE toilet seat with CLASSIC lid (Item No. 9700600).
- TECE toilet seat with SLIM lid (Item No. 9700603).
- Shower Toilet/Seat Connection Set (Refer to Product List).

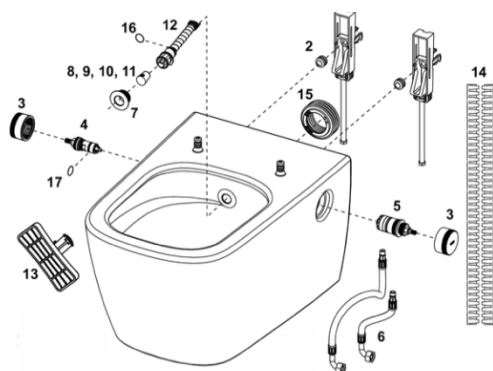
## Packaging:

- Single items, Heavy Duty Box: Size (W x H x D): 430 x 460 x 590mm.
- Disposal: According to local Bylaws.
- Ready to install, factory sealed.

## Installation Instructions:

- See separate sheet: Included in package.

## Spare Parts:



No.	Article No.
1	9820356
2	9820357
3	9820362
4	9820469
5	9820360
6	9820471 (from 2021)
7	9820364
8	9820403
9	9820404
10	9820405
11	9820406
12	9820363
13	9820422
14	9820351
15	9820484
16	9820585
17	9820586

### Spare Parts

Concealed mounting  
Knurled nut (2x) for concealed mounting  
Control knob for water volume, plastic white  
Ceramic cartridge including EN 1717 safeguard  
Thermostatic cartridge  
Reinforced hoses  
Rosette, white  
Shower nozzle cap (3 x) "standard" 75' white  
Shower nozzle cap (3x) "standard" 90' white  
Shower nozzle cap (3x) "medium" 90' White  
Shower nozzle cap (3x) "small" 90' White  
TECE shower arm complete set, white,  
Removal tool shower arm  
Sound insulation tape  
Seal for flush pipe connection  
O-ring for shower arm spring retainer  
O-ring for safety device EN 1717

## E&OE

We reserve the right to alter and amend specifications without prior notice. This is not a specification document and does not guarantee performance.

## SPARES AND REPAIRS

We guarantee that spare parts will be available for all cisterns and frames for at least 25 years.