



TECE

FLEXIBILITY AT ITS BEST

TECEfloor Soft-PERT 5S - impressively flexible

Pipe systems

close to you

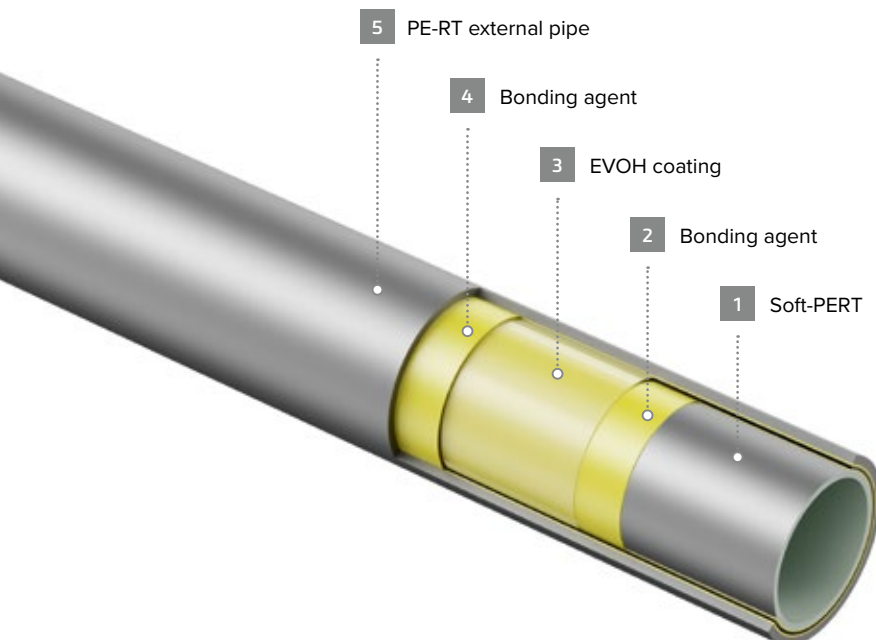
INFINITELY FLEXIBLE WITH 1A CURVE POSITION

When laying underfloor heating pipes, twists and tensions often occur due to restoring forces. As a result, coils unwind from the roll dispenser and installation panels rise in the corners. The new TECEfloor Soft-PERT 5S pipe with optimised layer structure puts an end to these problems. Soft as butter and at the same time pressure-resistant, it performs impressively on the construction site and in the laboratory.

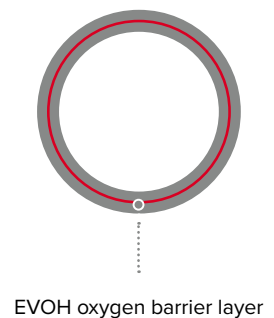


Highly flexible and yet stable

The new TECEfloor Soft-PERT 5S uses a particularly soft polyethylene with high temperature resistance, making the pipe extremely flexible. The optimised position of the oxygen barrier layer favours flexibility.



Cross-section of a TECEfloor PE-RT-5S pipe with protected EVOH oxygen barrier layer.

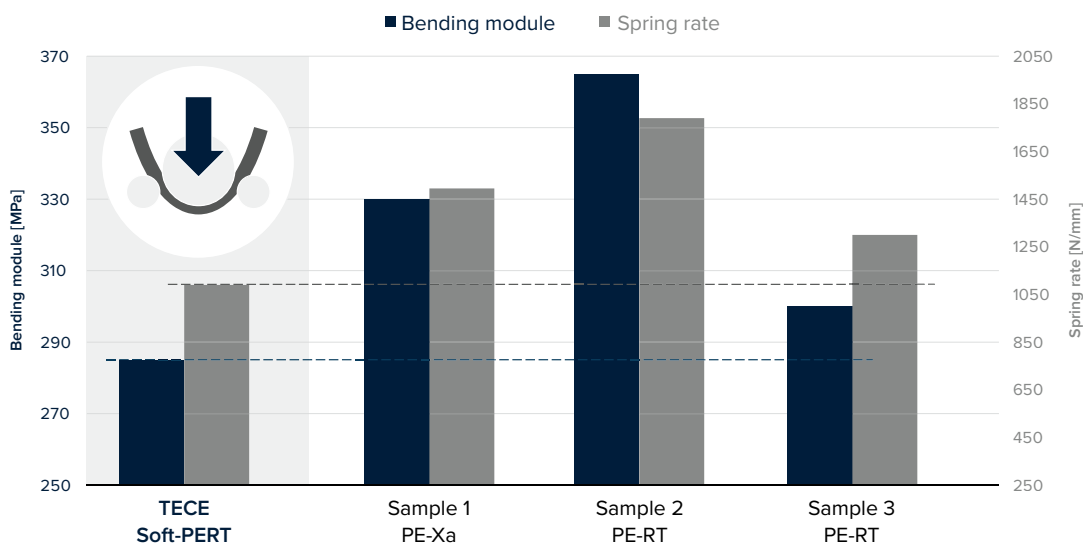




Convincing not only in the laboratory

TECE has tested a wide variety of materials and pipe constructions for flexibility in its in-house pipe laboratory and analysed them in creep tests. The result is a highly flexible PE-RT pipe made from a special PE-RT material. Its properties are impressive: the five-layer TECEfloor Soft-PERT 5S pipe shows significantly better values than comparative samples in both the bending module and the spring rate. The bending module provides information about the material properties, while the spring rate also takes into account the pipe geometry and the layer structure.

Strong in the comparative test



In order to objectively assess the flexibility, the bending modulus and spring rate were determined for various pipe samples. The new TECEfloor Soft-PERT 5S pipe offers outstanding values.

Naturally standard-compliant

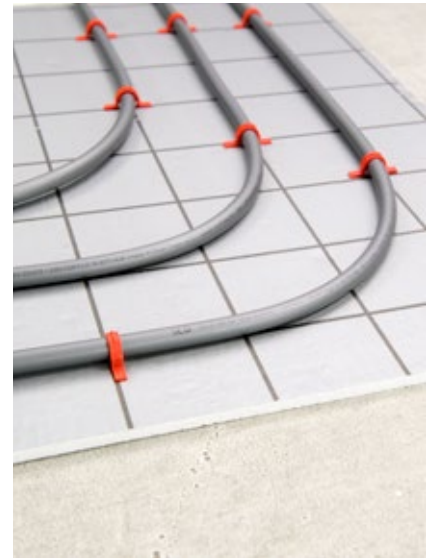
Naturally, the TECEfloor Soft-PERT 5S pipe complies with DIN EN 21003 as well as the standard for oxygen diffusion tightness in accordance with DIN 4726. The five-layer technology protects the EVOH oxygen barrier layer against external mechanical influences.



FLEXIBLE WHEN IT MATTERS!

Installed with ease on thin surfaces

Thin mounting systems are becoming increasingly popular, and not just in renovation projects. Pipes laid with twists and tensions cause system panels to bulge in the surface and the corners can rise at the edges. The flexibility of the new TECEfloor Soft-PERT pipe eases the situation.



TECEfloor tackler panel 10plus

When things get rough on the construction site

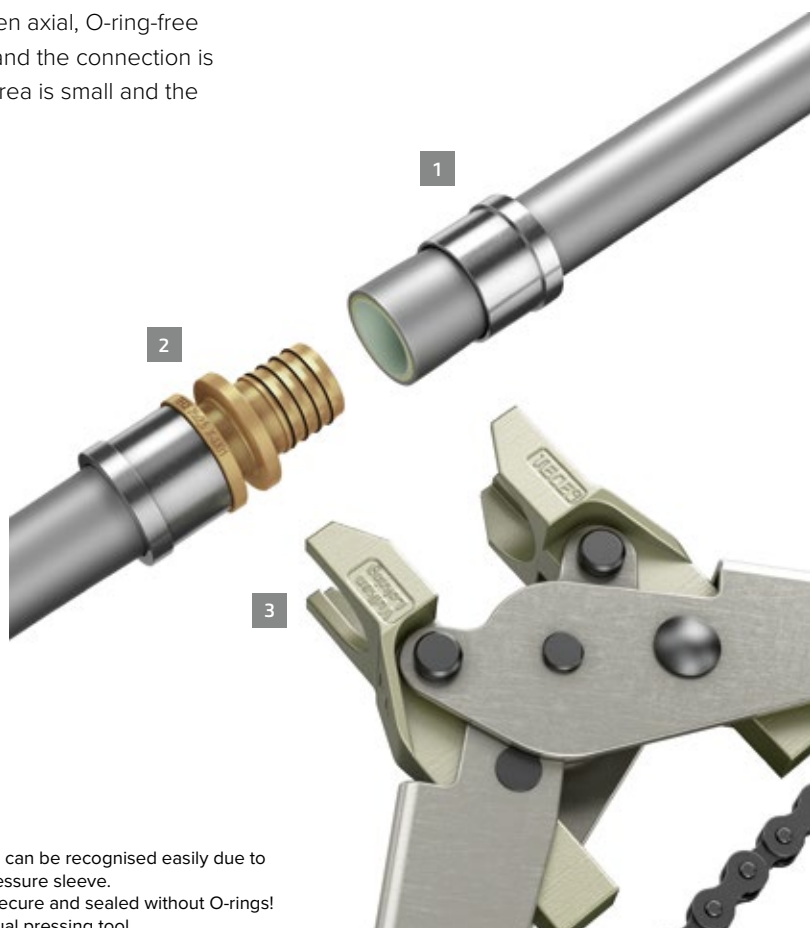
In industrial or open-space heating systems, the pipe dimensions are larger and the ambient temperatures are often somewhat colder than in closed shell construction. The advantageous material properties of the TECEfloor Soft-PERT pipe are particularly impressive here. In addition, the outer layer of a pipe can quickly be damaged by scratches and abrasion in the rough and tumble of everyday construction site life, particularly where large surfaces are laid. With the TECEfloor five-layer pipe, the sensitive EVOH oxygen barrier layer is therefore in the middle and hence optimally protected against external influences.



SECURE CONNECTION

Simply press axially!

More than 30 years of reliability: The TECE sliding sleeve technology. All dimensions of the TECEfloor five-layer pipes can be achieved with the proven axial, O-ring-free TECEflex sliding sleeve system. Cut to length, expand, press – and the connection is ready. By expanding the pipe the narrowing in the connection area is small and the pressure losses remain minimal.



- 1 Unpressed connections can be recognised easily due to the loosely attached pressure sleeve.
- 2 Pressed connection – secure and sealed without O-rings!
- 3 Maintenance-free, manual pressing tool



FLEXIBILITY CONTINUES

Simply plug instead of screw - the TECEfloor push-fit manifold for DIM 16

Pre-assembled push-in fittings allow for quick and twist-free connection. The push-fit connection can be loosened again later with a special key and the fitting can then be used again.



It's that easy:
Experience the
Logo manifold type
in the video.

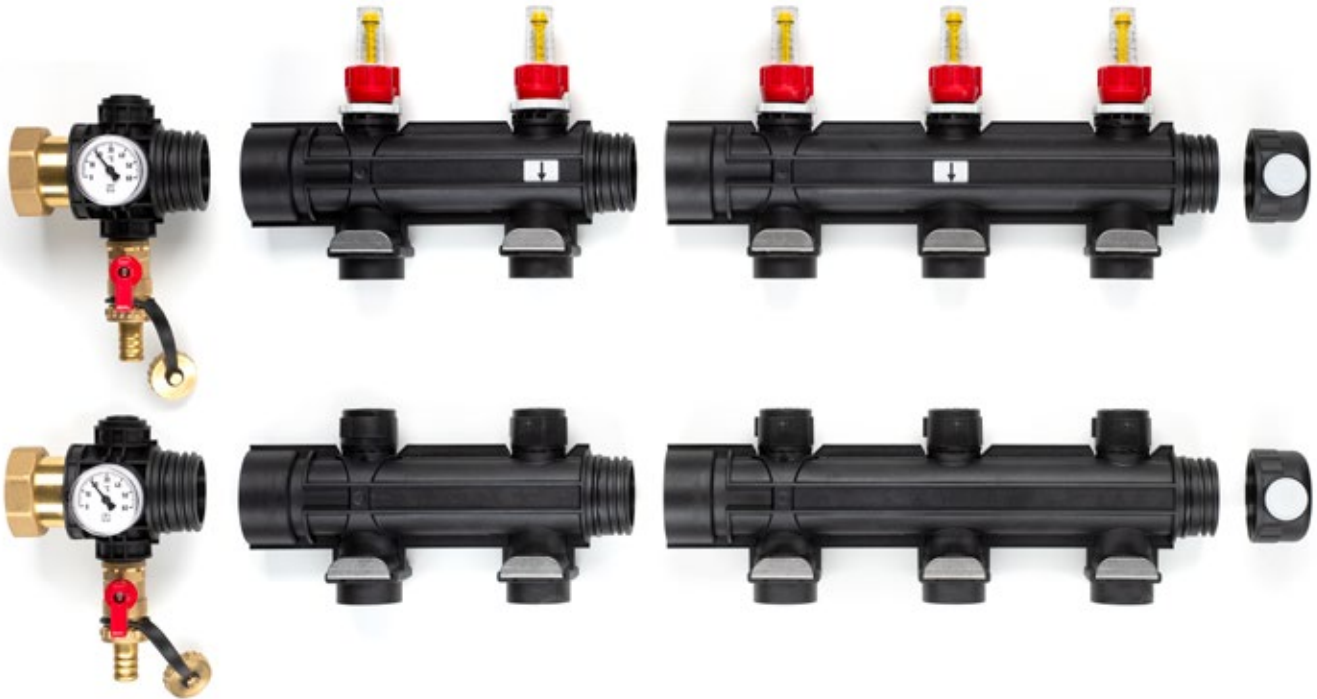


Product highlights

- Twist-free push-fit connection with TECElogo-Push connections
- Sight glasses can be exchanged under system pressure, default settings are retained
- Each manifold is 100% tested for leaks and functionality
- Version with TECElogo-Push or Eurocone connection

Clever combination, secure connection - the TECEfloor industrial manifold for DIM 25


Quickly and securely connected with two turns: The modules of the TECEfloor industry heating circuit manifold can be used to create manifolds with up to 20 heating circuits.

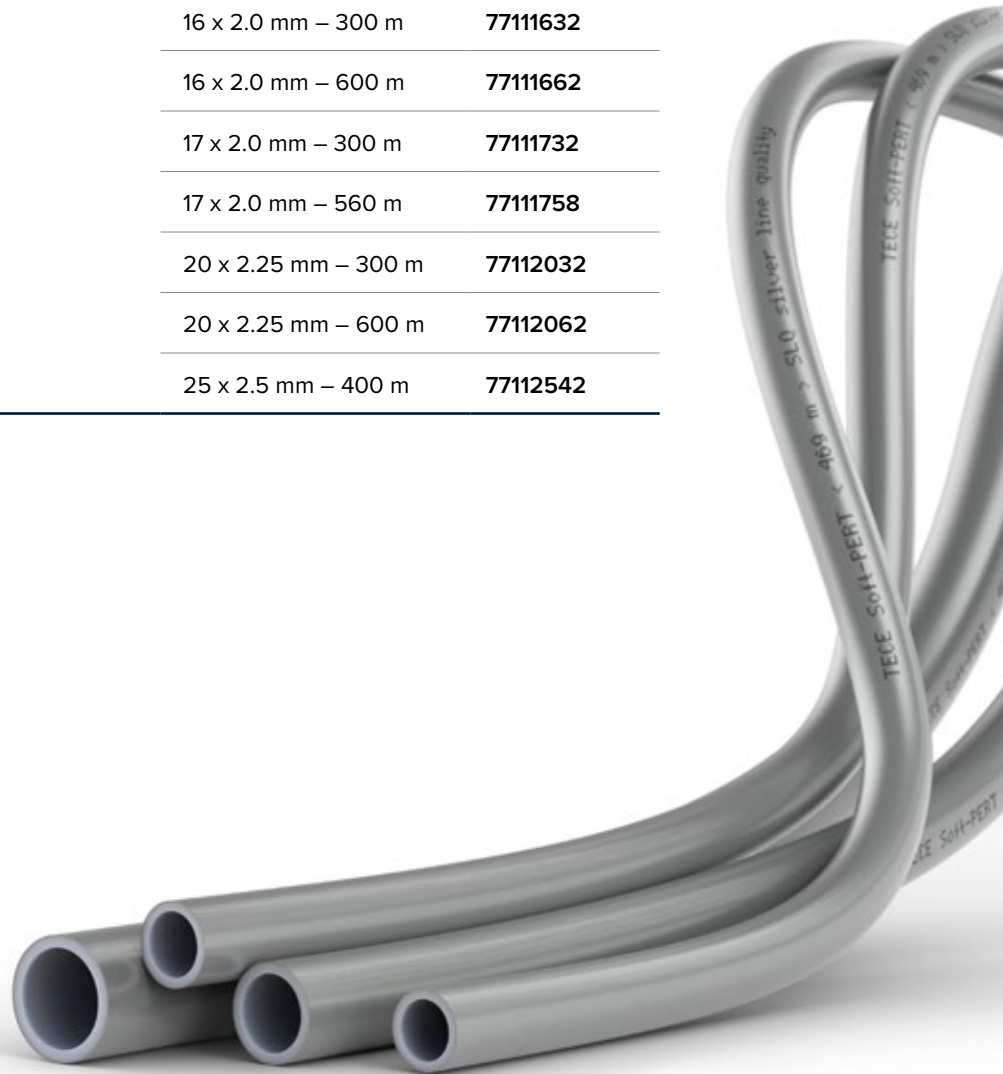


TECEfloor industry heating circuit manifolds, in conjunction with the TECEfloor Soft-PERT 5S pipe (25 x 2.5 mm) reliably ensure an even distribution of the heat energy provided. The modules are connected gently with just two turns and can be combined as required. Another reason to relax: All manifolds undergo a 100% functional and tightness test in production.



Product range overview

Description	Dimension	Item number
	16 x 2.0 mm – 120 m	77111614
	16 x 2.0 mm – 300 m	77111632
	16 x 2.0 mm – 600 m	77111662
	17 x 2.0 mm – 300 m	77111732
	17 x 2.0 mm – 560 m	77111758
	20 x 2.25 mm – 300 m	77112032
	20 x 2.25 mm – 600 m	77112062
	25 x 2.5 mm – 400 m	77112542



For more information visit
www.tece.com

TECE GmbH
International Business
 T +49 2572 928-999
international-business@tece.de
www.tece.com/en

Appearance and texture may vary depending on material, manufacturing process and lighting conditions.
 In order to improve the flow of reading, no distinction is made between feminine, masculine and non-binary in gender-related expressions. However, all genders are always implied.