

TECE wall-mounted floor drain with LIP System 27

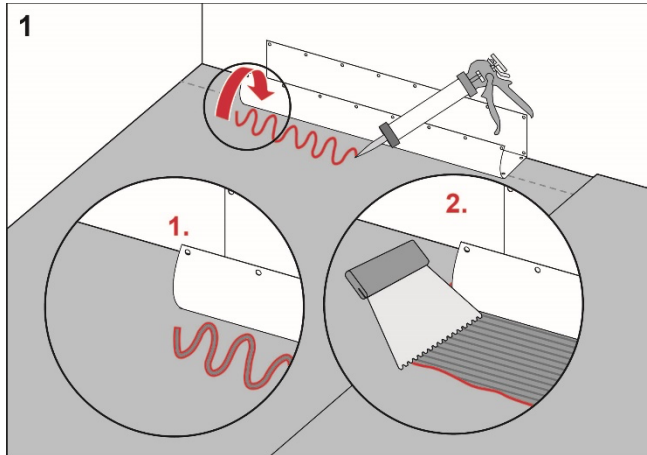
Execution

Install the TECE floor drain close to the wall in accordance with the instructions from TECE.

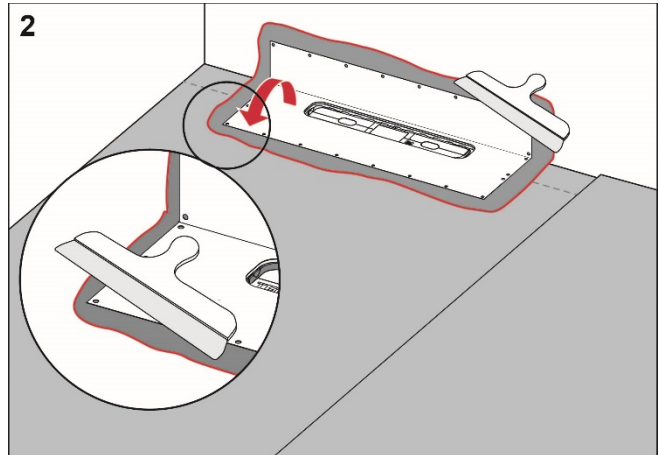
Preparation

Carefully check the factory-fitted drain collar. If it is damaged, the collar should be replaced.

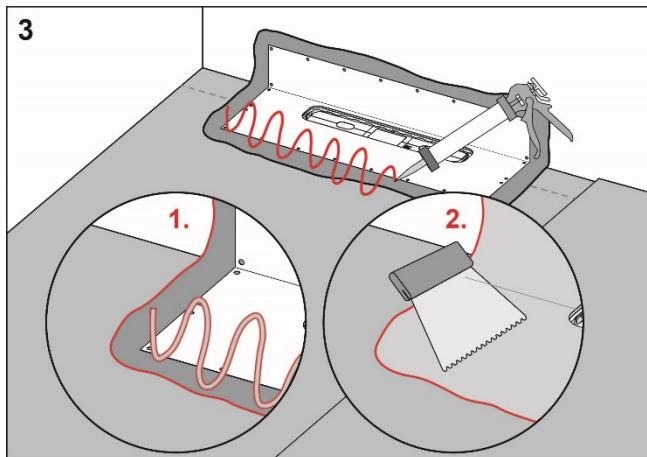
Procedure



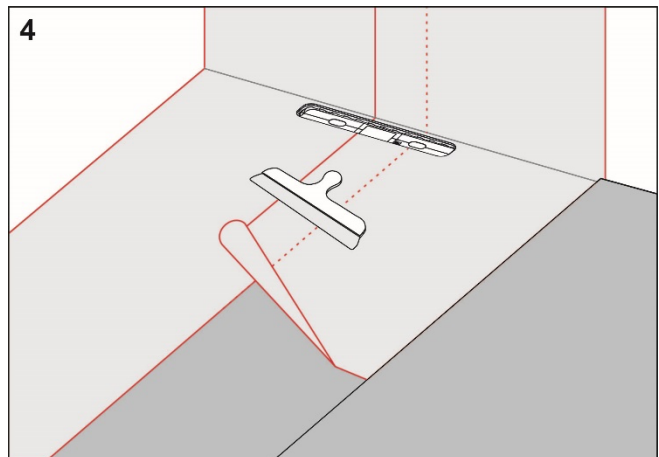
Apply LIP Skarvlim MSP to the floor and wall areas which the drain collar will cover. Spread the adhesive with a fine-toothed adhesive spreader.



Unfold the collar on the floor and wall. Carefully smooth out the collar and ensure that no wrinkles or blisters occur.



Apply LIP Skarvlim MSP or LIP 2K Folie W-Lim on the drain collar and LIP 2K Folielim W-Lim to the rest of the floor and wall area.



Install LIP Folie and seal all seams with LIP 2K Folielim W-Lim.

**RI
SE**

C900686
C900687

LIP
www.lip.dk

For more information about LIP
System 27: www.lip.dk

Complies with the
Trade Rules of the Swedish Ceramic Tile
Council for Wet Areas
BBV 21:1