

TECE wall-mounted floor drain with KD+ Foliesystem Projekt and Foliesystem Trygg

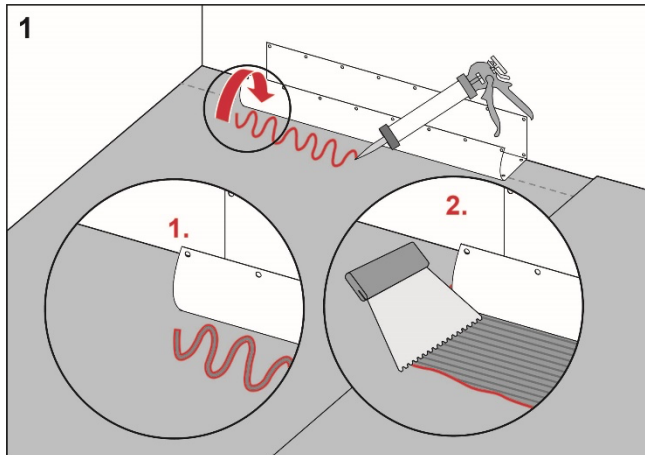
Execution

Install the TECE floor drain close to the wall in accordance with the instructions from TECE.

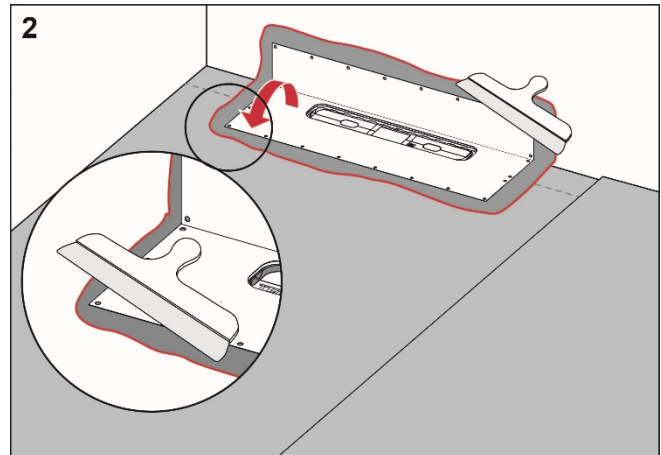
Preparation

Carefully check the factory-fitted drain collar. If it is damaged, the collar should be replaced.

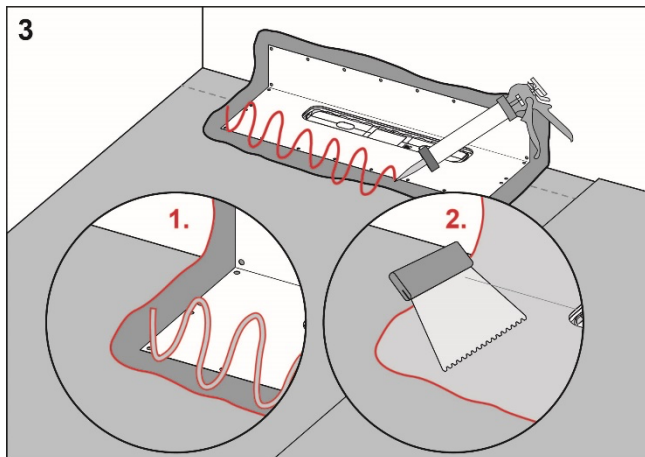
Procedure



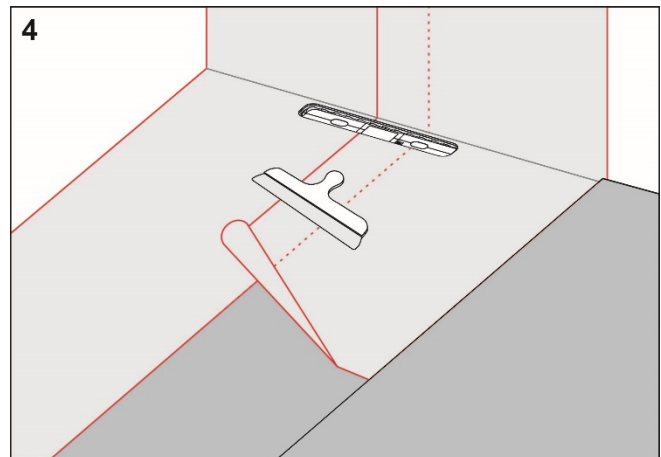
Apply KD+ Skarvlim to the floor and wall areas which the drain collar will cover. Spread the adhesive with a fine-toothed adhesive spreader.



Unfold the collar on the floor and wall. Carefully smooth out the collar and ensure that no wrinkles or blisters occur.



Apply KD+ Skarvlim on the drain collar and KD+ 2K Folielim to the rest of the floor and wall area.



Fit KD+ Folie Trygg or Folie Projekt and overlap the drain collar by a minimum of 50 mm. Seal all seams with KD+ 2K Folielim.

**RI
SE**

C900686
C900687

KD+

For more information about KD+
Foliesystem:
www.kakeldesign.se

Complies with the
Trade Rules of the Swedish Ceramic Tile
Council for Wet Areas
BBV 21:1