

TECE wall-mounted floor drain with FF System Folie

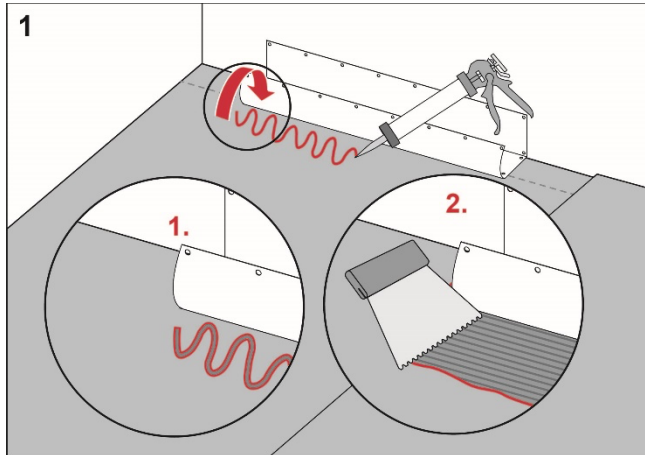
Execution

Install the TECE floor drain close to the wall in accordance with the instructions from TECE.

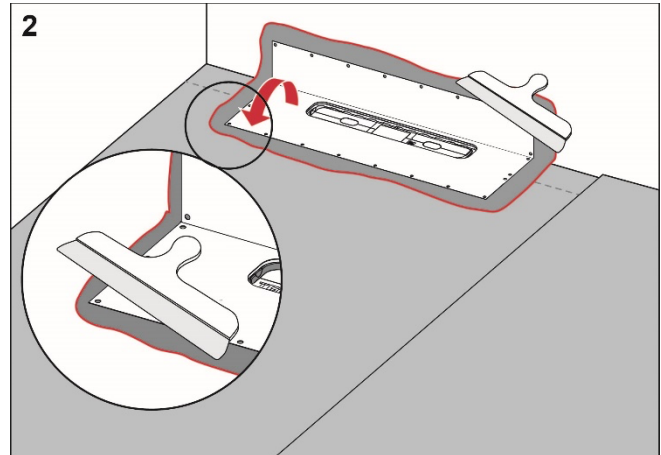
Preparation

Carefully check the factory-fitted drain collar. If it is damaged, the collar should be replaced.

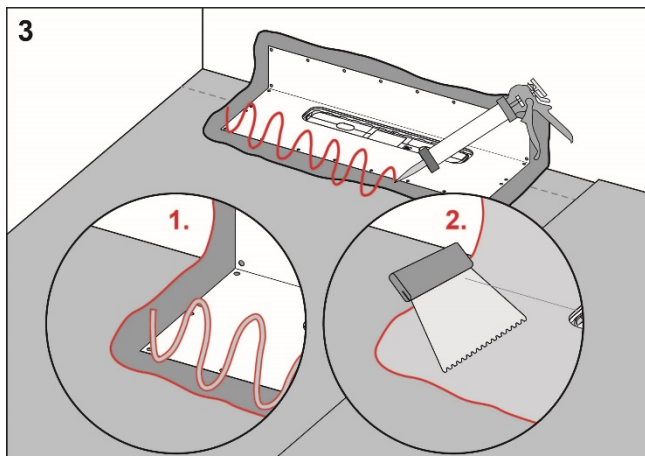
Procedure



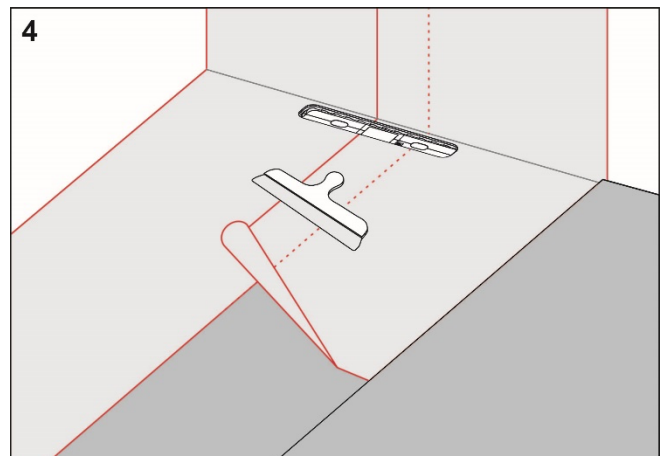
Apply FF M-1K Lim or FF M-2K to the floor and wall areas which the drain collar will cover. Spread the adhesive with a fine-toothed adhesive spreader.



Unfold the collar on the floor and wall. Carefully smooth out the collar and ensure that no wrinkles or blisters occur.



Apply FF M-1K Lim on the drain collar and FF M-1 Membran or FF M-2K to the rest of the floor and wall area.



Install FF Folie and overlap the drain collar by a minimum of 50 mm. Seal all seams with FF M-1 Membran, FF M-1K Lim or FF M-2K.

**RI
SE**

C900686
C900687

**FF
Kakel**

For more information about FF
System Folie:
www.ffkakel.se

Complies with the
Trade Rules of the Swedish Ceramic Tile
Council for Wet Areas
BBV 21:1