

TECE wall-mounted floor drain with Casco Folie 1

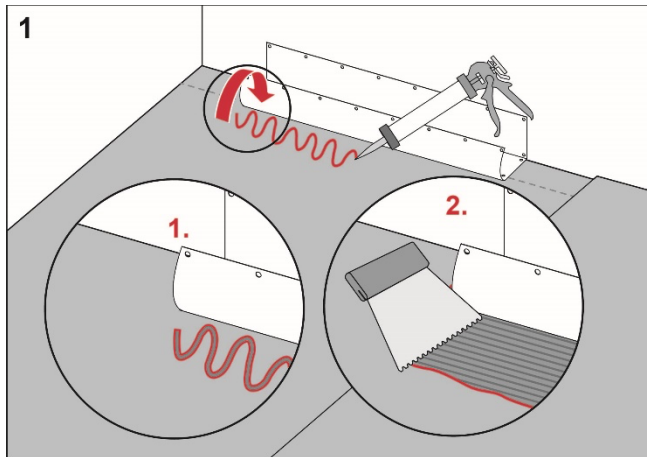
Execution

Install the TECE floor drain close to the wall in accordance with the instructions from TECE.

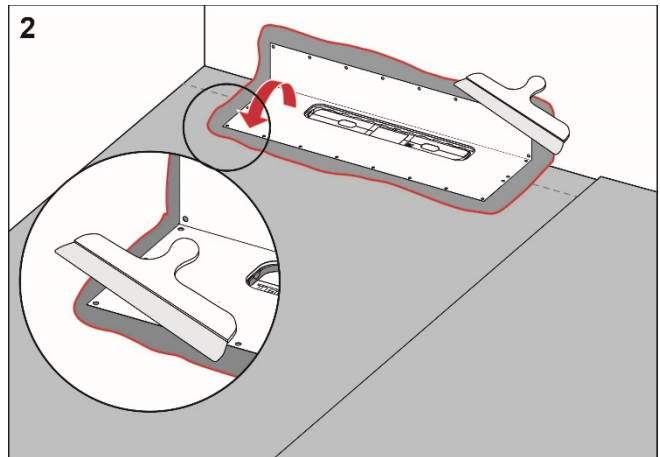
Preparation

Carefully check the factory-fitted drain collar. If it is damaged, the collar should be replaced.

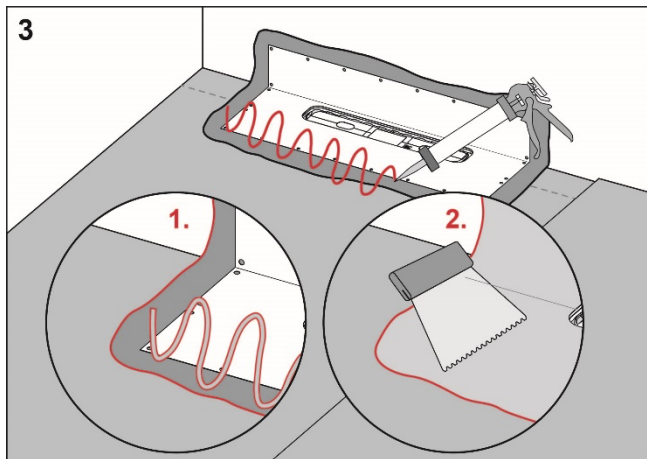
Procedure



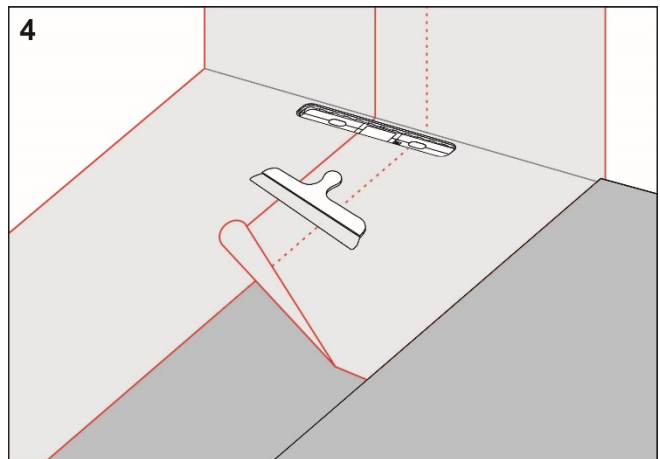
Apply Wetstop Foil Seal to the floor and wall areas which the drain collar will cover. Spread the adhesive with a fine-toothed adhesive spreader.



Unfold the collar on the floor and wall. Carefully smooth out the collar and ensure that no wrinkles or blisters occur.



Apply Casco Wetstop Foil Seal to the drain collar and Casco Wetstop iFIX to the rest of the floor and wall area.



Install Casco Foil and overlap the drain collar by a minimum of 50 mm. Seal all seams with Casco Wetstop iFIX.

**RI
SE**

C900686
C900687



For more information about the
Casco Folie 1:
www.casco.se

Complies with the
Trade Rules of the Swedish Ceramic Tile
Council for Wet Areas
BBV 21:1