

TECE wall-mounted floor drain with ARDEX 7+8 Hybrid

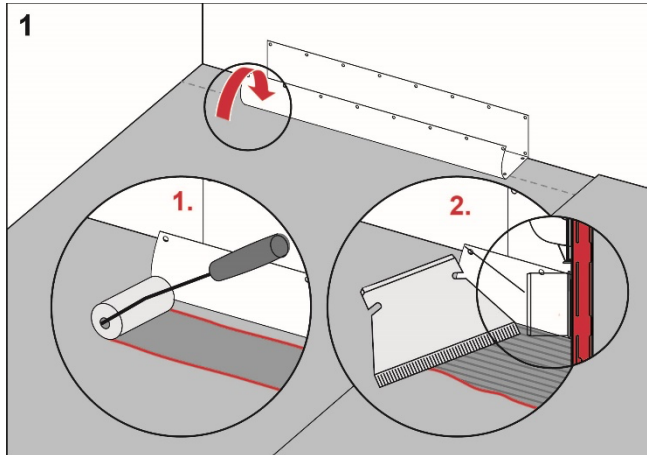
Execution

Install the TECE floor drain close to the wall in accordance with the instructions from TECE.

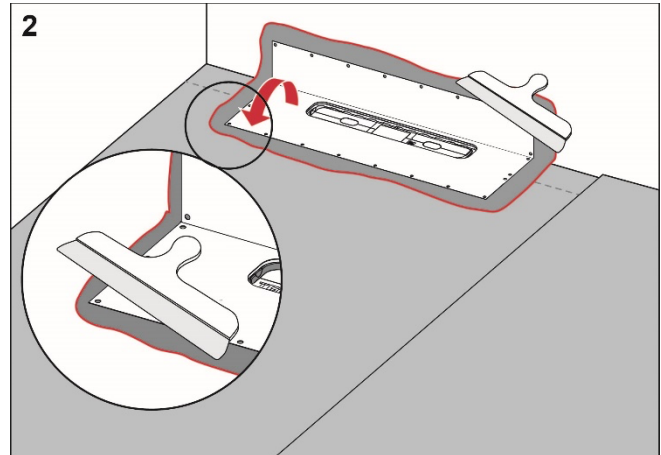
Preparation

Carefully check the factory-fitted drain collar. If it is damaged, the collar should be replaced.

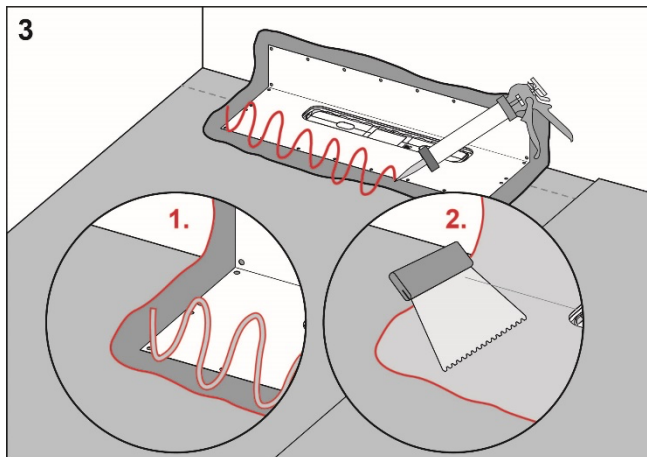
Procedure



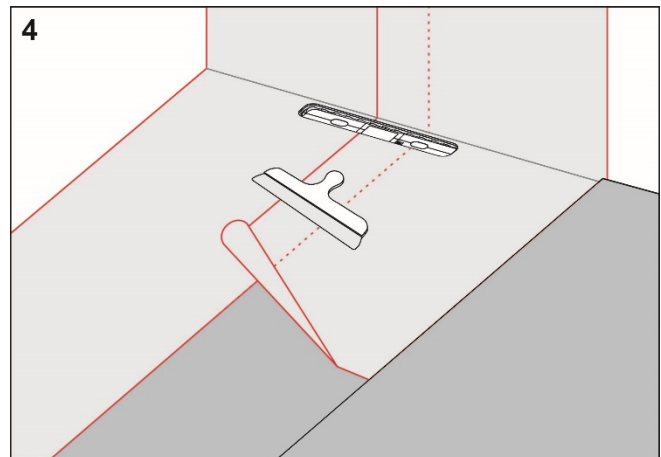
Apply ARDEX 7+8 to the floor and wall areas which the drain collar will cover. Spread the adhesive with a fine-toothed adhesive spreader. Spray the adhesive with water.



Unfold the collar on the floor and wall. Carefully smooth out the collar and ensure that no wrinkles or blisters occur.



Apply ARDEX 7+8 on the drain collar and to the rest of the floor and wall area. (Use a roller / brush)



Install ARDEX Foil and overlap the drain collar by a minimum of 50 mm. Seal all seams with ARDEX 7+8.

**RI
SE**

C900686
C900687



For more information about
ARDEX Tätsystem:
www.ardex.se

Complies with the
Trade Rules of the Swedish Ceramic Tile
Council for Wet Areas
BBV 21:1