

**TECE**  
close to you

TECE Linear Drainage

**RELIABILITY  
CAN BE THIS  
BEAUTIFUL**

**SHOWER CHANNELS AND SHOWER  
PROFILES MADE BY TECE**



# MORE FREEDOM PER SQUARE METRE

Limitless. Spacious. Good. With the floor-level tiled shower, the boundaries between shower area and floor design become blurred. As a continuous tiled surface, it adds freedom of design and movement to the bathroom. Small bathrooms become more spacious and break down barriers: because you can move around comfortably without stumbling. This is how the trend theme of modern bathroom architecture combines design and function for everyone – with drainage systems from TECE.



## TECEdrainprofile

Good design: TECEdrainprofile convinces as a recessed, elegant surface drainage system – colour-coordinated with shower, washstand fitting and toilet flush plate, it offers new design freedom.



## TECEdrainline

Restrained elegance: TECEdrainline meets the highest demands in terms of restrained and almost invisible shaping – versatile and proven a million times.

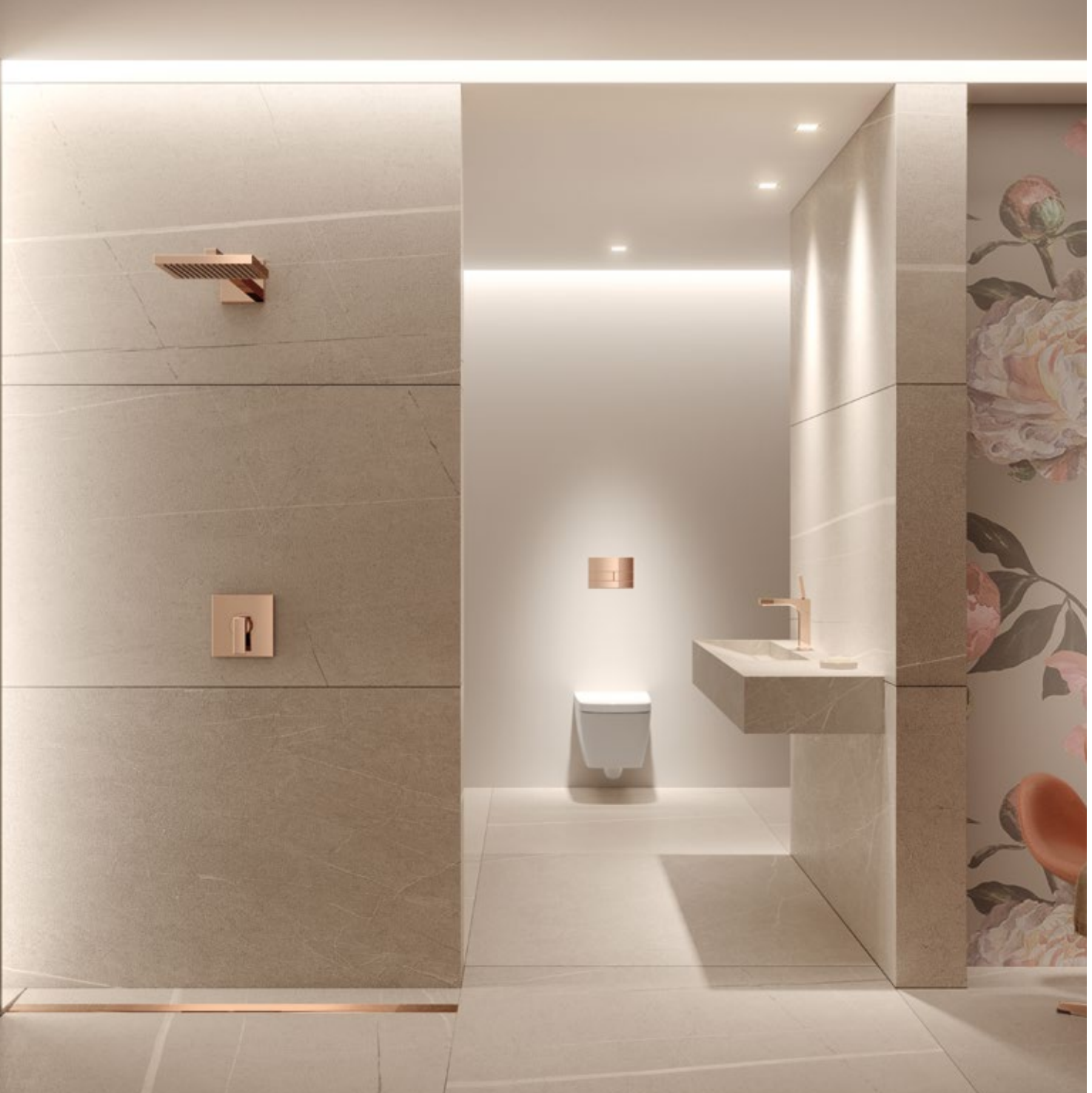
“ Nowadays, bathrooms are as individual as the people that use them. Maximum freedom of design is therefore a top priority. ”



“ What makes my work easier?  
A product that is versatile and easy to install – without compromising on quality and safety. ”

## **Floor-level showers made by TECE. Simply good. Simply appealing.**

Modern bathroom design does not mean building unusual bathrooms; rather, it is about thinking and planning a space for the long term. First and foremost, it is always a matter of making the best use of the space. The shower area is particularly important in this respect. Individual design, easy installation and long-term safety go hand in hand with shower solutions made by TECE.



TECEdrainprofile

## ALL-ROUNDER WITH OPTIMISED FLOW

Appealing, practical, recessed. The shower profile from TECE has many qualities, and is equally convincing in terms of variance, installation and design.

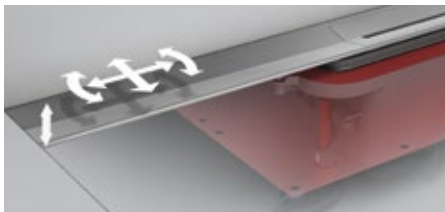
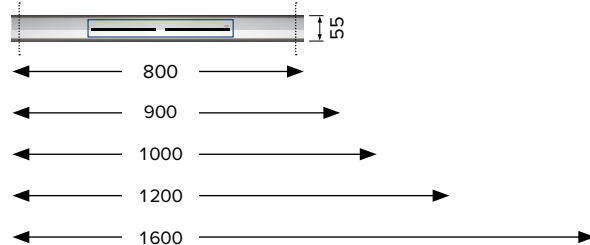




## Easy to install

TECEdrainprofile is made for every bathroom. The profiles can be easily shortened with a hand saw for an exactly niche-flush installation and are compatible with the extensive range of modular system accessories.

## Product range from 800 mm to 1600 mm



The shower profile can still be finely adjusted both horizontally and vertically even after the drain is mounted in the screed.



## Sealed with a click

Safe sealing with clickable sealing sleeve.

## The advantages at a glance

- Colour harmony, from the shower profile to TECESquare toilet flush plates to washstand or shower fittings and accessories
- Range in extra wide – in lengths from XS to XXL
- Can be cut to size on both sides – for recessed installation
- Inner gradient for optimum water drainage – prevents deposits
- Safe sealing with Seal System. Click in, done!
- Wall bracket for quick and easy installation – reusable
- Easy to clean. Wipe and done!
- Conforms to DIN EN 1253 and DIN 18534 standards

## Modern bathroom design

TECEdrainprofile sets elegant accents: The new PVD surface finish comes in three metallic variants and, most recently, in the elegant trend colour matt black.



PVD Red Gold,  
brushed or polished



PVD Gold Optic,  
brushed or polished



PVD Black Chrome,  
brushed or polished



PVD Black,  
brushed

# TRIED AND TESTED A MILLION TIMES

This shower channel redefines the interface between architecture and building services. To date, it has been used more than 2,000,000 times for the highest hygiene requirements and is more up-to-date than ever.



## **Stripped down to the essential**

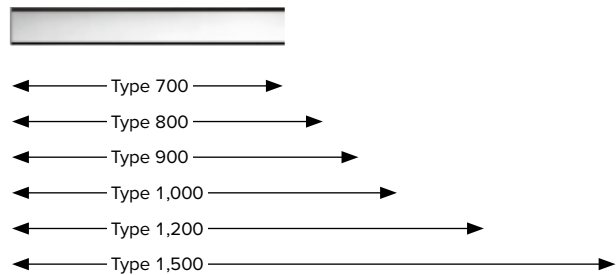
The more uniform the floor covering, the higher quality and more spacious the room appears. The TECEdrainline natural stone shower channel completely takes a back seat in visual terms because it can be seamlessly clad with natural stone slabs. Only the narrow drain slits in the natural stone mark the transition.

## Architecture and function in harmony

The stainless steel channel body is closed and free of screws and threaded parts on the inside. This means no hair or dirt can get caught. The internal gradient as a special product detail ensures perfect drainage of the water and prevents deposits.



Product range from 700 mm to 1500 mm



### Sealed with a click

Safe sealing with clickable sealing sleeve.

## The advantages at a glance

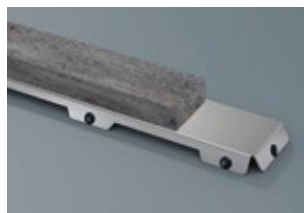
- Maximum spaciousness thanks to continuous flooring design
- High-quality range of design covers and tileable channels
- Easy to clean thanks to seamless channel body made of stainless steel
- Inner gradient for optimum drainage capacity
- Protective construction cover against damage and dirt
- With anti-capillary edge and optional secondary drainage – hygienic and protected against backflow
- DIN EN 1253 and DIN 18534 compliant (applies for all water impact categories)

## For highest demands

TECEdrainline design covers also fulfil very individual wishes for harmonious bathroom designs. With covers of polished or brushed steel or glass. The version with tileable channel or natural stone base is almost invisible.



for tiled floors ...



for natural stone ...



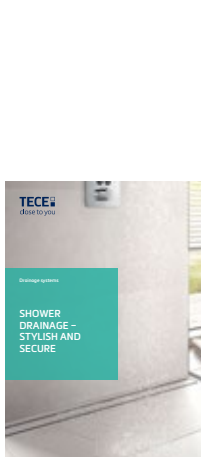
made of stainless steel ...



or glass.

# Discover the world of drainage systems made by TECE.

For detailed product knowledge and further information about the company and services, please visit [www.tece.com](http://www.tece.com).



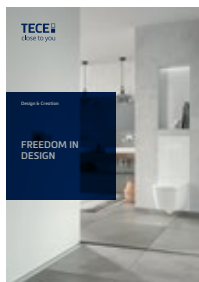
Product brochures  
**Drainage systems**



Design catalogue  
**Room for ideas**



Product folder  
**TECEdrainline /  
TECEdrainprofile**



Competency brochures  
**Design and creation**

For more information visit  
[www.tece.com](http://www.tece.com)



TECE GmbH  
T + 49 25 72 / 9 28 - 999  
[international-business@tece.de](mailto:international-business@tece.de)  
[www.tece.com](http://www.tece.com)