



TECE
close to you

Project & Planning

**RELIABILITY
IN PROJECT
BUSINESS**

CLOSE TO YOU.

Understanding people and their requirements – that is what motivates us.

In this spirit, with our customers in mind, we develop products and services that make working on site easier and safer.

A WORLD OF SOLUTIONS.

TECE is an innovator in the sanitary installation sector. We make an impact with products that can be used to build an entire world. With well-thought-out solutions, reliable technology, long-lasting functions and timeless design.

Get to know us

We are a medium-sized, family-owned and run business with headquarters in Emsdetten (Germany). We have been developing products and services for fitters, planners and architects ever since the company was established in 1987. Today, with 22 international branches, we feel at home all over the world and maintain open communication with our partners in the full spirit of "Close to you".



Wall sections and pre-wall installations

Bathroom wall sections and system shafts for construction projects



Pipe systems

Push sleeve systems, push-fit systems and floor heating systems



Floor heating system

Complete system of heating pipes, installation accessories, manifolds and controls



Grease separators

Plastic grease separators for free-standing or underground installation, mobile stainless steel grease separators and lifting systems



Flush plates

Selected collections for private homes or public buildings, with different designs, materials and colours



Sanitary systems

From toilet ceramics and flush plates to sanitary modules



Drainage systems

Shower channels, shower profiles and point drainage systems



“During the planning process – how can the legal requirements be quickly and reliably implemented?”



“At the building site – how can time requirements be reliably calculated?”



“In the project business – how can the financial risks for investors be reduced?”

THE PLAN FOR SAFETY.

Every day, construction projects pose new challenges for everyone involved. Planning and construction demand that all time-related, financial and legal risks are identified and controllable.

Keeping tabs on time

Even with years of experience, the time required to complete the building work can only be calculated with difficulty. The more tasks and trades involved in the project and the longer the distances to the site, the higher the risk of delay. To put it simply, the more reliable the actual time calculations, the more probable the financial success.



“Construction projects really get the blood flowing. Every day, we solve challenges in a professional and creative way.”



Legal responsibility

Complex legal requirements must be taken into account as early on as the pre-planning stage. After completion, planners and tradesmen remain liable for the building's safety, for the technically accurate implementation and for an error-free operation. Standards and legal requirements such as fire protection or potable water hygiene are binding and must be adhered to. Defects and rework involve enormous costs.

Keeping cost-effectiveness in mind

Handing over the flawless property to the customer on the due date is an important milestone for the financial success of everyone involved in the process. Already during the planning stage, the crucial foundations are laid to ensure this by developing and selecting the right technical solutions. Intelligent planning and selection of materials not only relieves the construction budget but also takes future operating costs into account.

CONTENTS



06 **Time**
Planning and implementing to schedule.

16 **Laws & Standards**
On the safe side.

24 **Cost-efficiency**
Quality is worth it.

32 **Services & Academy**
Run by professionals for professionals.

TIME

Planning and implementing to schedule.



COMPLETED AHEAD OF TIME.

TECE has been developing and producing bathroom wall sections and system shafts for construction projects since the mid 90s. With the associated high level of prefabrication, TECE helps you to manage time, quality and costs.



1

Customised manufacturing

Industrially prefabricated modules for bathrooms and sanitary areas significantly reduce time requirements and make calculations more reliable. In principle, the entire pipework for all media, as well as shut-off devices, water meters, ventilators,

sound-absorbing elements and formwork for the ceiling penetration sealing system are all integrated into the walls. This controlled industrial prefabrication also significantly reduces the probability of making mistakes at the building site.



“At the start of the week, 30 bathroom wall sections are delivered to the site. By lunchtime on Friday, everything is ready-installed. Such foresighted planning makes my life stress-free.”

2



Customised planning

During the planning phase, TECE application engineers work together with project managers to determine the technical and legal requirements. In the next step, a customised bathroom wall section concept is developed and tested on a prototype. Next, the final specifications are incorporated into the production drawings. That is how TECE makes sure that the process is safe.

- 1 A prefabricated wall section
- 2 Accepting a prototype

JUST-IN-TIME AT THE BUILDING SITE.

TECE delivers finished modules just-in-time to the building site. Set up and connect – all the plumbing and sanitary work is completed in the building shell. This significantly reduces the need to coordinate work with other trades, which streamlines the process and makes it easier to calculate.



Individual delivery

The prefabricated bathroom wall sections are delivered according to a specified schedule in close consultation with the site management. Depending on the location, containers or swap bodies can also be supplied with bathroom wall sections.



2



3

Uncomplicated installations in new and existing buildings

Prefabricated bathroom wall sections also offer considerable advantages in renovation projects. Particularly when the building being renovated is inhabited. Planners and tradesmen can determine delivery dates beforehand and estimate assembly times. This significantly reduces disturbance and vacancy rates.

1

- 1 A customised prefabricated bathroom wall
- 2 Delivery on the agreed date
- 3 Assembled ready for installation

OUT OF THE BOX. SET. GO.

Products for construction projects must be robust, uncomplicated and easy to assemble.

This is as applicable in Norway as it is in Singapore. TECE's well-thought-out products stand for efficient installations all over the world.



1

Installed in no time

TECE products are really well-thought-out, e.g. the TECEprofil sanitary module for dry-wall construction. It can be rapidly inserted into any supporting structure.

Ruling out defects

On toilet modules, all the water works in the cistern are pre-installed and tested in the factory.

The cistern is delivered sealed to the building site and does not need to be opened during the construction phase. This saves time and prevents defects caused by the build-up of dirt getting into the system.

2



3

Solutions without frontiers

TECE toilet modules are adapted to country-specific requirements. Take, for instance, the toilet module made for Norway. Norway's popular tradition of timber-frame construction has its own very specific requirements. For example, in the event of frost damage, any leaking water is evacuated out of the dry-wall structure by the sealed bag developed for this purpose and fed into the bathroom's outflow. This protects the timber-frame construction, and local requirements are reliably implemented in a time-efficient way.

- 1 Ready to install – out of the box and onto the wall
- 2 The water works in the cistern are pre-installed, tested and sealed in the factory.
- 3 Protection for timber constructions: the toilet module with sealed bag, specially developed for Norway's specific requirements.

SAFELY ON SCHEDULE.

Construction projects are not just all about working quickly. It is also essential to reliably keep to tight schedules. When many tasks and tradesmen are involved, this can be an exciting challenge.



1

Renovating existing buildings

Renovating inhabited buildings poses a particular challenge. To avoid disturbance and rent reduction as far as possible, a reliable and tight schedule is just as important as keeping construction noise and dirt to a minimum. This may well be difficult to avoid when gutting a building however. On the other hand, rebuilding a bathroom using pre-fabricated bathroom wall sections saves time and a great deal of work. All that is left to do is embed the sound-proofing elements into the bathroom wall sections and then clad and tile them.

This structural restoration concept has been successfully adopted for example in a housing estate built in the 60s in Duisburg (Germany). After beginning construction in the conventional way, the builders soon opted for a prefabricated solution and have now been using this system for the past two years. The result: a comfortable restoration for the tenants and less risk and expense for the owner.



2

On-site service in Latvia

120 TECEprofil toilet modules were installed in "The Pearl" apartment residence near Riga. Technicians from the local TECE branch instructed the fitters directly on site. The fitters were therefore able to install the toilets quickly and flawlessly – and play their part in ensuring the on-schedule completion of the building.

Ready-made hotel bathrooms

For the Crown Plaza Changi Airport Hotel in Singapore, the bathrooms were completely pre-assembled and delivered, together with their facings and fittings, by a prefabricated bathroom installation company. TECE Singapore's technicians developed the technical details for integrating the TECEprofil toilet module in collaboration with the investor, planner and prefabrication company.



3



4

On schedule in Shanghai

The "Shanghai Star River" apartment complex is a large-scale international project. It was constructed on a plot of 714,000 square metres in the district of Min Hang. 400,000 metres of TECEfloor pipe systems were laid for the floor heating system alone. The equipment was delivered on schedule from the TECE branch warehouse on site in China – in coordination with the German central warehouse.

- 1 Housing estate, Duisburg
- 2 "The Pearl" apartment residence, Riga
- 3 The Crown Plaza Changi Airport Hotel, Singapore
- 4 "Shanghai Star River" apartment complex

LAWS & STANDARDS

On the safe side.



CONSISTENTLY SAFE-GUARDED.

System solutions are tested and certified in the interests of all the parties involved – planners, building operators or users. To guarantee the highest safety standards, TECE always gives the issue the necessary attention. Especially where sound insulation and fire protection are concerned.

“Professional product systems deliver safety, from planning through to the final handover.”



Fire resistance test at the Materials Testing Institute in Braunschweig (Germany). Depending on the design of the bathroom wall section, when exposed to fire on one side, fire resistance classes of up to F 120 were achieved.



Soundproofing tests on a TECE bathroom wall section at the Fraunhofer Institute for Building Physics. It is wise to have a low level of noise in hotels, but the same is also true for private residences. Special sound-absorbing elements are used in the TECEprofil system to ensure low noise levels. Independent reports confirm the reduced transmission of sound waves in the building structure.

Actively engaged in the work of standardisation committees

Standards can also change from time to time. When there are long planning lead times, it can occur that a different standard applies by the time the actual construction work is carried out. TECE is actively engaged in the work of standardisation and advisory committees. This means that the latest knowledge determines the development of products and services at TECE. By working with us, our partners benefit directly from this advanced knowledge.

In-house laboratory tests

Elaborate test procedures are performed at our in-house laboratory. The aim is not only to fulfil, but also to exceed, legal requirements.

Independently tested

Specific requirements, including for the highly sensitive areas of sound insulation and fire protection, are already integrated in TECE product and system solutions.

The results of independent testing bodies regularly confirm the high quality of TECE system solutions, and that applies on an international scale.

Signs of quality

International products require international approvals. For that reason, TECE's pipe systems are continuously monitored by a whole range of international external inspection bodies.

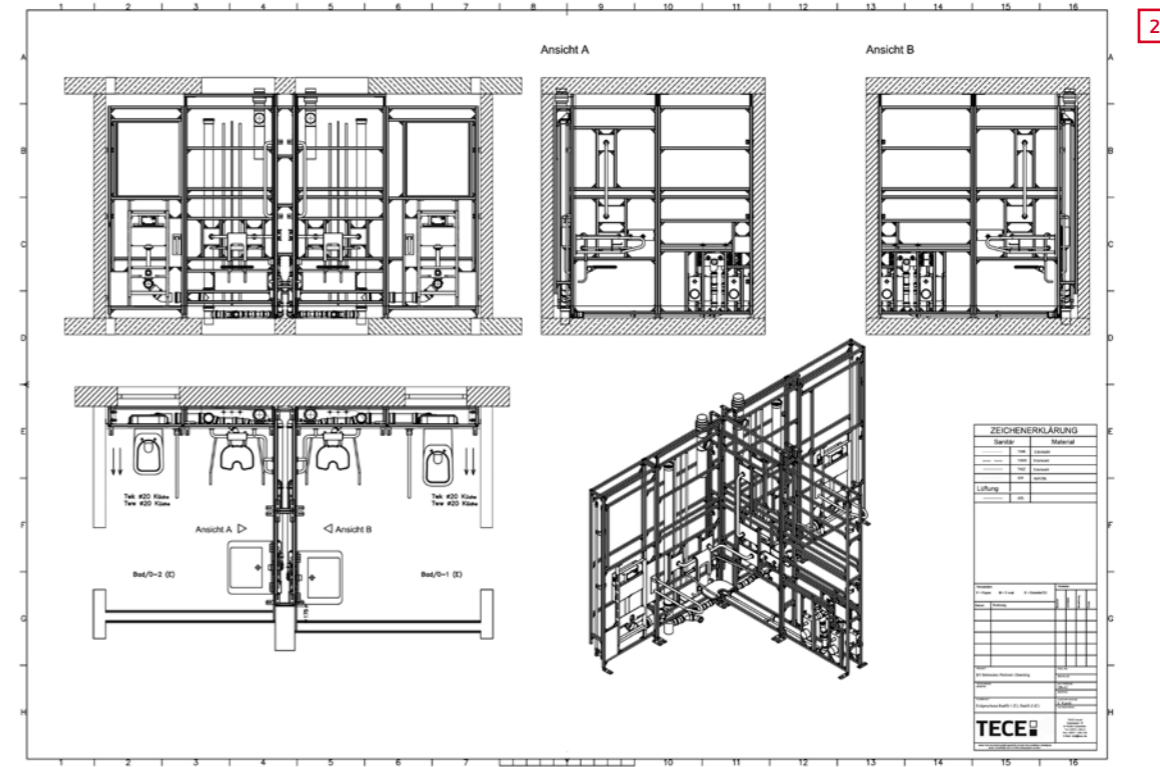


SAFELY IMPLEMENTED.

Potable water hygiene, sound insulation, fire protection and barrier-free layouts – TECE delivers safety from A to Z. From planning through to implementation. All from one source.



1



2



3

Many requirements – one solution

The people in charge developed a special concept for the bathrooms in the “Oberding” Senior Citizens’ Centre. Barrier-free layouts, anchoring points for support arms, floor level showers and observance of drinking water hygiene all had to be taken into account.

Thanks to the structural properties of TECE wall sections, it was possible to build them as partition walls to meet fire resistance class F 30 – in this way, there was no need for additional walls.

After the production drawings had been approved and the wall sections prefabricated, the sections were delivered on time. TECE application engineers instruct the fitters.

- 1 “Oberding” Senior Citizens’ Centre
- 2 Dimension drawing, “Oberding” wall section
- 3 TECE employee during the planning phase

PERFECT PROTECTION, EASILY ASSEMBLED.

Standards and legal requirements transferred into well-thought-out product solutions. That is TECE's strength.



1

Tried and tested technology

It is particularly in hospitals that a wide variety of sensitive standards and guidelines must be observed. Complete freedom from barriers and strict hygiene requirements are compulsory there. TECE shower channels have proven themselves millions of times over, including in this area of application.

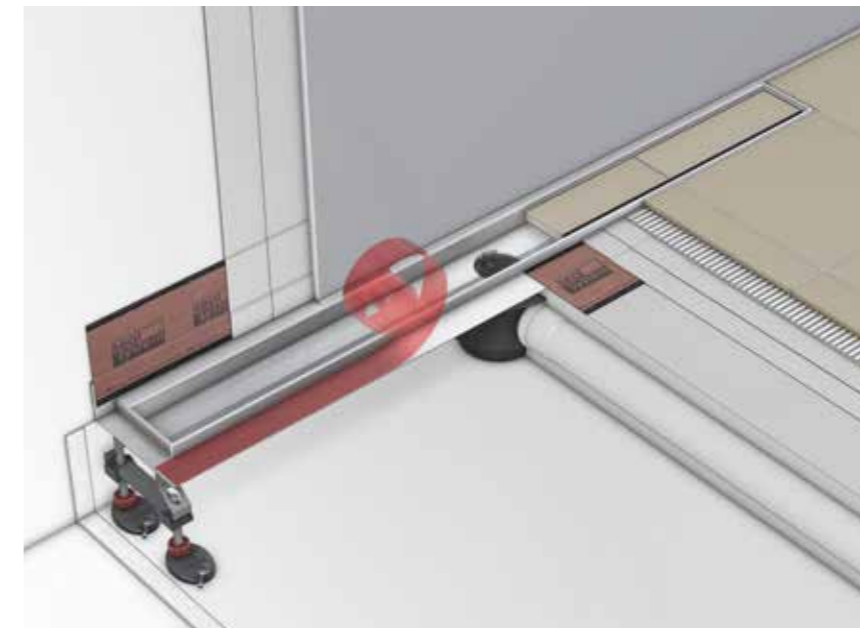
- 1 Franziskus Hospital Bielefeld: barrier-free bathroom design with TECE
- 2 TECEflex has proven itself for decades.
- 3 Safety with certification



One system for all situations

For 25 years, millions of reliable pipe connections have been created for drinking water, heating, compressed air or gas installations with the O-ring-free TECEflex push sleeve system which ensures minimum pressure loss.

2



3

Seal of more safety

TECE shower channels are equipped with a continuous anti-capillary edge that reliably prevents standing waste water from penetrating beneath the floor tiles.

Safety and compliance with standards when joining composite seals is ensured by the TECE Seal System which includes a wide range of certified sealing products.



COST-EFFICIENCY

Quality is worth it.



CALCULATED SUCCESS.

Good quality products, services and information play a major role in achieving cost-efficiency. They make the construction project more predictable and easier to calculate.



“For investors, a reliable cost calculation during the planning phase is the foundation for financial success.”



Quality is worth it

Quality prevents unpleasant surprises and ensures reliability during planning, assembly and operation. What counts is getting value for money. A straightforward installation means less time required. A long service life means less maintenance costs. Spare parts available in the long term safeguard functional capability in the long term.

TECE products have proven themselves for many years in daily use. However, if a replacement part is required, these components remain available for up to 25 years from the date of sale.

System quality

Prefabricated TECE wall sections are a well-thought-out system which brings security to calculations. Through prefabrication, considerably more efficient bathrooms can be built with firmly calculable costs. Defects caused by incorrect installation or delays resulting from missing components are avoided as the complete units are delivered ready for installation.

The reduced construction period makes it easier to meet agreed completion dates, ensuring a fast return on invested capital.

KEEPING COSTS IN MIND.

It is not uncommon for sanitary installation systems to remain in use for over 50 years. Therefore, during the planning and dimensioning phase, it is not just the cost of materials, but also durability, repairs, maintenance and consumption that must be borne in mind.



“In the face of tough competition in the hotel business, the cost-saving effect is immediately perceivable where cleaning and water consumption are concerned.”



1

WELL public
Water efficiency label

Manufacturer: TECE GmbH
Product category: WC flush system
Type: Flushing system
Model: TECElux see-Touch
Registration number: WS10581-20148710

A **A++**

Water Efficiency Criteria

Flush volume 0,01	**
Flush volume 5,0 / 4,0 l	**
With flush stop function	**
Dual flushing	**
Contact-free actuation	**
Contact-free actuation & stagnation flush	**

Information about use and installation: www.well-online.eu
A Label of EUnited Valves
European Valve Manufacturers Association



2

Time-saving cleaning

In the hospitality sector, daily cleaning needs to be easy. Indeed, when there are a lot of bathrooms to clean, the demand on time required to ensure good hygiene and the associated staff costs are high.

TECE shower channels are quick and easy to clean. Hair and dirt can be easily wiped away from the stainless steel channel body. There are no corners, hollow recesses, screws or threaded parts to get in the way.

DESIGN PLUS

Top marks for use of resources

The TECElux toilet terminal has been awarded six stars by the Water Efficiency Label. The contact-free dual-flush actuation unit has been awarded top marks in the semi-public and public area. The combination of contact-free technology and easy-to-clean glass facing meets the strictest hygiene standards and enables fast cleaning.

1 Outstanding economy and design – TECElux toilet terminal
2 Quick and easy to clean TECE shower channels

PERMANENTLY LOW OPERATING COSTS.

TECE's well-thought-out system solutions contribute to sustainable and economic operation in hotels throughout the entire world.



1

Green Building in the Golden City

The "Florentinum" is an administration building covering 49,000 square metres in the centre of Prague. Awarded "LEED Gold" certification, it stands for future-oriented buildings – where economic efficiency, ecology and sustainability are given equal consideration.

The 310 TECEprofil toilet modules installed there fit in perfectly with this pioneering concept, as they too have been awarded four stars by the WELL Water Efficiency Label.

- 1 "Florentinum" administration building in Prague
- 2 Ramada Plaza Hotel in Voronezh
- 3 "Tetris Hall" apartment building, Kiev



2

Ramada Plaza Hotel – a bathroom design that pays

TECE drainline shower channels have been installed in the bathrooms of the Ramada Plaza Hotel in Voronezh, Russia. The floor level shower areas in natural stone give the rooms a harmonious, larger appearance. But they also offer advantages in terms of operating costs. The special internal design of the shower channels makes them easy to clean, which means that the staff responsible take less time to clean each room.



3

Economically-dimensioned pipe networks

The "Tetris Hall" building in Kiev, Ukraine offers 190 apartments on a surface area of 24,000 square metres. When drawing up a cost-effective design for the heating system, the cost of materials and pipe dimensions, heating costs and system temperatures were all taken into account. The Ukrainian TECE subsidiary completed the planning with TECEflex.

SERVICES & ACADEMY

Run by professionals for professionals.



PARTNERS IN BUSINESS.

Comprehensive service. From design and implementation to initial commissioning and beyond.



1



2

Long-term support

After completing a project, the After-Sales Service continues to support the smooth operation of your systems. For example, it can find the right replacement part for you or help to repair a malfunction.

On-site service

If required, TECE application technicians brief fitters on site to ensure that everything runs smoothly and that the installation is performed quickly.

Efficient planning

During the planning stage, TECE application engineers help determine the requirements, and draw up ground floor and elevation plans in coordination with architects and planners.

- 1 Faster and safer – TECE on-site application engineers
- 2 Special seminars provide a valuable insight into topical issues.

Exchanging and sharing knowledge

Keeping updated

New knowledge is exchanged and shared in seminars and workshops run by the TECE Academy. This is where participants can, for instance, find out about the latest news on the law and standardisations such as new regulations in sealing technology, potable water hygiene or fire protection. An in-house team of service technicians is at the ready to answer any questions concerning day-to-day business.

Thinking ahead

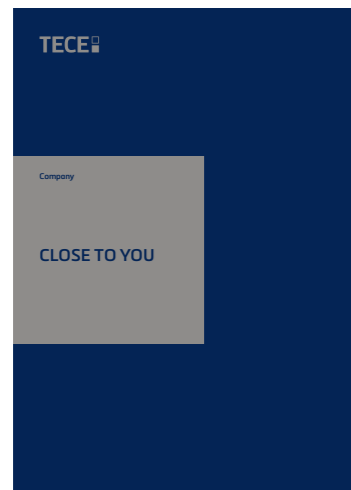
Bathroom and sanitary systems are continuously innovated to ensure more safety, greater comfort and a higher standard of living for the user. Future-oriented products and designs are developed in joint workshops for planners, architects, fitters and users.

More about the seminars

The TECE Seminar team will be more than happy to answer any enquiries and provide information about the subjects and dates. Ask for your regional point of contact at international-business@tece.de

GET TO KNOW US BETTER.

TECE provides expertise in further areas of competence. Visit www.tece.com where you can find detailed information about the company, products and services.



Company

Close to you – The corporate brochure emphasizes TECE's innovative culture and describes the family company's philosophy.



Design & Creation

Freedom in design. The themes of Space & Architecture, Individuality & Design and Function & Technology are aimed primarily at architects and bathroom planners.



Installation & Assembly

Straight-forward, stress-free work. In this brochure, professional tradesmen can find out more about well-thought-out products, quality, services and the TECE Academy.

For more information, go to
www.tece.com

TECE GmbH
International Business
Phone +49 25 72 / 9 28 99 9
international-business@tece.de
www.tece.com