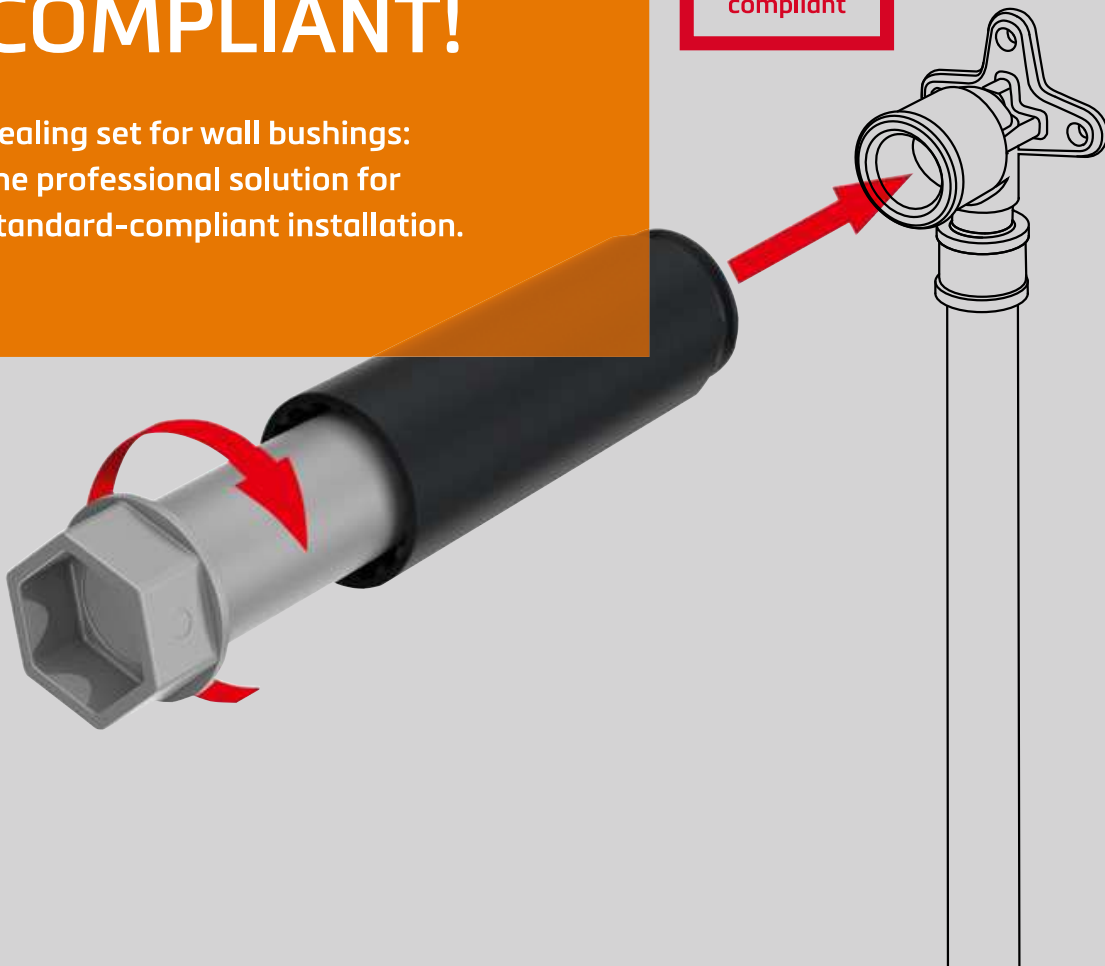


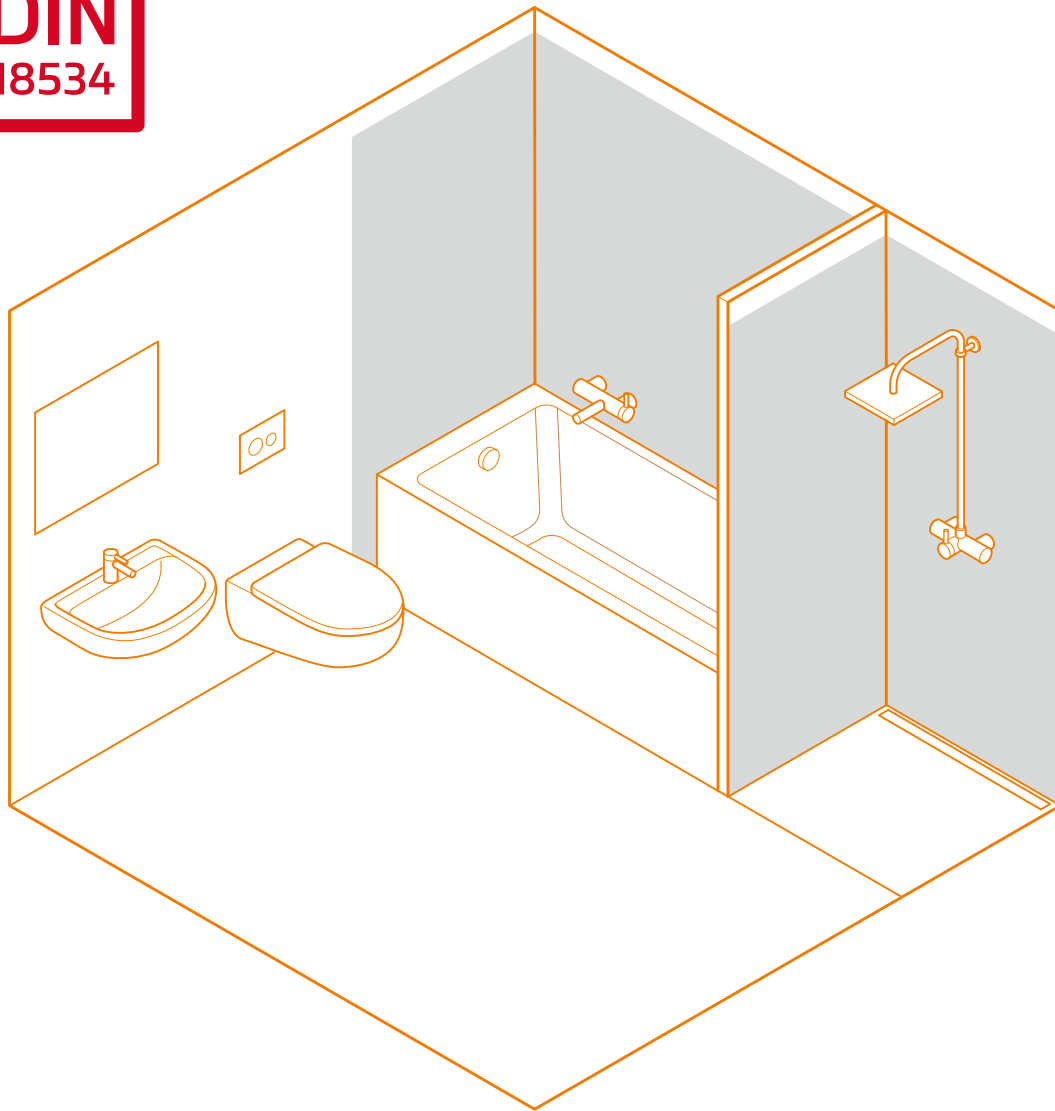
**LEAK-TIGHT,  
QUIET,  
STANDARD-  
COMPLIANT!**

Sealing set for wall bushings:  
the professional solution for  
standard-compliant installation.

**NEW**

**DIN**  
18534  
compliant





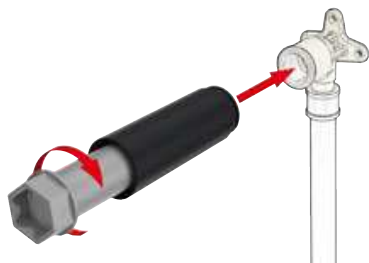
## SEAL WALL BUSHINGS IN COMPLIANCE WITH THE STANDARDS

DIN 18534, which was issued in Summer 2017 for sealing indoor spaces, also precisely defines the requirements for wall bushings above the bathtub and in the shower. The new sealing set from TECE offers a simple, reliable and standard-compliant solution for installation technicians and tilers.

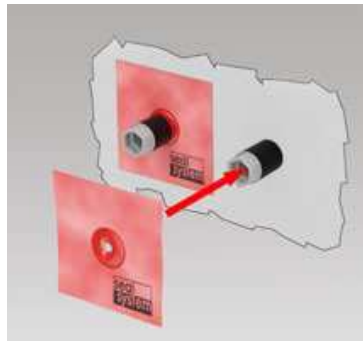
“Standard-compliant solutions that also work across trades: this means relaxed working and increased safety in every construction phase.”



## How it works:



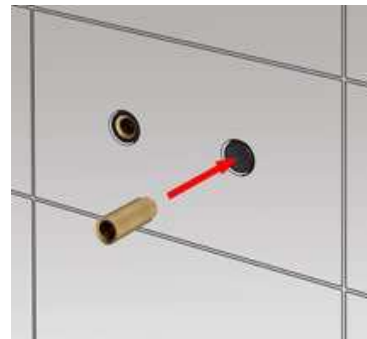
1



2



3



4

- 1 The sealing sleeve is pushed over the wall disk when the construction plug is screwed in and seals outwards.
- 2 The wall cuff is pushed over the plug and sits directly on the sealing sleeve.
- 3 Prior to assembly of the fitting, the sealing sleeve is shortened to be flush to the wall and the reusable construction plug is unscrewed and removed.
- 4 The valve extensions are then screwed in.

## Reliably sealed after the trade handover:

After sealing and tiling, the installer unscrews the construction plug from the sealing sleeve, which stays in the wall. The advantage: in the event of leaks, the water is guided forwards out of the wall. Additionally, the sealing sleeve reduces the danger of an acoustical bridge, which transfers sound from the flowing water to the wall.



## Product Highlights

- Simple and reliable compliance with the standards as per DIN 18534 (2017-07)
- Sealing surface of wall disk secured for valve extension
- Reduced risk of acoustical bridges
- Compatible with many wall disks from other manufacturers
- Compatible with many wall cuffs from other manufacturers

### TECE Seal System construction plug with sealing sleeve

Reusable special construction plug for mounting the sealing sleeve in the shell construction phase. Suitable for leak and load testing with air or water. With a metallic thread made of material suitable for drinking water, including Seal System sealing sleeve.

Length: 117 mm | Thread: 1/2" | Diameter: 38 mm | Dimensions 1/2" | DU 1: 6 pcs.  
Order no. 704802



### TECE Seal System sealing sleeve

Sealing sleeve for standard wall bushings in walls exposed to water in accordance with DIN 18534 (2017). Leakage water caused by an improperly sealed connection is guided forwards out of the wall. Used in conjunction with the Seal System sealing sleeve and a suitable sealing grout. Details about compatibility with third-party products can be found in the technical information. Suitable for TECE wall disks and many third-party products.

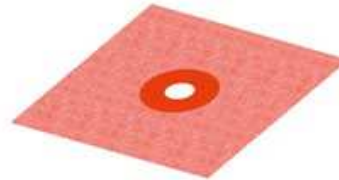
Length: 100 mm | Diameter: 37.5 mm | Dimensions 1/2" | DU 1: 10 pcs.  
Order no. 704801



### TECE Seal System wall cuff

Seal System wall cuff for sealing against intrusion of moisture into the wall via fitting connections.

Length x width: 140 x 140 mm | Internal diameter: 15 mm | DU 1: 10 pcs.  
Order no. 704803



### TECE Seal System sealing set for wall bushings

Seal System sealing set consisting of:  
2 construction plugs | 2 sealing sleeves | 2 wall cuffs | DU 1: 1 piece  
Order no. 704805



For more information, go to  
[www.tece.com](http://www.tece.com)

TECE GmbH  
T +49 25 72/9 28-999  
[international-business@tece.de](mailto:international-business@tece.de)  
[www.tece.com](http://www.tece.com)