



Sanitary Systems

TECEcompact

TECHNICAL GUIDELINES



System Description	11-4
Areas of use	11-4
TECEcompact cistern	11-4
Shell installation TECEcompact cistern	11-4
TECEcompact brick-wall toilet module	11-6
Shell installation TECEcompact brick-wall toilet module	11-6
TECEcompact toilet module	11-8
Shell installation TECEcompact toilet module	11-8
Upgrade kits for TECEone	11-11
TECEcompact cisterns	11-12
Filling valve F 10	11-12
Cleaning the filling valve	11-13
Drainage valve A4	11-14
Setting the flush volumes	11-14
Throttle set	11-15
Assembly	11-16
Water connection	11-16
Detailed installation	11-16
Toilet flush plates	11-17

TECEcompact - System Description

System Description

The TECEcompact series of cisterns is specially designed for brick-wall constructions and narrow spaces. The key component of the TECEcompact series, the cistern, is only 85 mm deep. The compact design enables the installation of toilets in even the narrowest spaces.

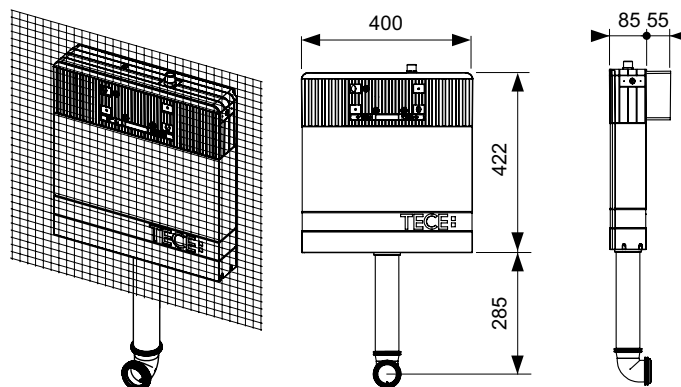


Advantages and Benefits

- The TECEcompact saves you working time due to its simple, fast installation with only four attachment points on the structural shell.
- The narrow, compact design means that it can be installed in particularly narrow pre-wall and in-wall installations.
- The TECEcompact cistern is compatible with the whole TECE range of manual flush plates.

Both the TECEcompact and the TECEcompact brick-wall toilet module are not self-supporting modules and therefore are not suitable for use in dry-wall constructions. In this instance the TECEcompact module must be used.

TECEcompact cistern



TECEcompact cistern - Order Number 9570001

The TECEcompact cistern (installation height 1061 mm) is compatible with floor-standing ceramics – for mounting in or in front of a solid wall.

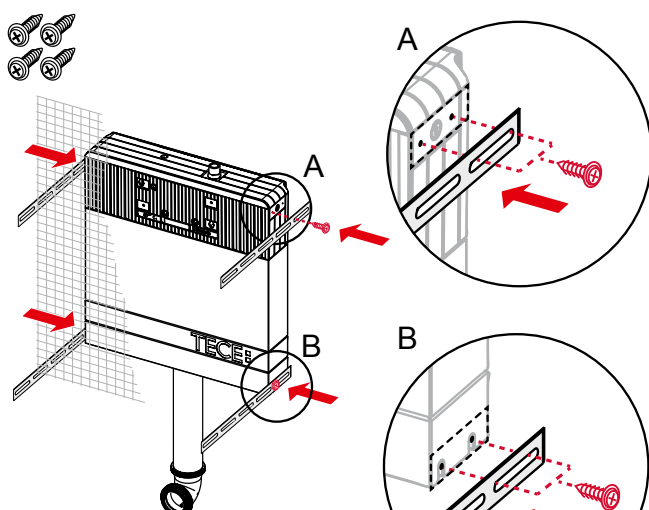
Additional fittings:

- Reinforcement fabrics
- Four brackets for wall-mounting
- Mounting fixtures etc.

Shell installation TECEcompact cistern

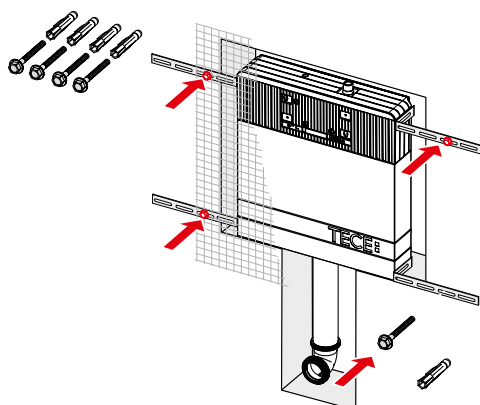


First screw the mounting brackets onto the side of the cistern.

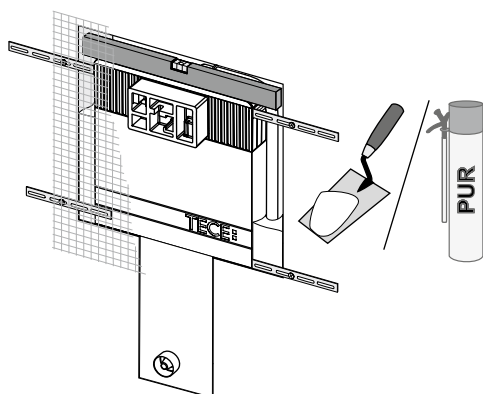


These must only be screwed into the upper and lower areas –as shown.

Then align the metal strips at right angles and attach the cistern to the solid wall.

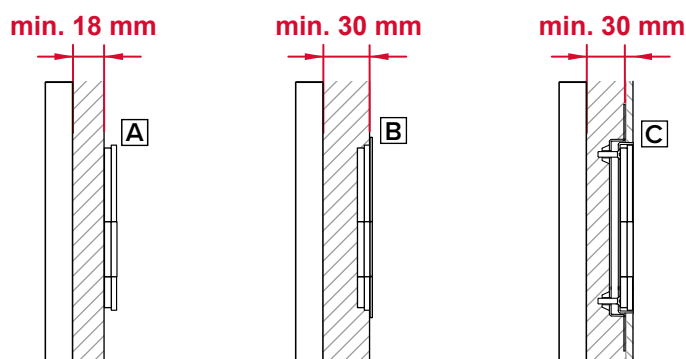


The cistern must be completely built into the wall and all remaining cavities must be filled in. Install the protective shell. Ensure that the installation height is correct. This can not be changed after bricking-in.



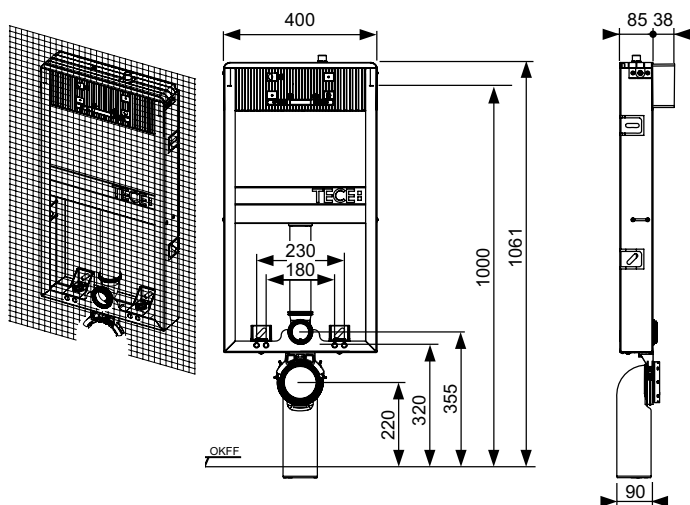
Finally apply the plaster and tile. When bricking-in, ensure that the flush pipe (material: PP) stays in the centre of the opening. The reinforcement fabrics must not be removed and must be incorporated into the plaster.

The wall construction must be at least 18 mm if the actuation is located on the wall (A). A minimum of 30 mm is required to install the TECESquare II (B) and when using the flush-mounted installation frame (C).



TECEcompact – brick-wall toilet module

TECEcompact brick-wall toilet module



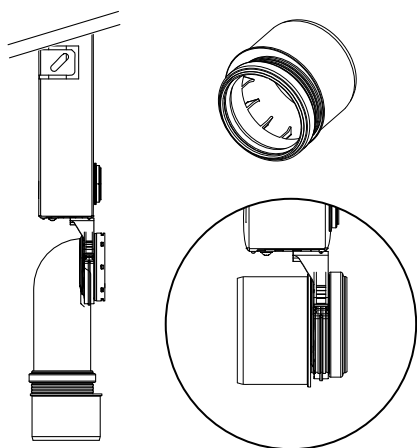
TECEcompact brick-wall toilet module - Order Number 9570000

The TECEcompact brick-wall toilet module (installation height 1061 mm) is suitable for use with wall-mounted ceramics – in a brick pre-wall or in front of a solid wall. The cistern is supplied with a surrounding frame.

Additional fittings:

- Reinforcement fabrics
- Two brackets and elbow brackets for wall mounting
- Drainage bend (PVC) with adapter (HDPE)
- Mounting material etc.

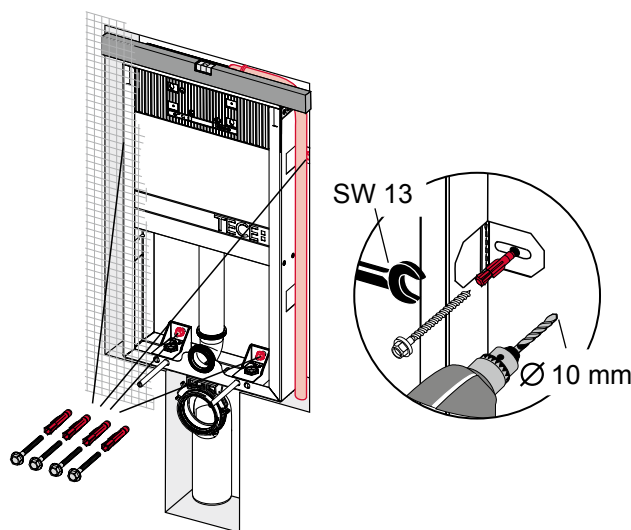
The two-piece waste water bend is compatible with DN 90 or DN 100 waste water pipes. In addition, the adapter can also be used as a horizontal outlet.



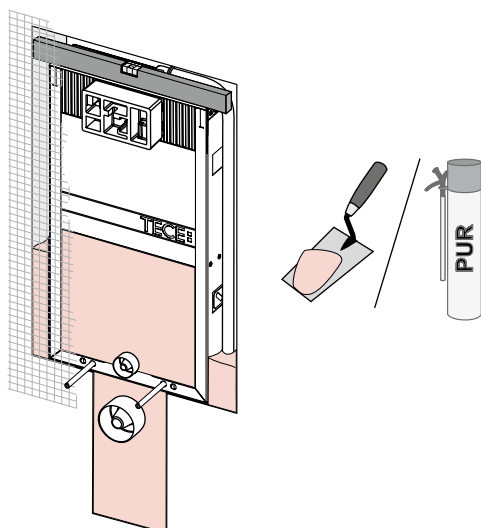
Shell installation TECEcompact brick-wall toilet module



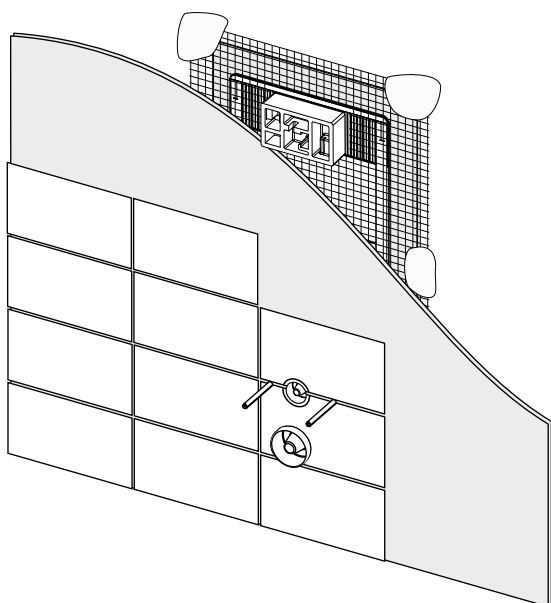
When installing the brick-wall module in a solid wall ensure that the hole is large enough and screw the brick-wall module to the designated brackets (above) or the elbow brackets (below).



Install the protective shell and the threaded rods. All cavities must be filled in.

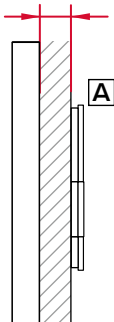


The reinforcement fabrics must be attached - as shown. Finally apply the plaster and tile.

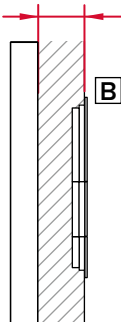


The wall construction must be at least 18 mm if the actuation is located on the wall (A). A minimum of 30 mm is required to install the TECESquare II (B) and when using the flush-mounted installation frame (C).

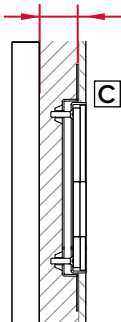
min. 18 mm



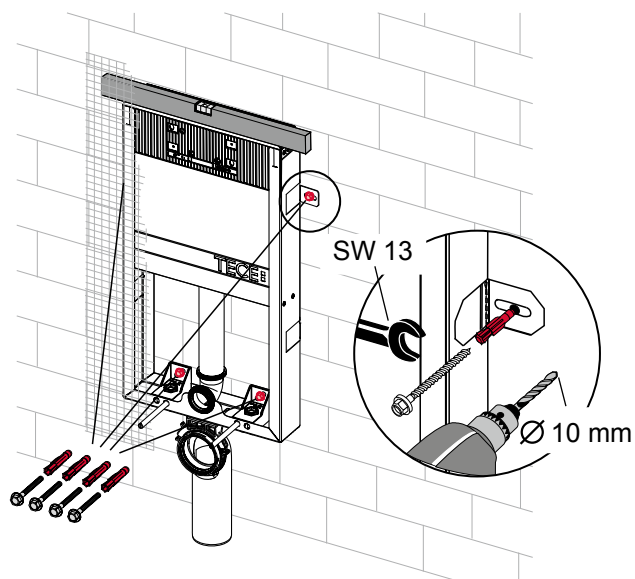
min. 30 mm



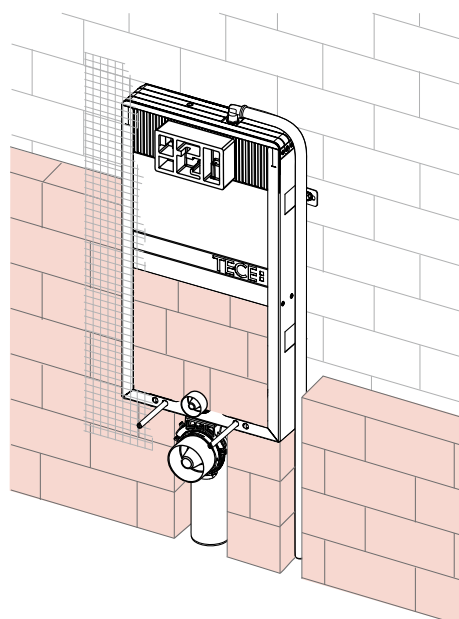
min. 30 mm



When installing in front of a solid wall, screw the TECecomcompact brick-wall toilet module to the designated brackets (above) or the elbow brackets (below).



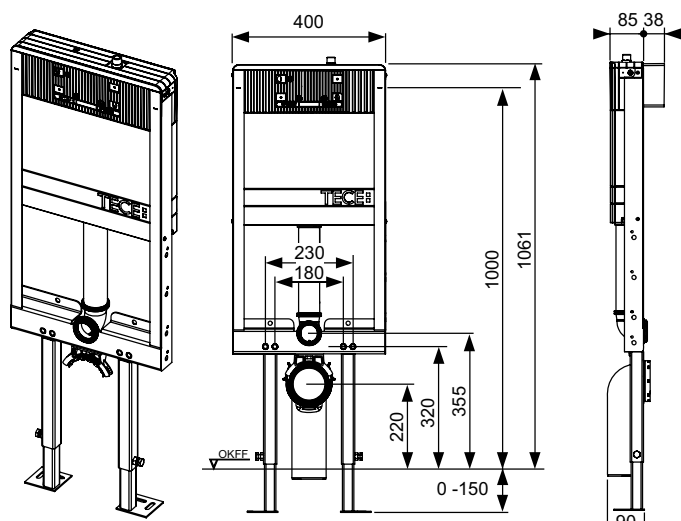
The brick-wall module must be completely built into the wall and all remaining cavities must be filled in.



The remaining steps are the same as those for installation in a solid wall.

TECEcompact – toilet module

TECEcompact toilet module



TECEcompact toilet module - Order Number 9500100

The TECEcompact toilet module (installation height 1061 mm) is suitable for all standard dry-wall installations. If a module is to be installed in a metal or wooden stud wall then the TECEcompact toilet module must be used. This toilet module can also be used in a brick-wall construction.

Additional fittings:

- Clearly visible: installation mark.
- Robust, self-supporting mounting frame. TECEcompact toilet modules are statically self-supporting and durable up to 400 kg.
- Pilot holes for mounting in UA-profile walls and wooden stud walls.
- Strong crossbeam with four threaded holes for ceramics with a mounting distance of 180 or 230 mm. The crossbeam ensures that the ceramic is safely secured even under high loads.
- Adjustable foot supports for floor projections of 0 to 150 mm. For attaching to the floor.
- Drainage bend (PVC) DN 90 with adapter (HDPE) DN 100. This allows waste water pipes DN 90 and DN 100 to be easily attached. The DN 90/100 adapter can also be individually installed as a horizontal outflow in the module. Downpipes behind the module are then easy to connect directly.

Using TECEcompact module technology increases the possible areas of installation:

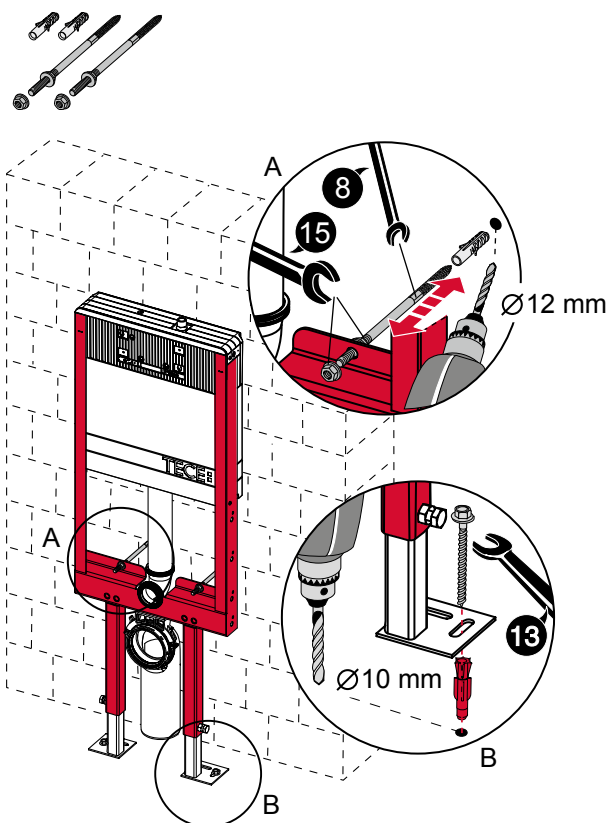
- in front of a solid wall
- in a C-profile wall
- in a UA-profile wall
- in a wooden stud wall

Shell installation TECEcompact toilet module

Installation in front of a solid wall



The TECEcompact toilet module is also suitable for individual mounting. Compatible attachments are available for various installation situations. The TECEcompact toilet module is statically designed so that, in most cases, it only has to be attached to the load-bearing structural shell at four points.

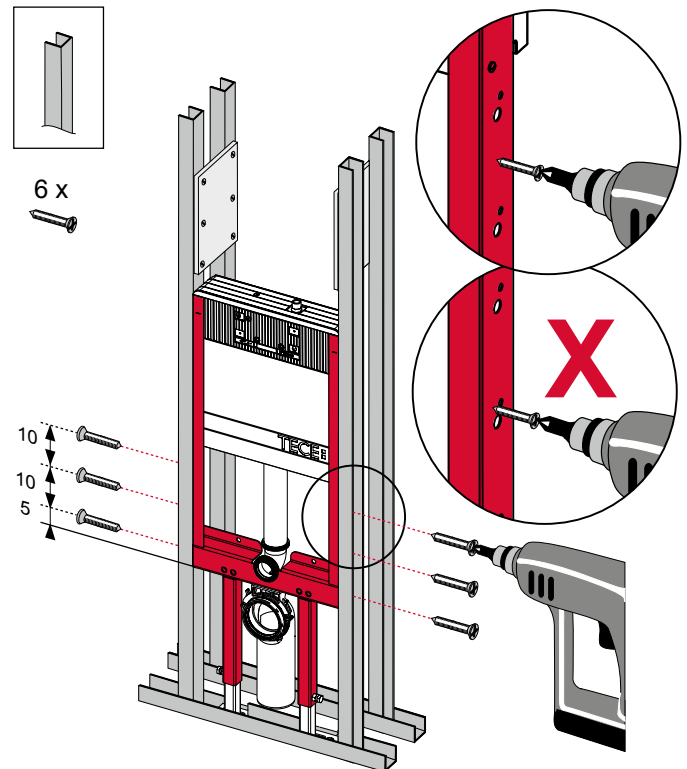


Additional attachments, such as elbow brackets are not necessary because increased loads (e.g. accessible toilet attachments) are supported by the closely spaced feet. The mounting material supplied with the mounting unit is suitable for mounting on solid walls. Use suitable cavity plugs when mounting in front of lightweight partition walls. The partition wall should also be reinforced at the mounting points. The procedure must be done in line with the dry-wall construction. Follow the installation instructions for the dry-wall system used.

Installation in C-profile metal stud walls.

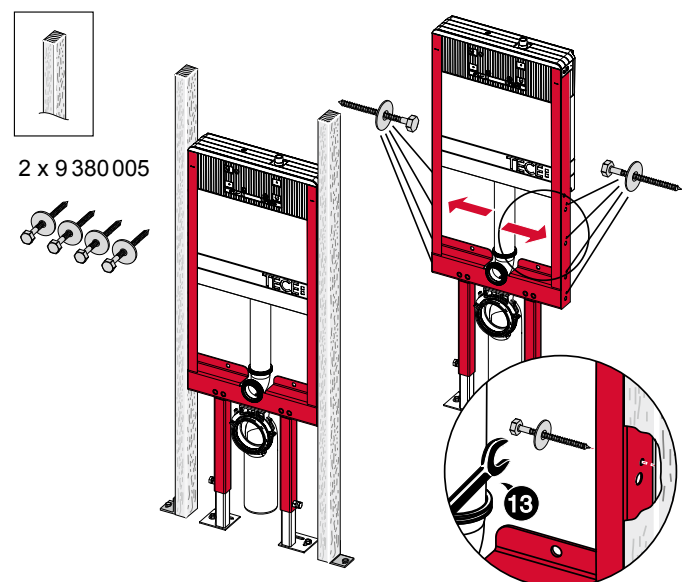


In double-stud walls the individual stud rows must be tightly connected in accordance with DIN 18183. To achieve this, 30 cm long brackets are screwed between the C-profiles. Two reinforcement brackets must be attached directly above the compact toilet module. Using the supplied self-tapping screws the module is screwed to each of the four points with the wall profiles. The module feet are at the front under the horizontal C-profile and can be dowelled to the floor.



Installation in a wooden stud wall

In addition to metal stud walls, the module can also be installed in wooden stud walls in accordance with DIN 4103-1. For this purpose, the frame can be mounted using special wood screws (order number 9380005) on the vertical struts.



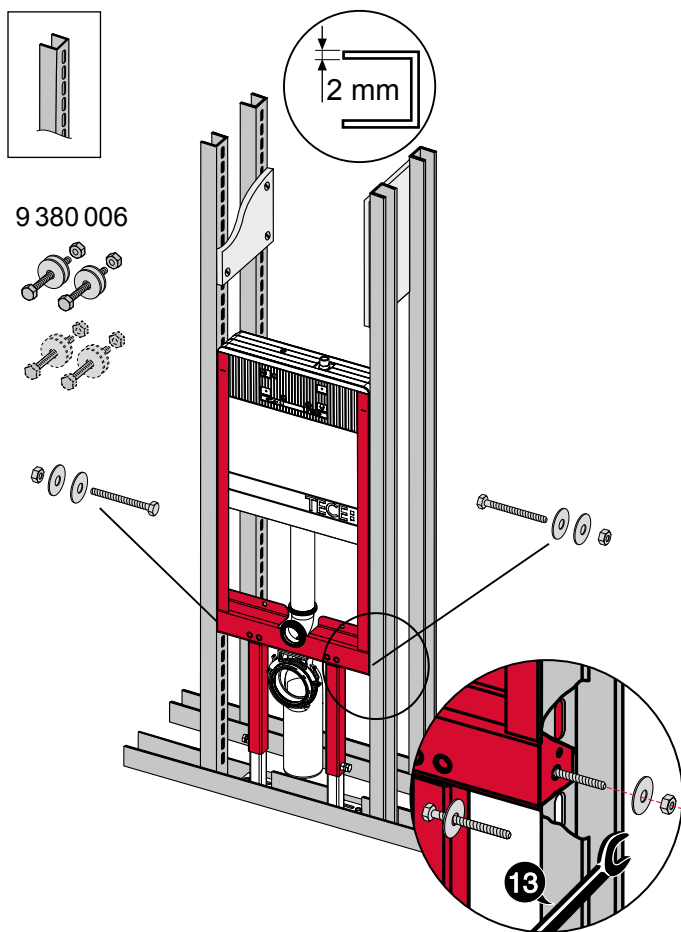
In addition, the pre-drilled holes in the side struts should be used to mount the TECecomact toilet module on the wooden struts. The holes are arranged so that there are at least two possible mounting options per strut.

TECEcompact – toilet module

Installation in floor-to-ceiling metal stud walls with UA-profiles

If especially wide or high walls have a higher rigidity, UA-profiles (DIN 18182 part 1) can be used instead of C-profiles.

For a disabled toilet facility only UA-profiles may be used for the front and rear struts for strength reasons. The installation of toilet facilities in public places for disabled and elderly people is in accordance with DIN 18040-1.

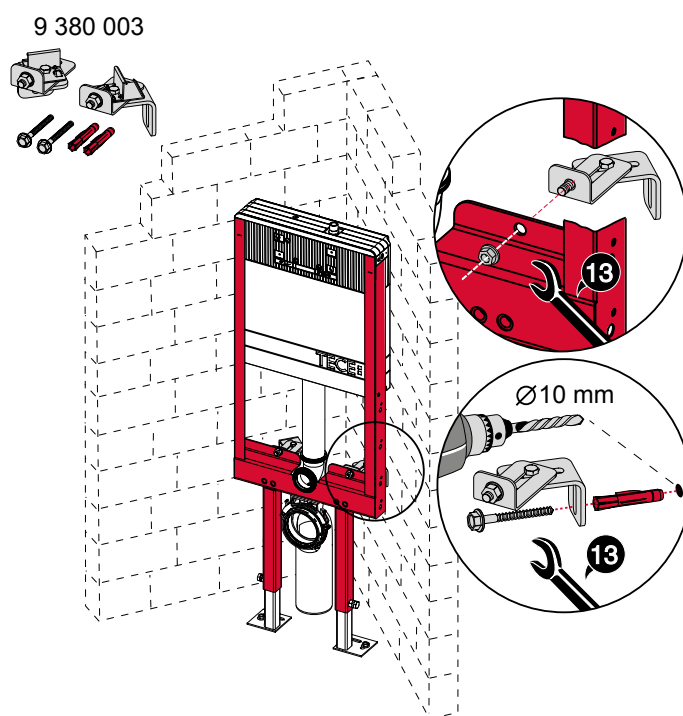


Due to the prescribed seat height of 48 cm, the compact toilet module must be mounted 5 cm higher compared to the standard installation height. The TECEcompact toilet modules have pre-drilled holes in the side struts for mounting modules to the UA-profiles. The holes are arranged so that there are at least two possible mounting options per strut.

Installation with module attachment for wall corner installation



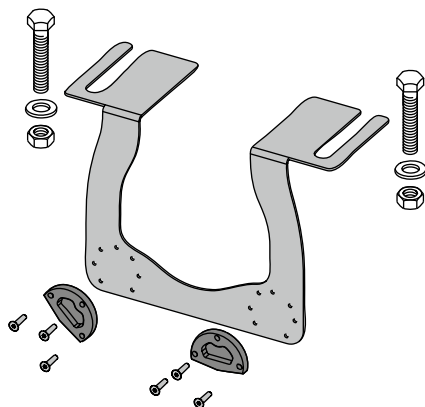
The toilet module can be directly attached to the structural shell with the corner attachment. The corner installation requires very little space. The depth from the front edge of the module up to the corner is only 28 cm. Despite the small installation depth, it is possible to install a drainage pipe DN 100 behind a toilet module.



Upgrade kits for TECEone

Upgrade kits are available to combine wall-mounted TECEone shower toilets with a wet-wall construction or toilet module.

Upgrade kit for TECEcompact brick-wall toilet module

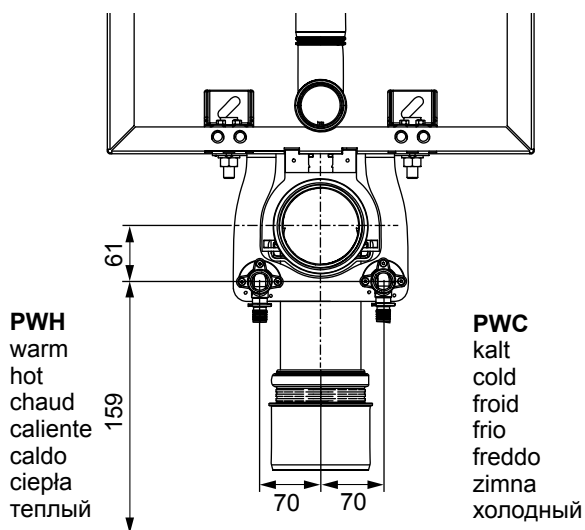


TECEcompact upgrade kit for brick-wall installations - Order Number 9880047

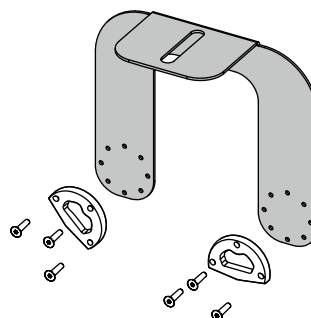
The shell installation set consists of:

- Holding plate for hot and cold water connections
- Sound-absorbing components for two wall panels
- Mounting materials

The holding plate is attached to both elbow brackets using the screws supplied.



Upgrade kit for TECEcompact toilet module

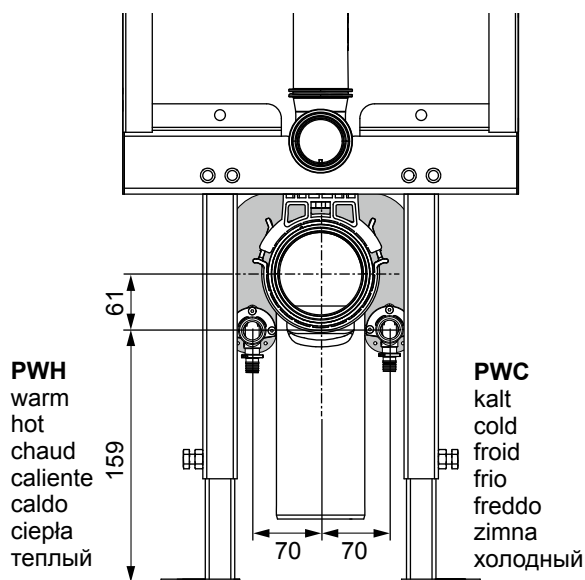


TECEone upgrade kit for dry-wall installation - Order Number 9880055

The shell installation set consists of:

- Holding plate for hot and cold water connections
- Sound-absorbing components for two wall panels
- Mounting materials

The holding plate is mounted to the bottom of the module frame using the existing drainage bend attachment.



TECEcompact – cistern

TECEcompact cisterns

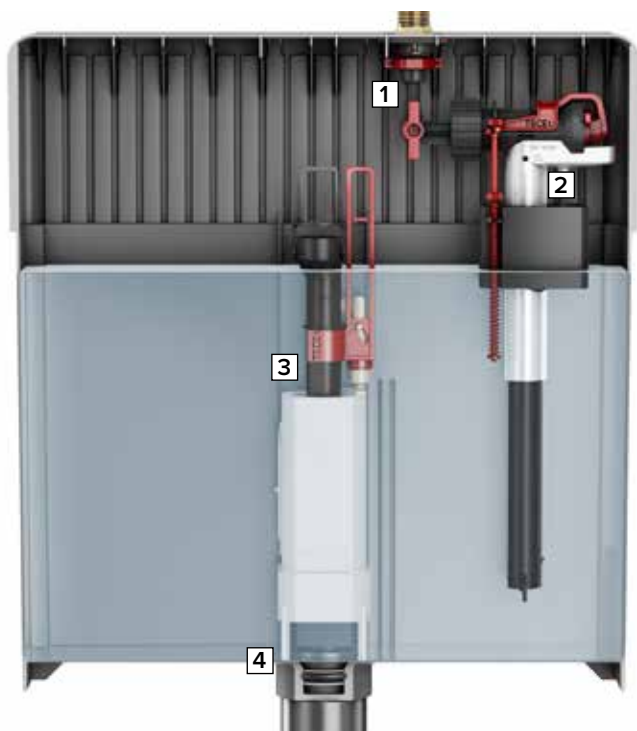
The concealed cistern from TECE is a universally adaptable standard cistern. By using different frames the cistern can be installed in dry or wet-wall constructions. The TECEcompact cistern is compatible with all manual TECE flush plates.

Features of the Compact Cistern

- Cistern made of impact-resistant plastic
- 6.5 litre tank capacity
- Adjustable flush volume for every situation:

4.0 and 3 or 2.5 litres 4.5 and 3 litres 4.8 and 3 litres 6.0 and 3 litres

- Condensation water insulated tank
- Hydraulic filling valve
- Can be combined with all manual TECE flush plates
- Single or dual-flush volume systems available
- Robust lever mechanism
- Easy to install
- Self-explanatory technology

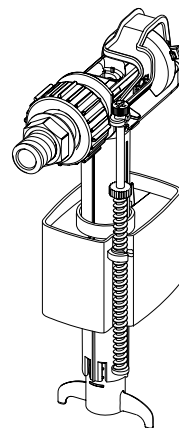


TECEcompact cistern with

1. Stop valve
2. Filling valve F 10 with M 30 thread connection
3. Drainage valve A4
4. Valve seat with inserted throttle

Filling valve F 10

The replacement filling valve F 10 fits universally in all TECE cisterns and in many competing cisterns.



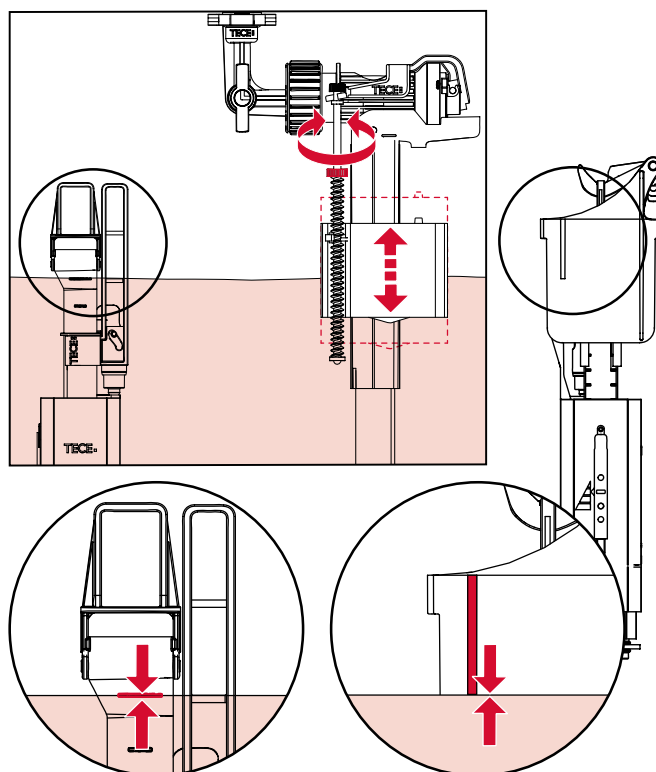
Filling valve F 10 - Order Number 9820353

Properties:

- Low-noise in accordance with acoustic group 1 (DIN 4109)
- Functional range: 100 hPa to 10,000 hPa
- Flow pressure: 0.1 to 10 bar
- Minimum flow pressure: 500 hPa
- Adjustable fill level
- Filling time with 3 bar: 30 secs for 3 l / 60 secs for 6 l
- Compact design
- Adjustable outlet pipe

Setting the fill level (filling valve)

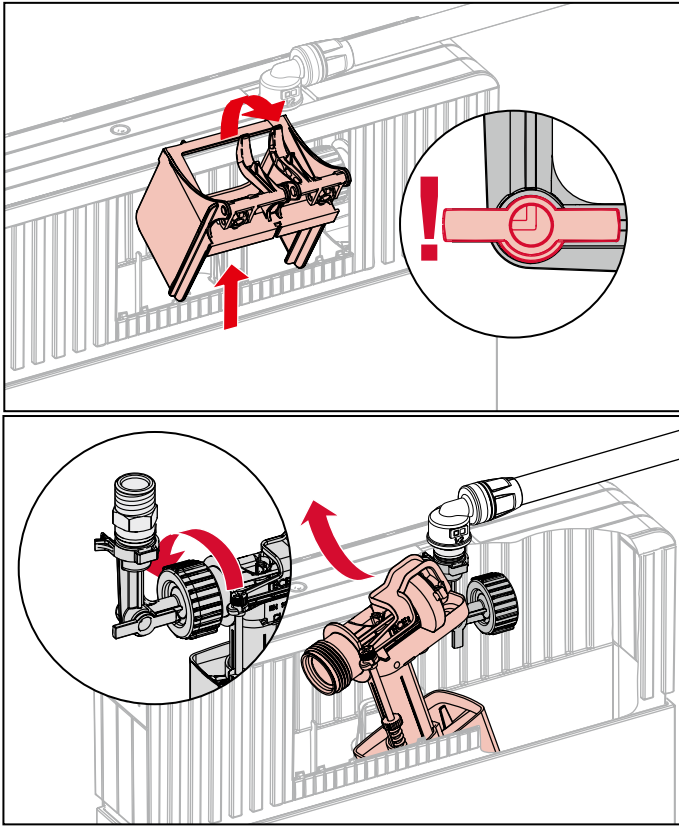
The fill level in the cistern can be set by turning the adjustment spindle on the filling valve.



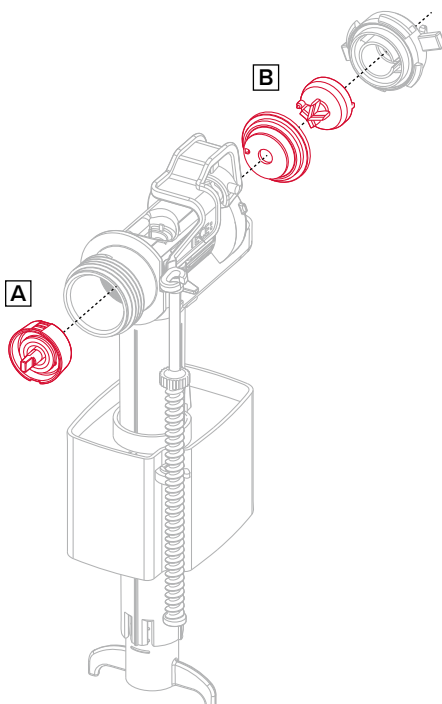
The height should be set so that the water reaches the upper mark on the overflow and the mark on the actuation block (see figure).

Removing the filling valve

To remove the filling valve open the splash guard and take out the actuation block. Loosen the union nut and remove the filling valve

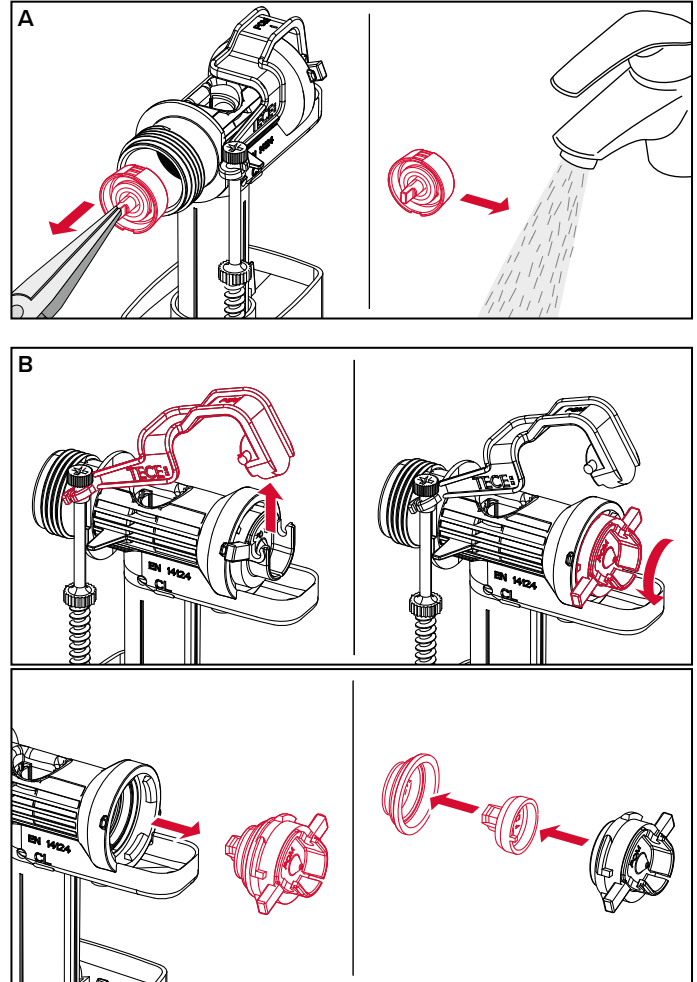


Cleaning the filling valve



The inlet component (A) or the membrane of the pilot valve (B) can be cleaned if they become dirty due to polluted water.

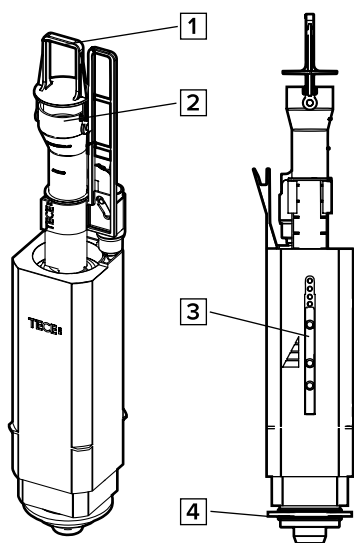
To do this, remove the parts and simply hold them under running water.



If necessary, you can obtain replacement parts for the filling valve using the order numbers 9820382 (valve lever set) and 9820383 (sealing kit).

Drainage valve A4

The drainage valve A4 is installed exclusively in TECEcompact cisterns.



Drainage valve A4 (Order Number 9820384) with

1. Connecting rod large
2. Connecting rod small
3. Sliding lever for flush volume
4. Foot seal

Dual-flush technology

During everyday use a considerable amount of drinking water is used to flush toilets. The intelligent solution from TECE goes a long way towards saving water. With dual-flush technology the small flush volume is set to 3 litres and the large flush volume can be set to 4.0 / 4.5 / 4.8 or 6.0 litres. The default setting for the dual-volume flush is 6.0 litres for the large flush volume and 3 litres for the small flush volume.

Single-flush technology

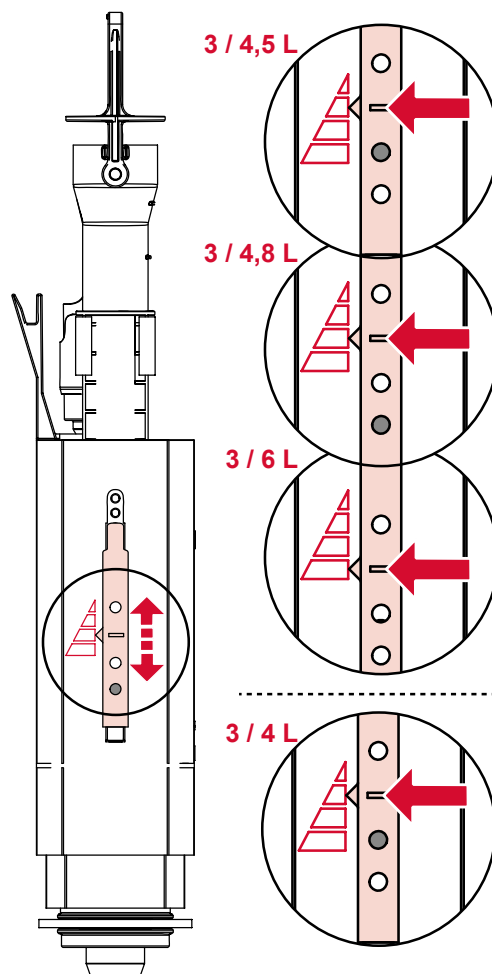
Single-flush technology is also possible with TECE cisterns and TECE drainage valves. However, with this flush option only the large flush volumes of 4.0 / 4.5 / 4.8 or 6.0 litres are available.

General

Due to the easily adjustable drainage valve settings the flush volumes can be adapted for each specific situation. In the new builds with custom pipes, gradients and using a 4.5 litre ceramic, it is possible to have a 4.5 litre saving flush in combination with a 3 litre flush.

Setting the flush volumes

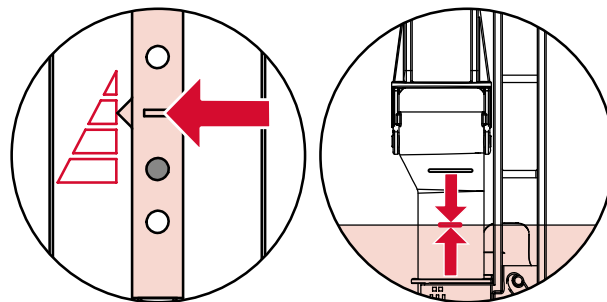
Adjusting the flush volume is performed centrally using a sliding lever, which is located on the side of the main part of the drainage valve.



The large flush volume can be set to 4.0 / 4.5 / 4.8 or 6.0 litres.

The default setting is 6 litres. To change the large flush volume the drainage valve must be removed from the cistern. To do this, the splash guard and the actuation block must be removed. Then the drainage valve can be taken out of the cistern. The sliding lever is located on the side of the main part of the drainage valve. Move the sliding lever to the desired flush volume. This increases or decreases the flush volume.

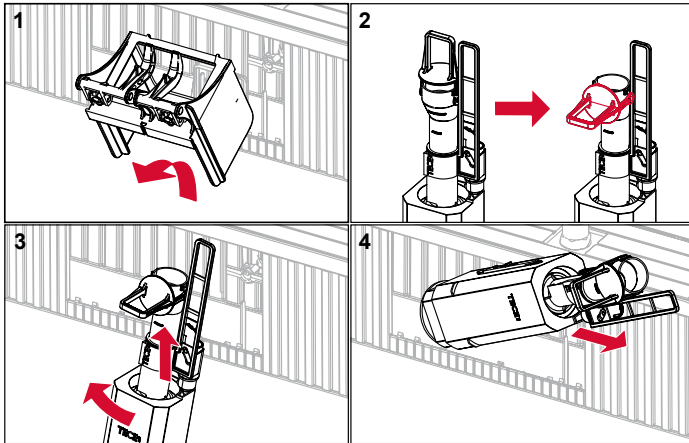
This does not change the small flush volume and it remains set to 3 litres.



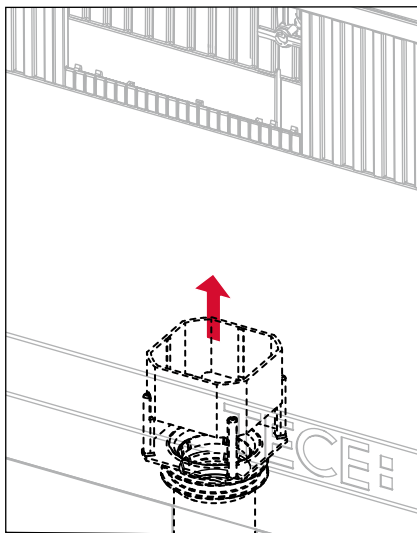
To reduce the default large volume to 4.0 and the small volume to 2.5 litres, the tank water level lever above the filling valve must also be moved to the lowest mark on the overflow.

Removing the drainage valve

To remove the drainage valve open the splash guard and take out the actuation block. Tilt the connecting rod (large) and remove the drainage valve - as shown in the diagram.



After removing the drainage valve, the valve seat can be removed by pulling it upwards.

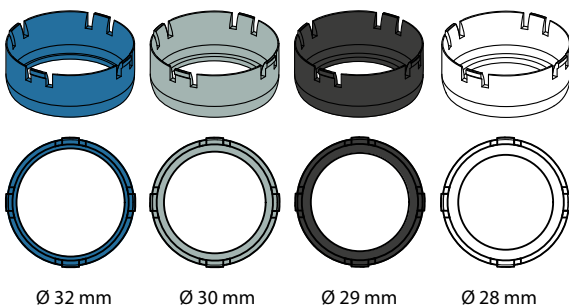


Throttle set

Problems with toilets not flushing correctly can be solved by using a throttle set.

The throttle set includes four different throttles:

- Blue: Diameter 32 mm (100%)
- Grey: Diameter 30 mm (90 %)
- Black: Diameter 29 mm (80 %)
- White: Diameter 28 mm (70 %)



Ø 32 mm

Ø 30 mm

Ø 29 mm

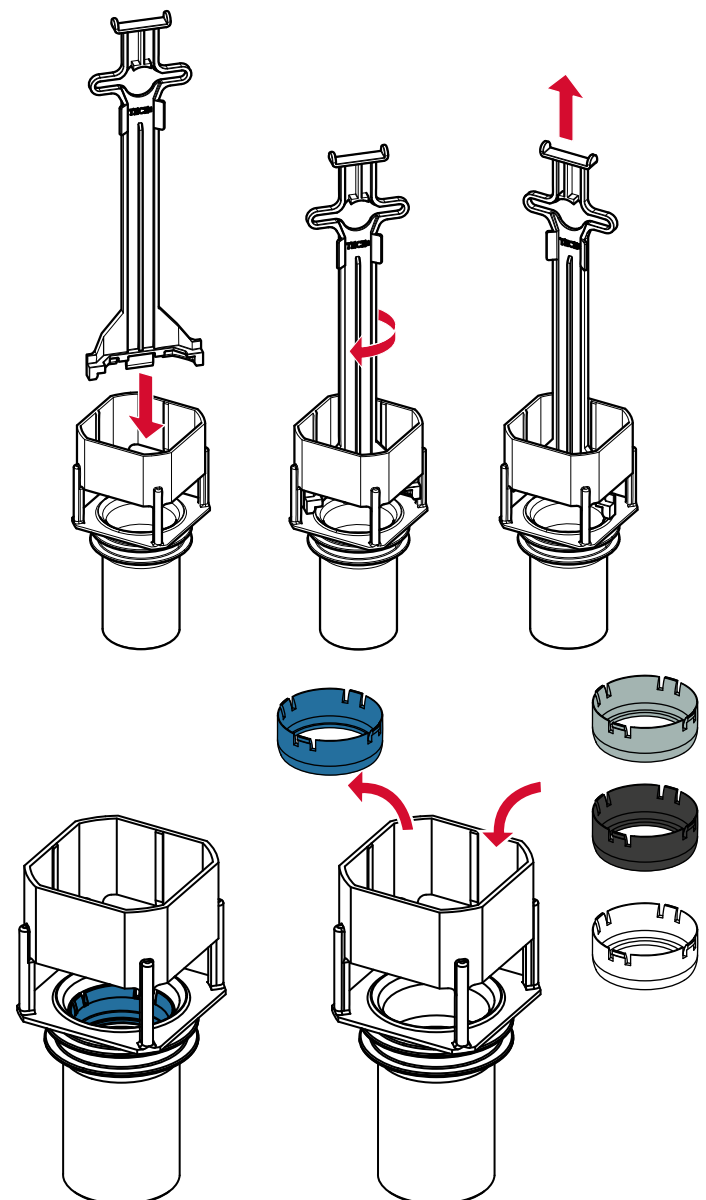
Ø 28 mm

Reducing the flushing pressure

To prevent overspray, the flush flow can be reduced using a throttle set. To control the flushing pressure, a throttle with a smaller internal diameter can be used.

Increasing the flushing pressure

If a toilet ceramic is not being correctly cleaned then the flushing pressure for standard cisterns can be subsequently increased. To increase the flushing pressure install a throttle with a larger internal diameter or remove the inserted throttle.

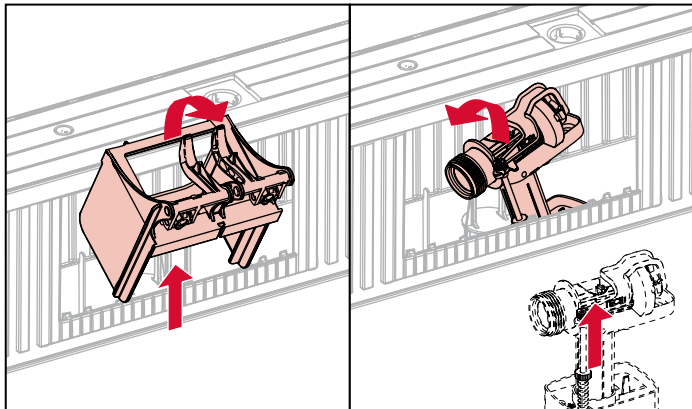


The flush flow throttle can be easily installed in the valve seat of the drainage valve.

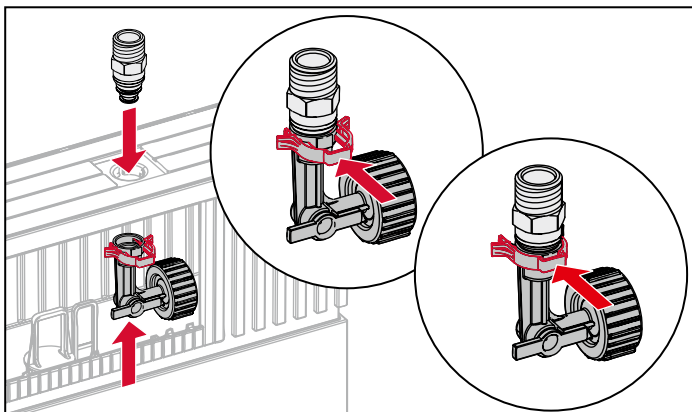
Assembly

Water connection

First the jack must be removed so that the filling valve can be taken out of the cistern.

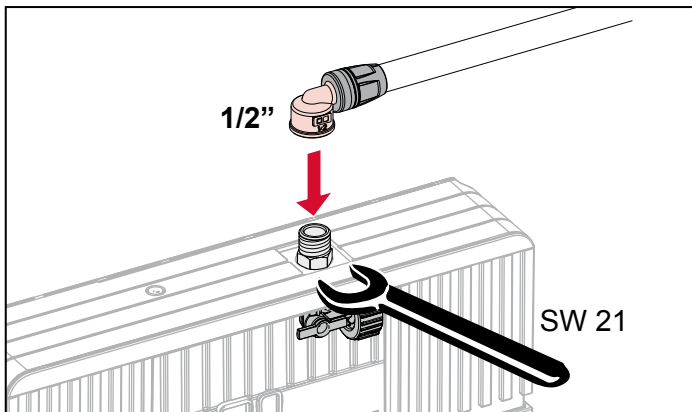


Then the connection fitting is clicked into place in the top part of the tank. You will hear a “click” when it is correctly engaged.



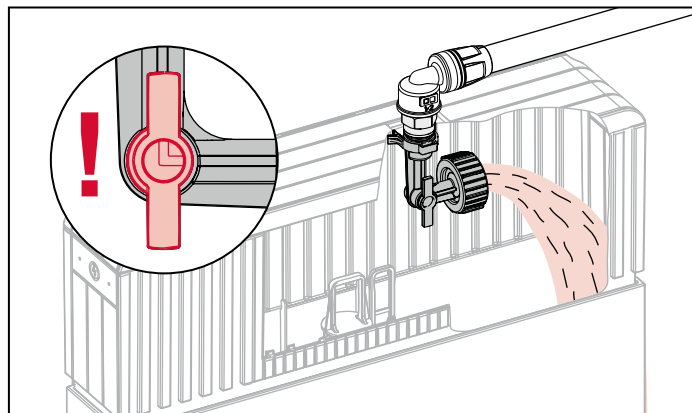
The angle valve is attached from below to the connection fitting and secured with the cotter pin. Check that the angle valve is closed.

The water connection can now be installed and the pipe can be screwed on.

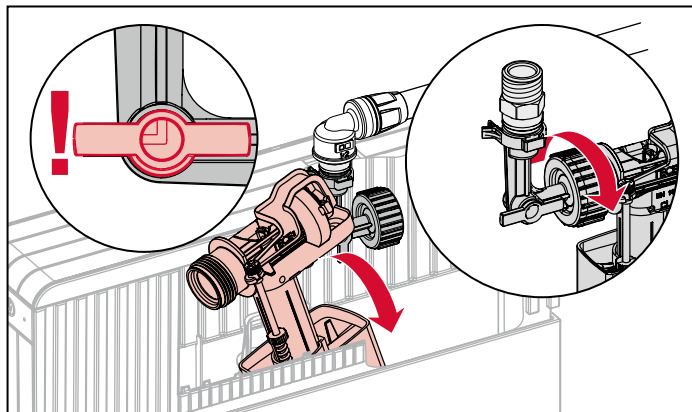


Detailed installation

The pipe is flushed out by opening the angle valve and draining the water into the compact cistern.

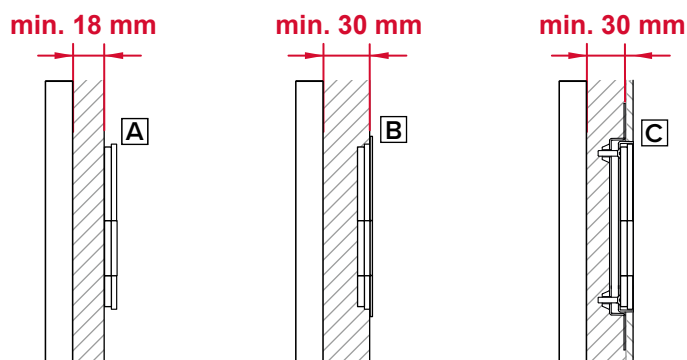


After the flushing process the filling valve is inserted into the cistern and screwed to the angle valve.



Once the jack and the splash guard have been reinstalled, the protective shell can be attached to the splash guard with two screws.

The wall construction must be at least 18 mm if the actuation is located on the wall (A). A minimum of 30 mm is required to install the TECESquare II (B) and when using the flush-mounted installation frame (C).



Service

Despite the small inspection opening there is ample space to work within the cistern. After removing the flush-plate cover, the flush-plate installation frame including the splash guard can be removed as one unit using a flat-head screwdriver.

This approach is easy and saves time because it avoids laborious disassembly of individual components.

Toilet flush plates

All manual TECE flush plates are compatible with the TECEcompact cistern!



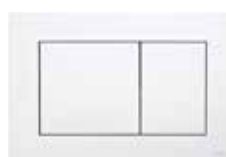
TECEsquare



TECEloop



TECEplanus



TECEnow



TECEambia

The toilet flush plates shown here only give an overview of the available product range. See the whole range online at www.tece.com. There is also a flush plate configurator, which allows you to select the material and colour for the buttons and covers.

Please note the necessary installation dimensions and wall structure for the flush-mounted frames.

All data contained in the Technical Guidelines has been compiled with the utmost care. The correctness of the data presented cannot be guaranteed, however. TECE assumes no liability for damages resulting from the use of this information. Text and images are protected by copyright law.

© Copyright 2018, TECE GmbH, Hollefeldstraße 57, 48282 Emsdetten, Germany

More information on
www.tece.com

TECE GmbH
P +49 25 72 / 9 28 999
international-business@tece.com
www.tece.com