

Installation & Assembly

**STRAIGHT-
FORWARD
STRESS-FREE
WORK**

CLOSE TO YOU.

Understanding people and their requirements – that is what motivates us.

In this spirit, and with our customers in mind, we develop products and services that make working on site straightforward and stress-free.

A WORLD OF SOLUTIONS.

TECE is an innovator in the sanitary installation sector. We make an impact with products that can be used to build an entire world. With well-thought-out solutions, reliable technology, long-lasting functions and timeless design.

Get to know us

We are a medium-sized, family-owned and run business with headquarters in Emsdetten (Germany). We have been developing products and services for fitters, planners and architects ever since the company was established in 1987. Today, with 22 international branches, we feel at home all over the world and maintain open communication with our partners in the full spirit of "Close to you".



Wall sections and pre-wall installations

Bathroom wall sections and system shafts for construction projects



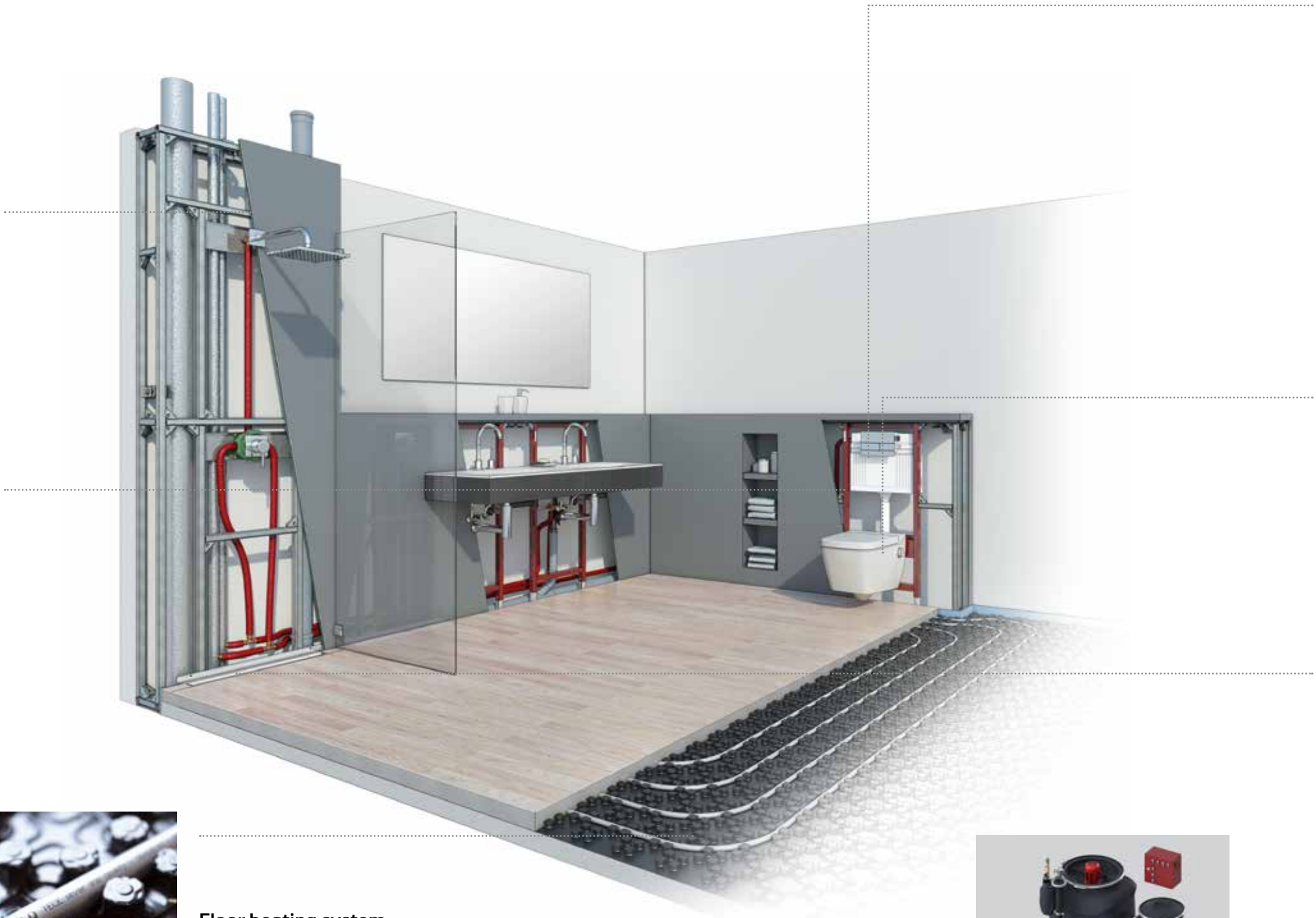
Pipe systems

Push sleeve systems, push-fit systems and floor heating systems



Floor heating system

Complete system of heating pipes, installation accessories, manifolds and controls



Flush plates

Selected collections for private homes or public buildings, with different designs, materials and colours



Sanitary systems

From toilet ceramics and flush plates to sanitary modules



Drainage systems

Shower channels, shower profiles and point drainage systems



Grease separators

Plastic grease separators for free-standing or underground installation, mobile stainless steel grease separators and lifting systems



“It’s important to know precisely what’s needed for every trade and each specific task.”



“As a fitter, it’s only when you deliver a top quality service that your customers recommend you to others.”



“In an emergency, where else is the service required than directly on site?”

LESS STRESS: IN THE OFFICE AND AT THE BUILDING SITE.

Fitters perform extremely complex work – a demanding daily workload and various guidelines, standards and laws make sure of that. Three elements can help to make life easier in this respect: well-thought-out products, excellent quality and a direct on-site service.

“For me, quality means: installing, then not having to worry any more.”



02

Faster thanks to preassembly

As everything has to be done quickly on the building site, you need to work fast. When all the components are pre-assembled and compatible with each other, everything runs smoothly and within the planned budget.



Service close to the action

Not everything goes to plan on site. When things go wrong, someone should be available on site who can remain calm, identify the problem and come up with the right solution. Our customer advisers know their job inside-out and are on site when needed.

03



CONTENTS

06

Well-thought-out products

Keeping your mind free for more important matters.

16

Quality

Reliable – permanently.

24

Services

Support when it makes sense.

32

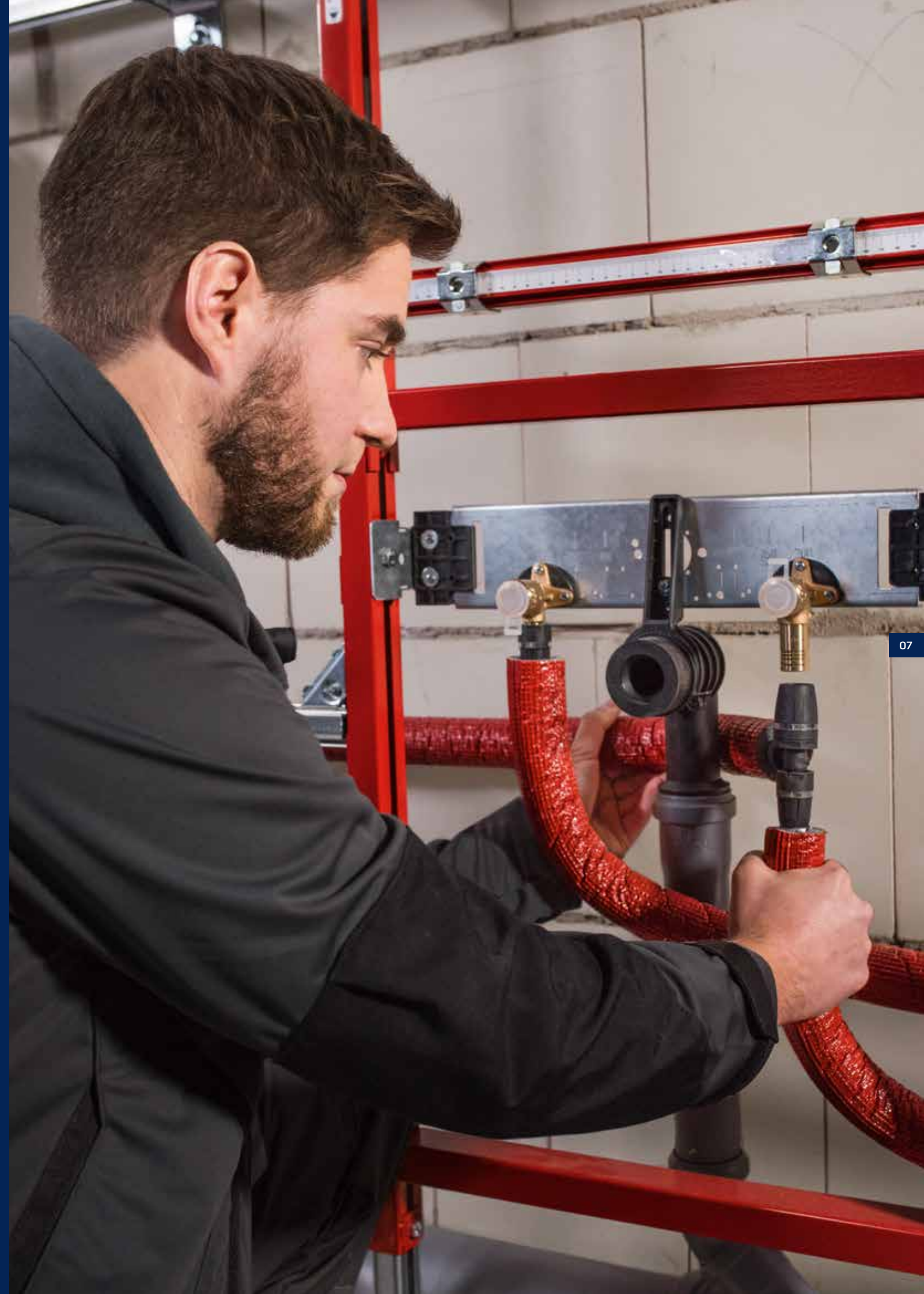
Academy

Run by professionals for professionals.

STRAIGHTFORWARD STRESS-FREE WORK

WELL-THOUGHT-OUT PRODUCTS

Keeping your mind free for more important matters.





1

OUT OF THE BOX. SET. GO.

Pre-assembled products are immediately ready for use. This is what TECE means by “Ready to install”. This approach saves time and hassle – and avoids errors.

Reaching your goal safely, meeting your target quickly

The seal of safety

Corner valves, reinforced hoses and fill valves on cisterns are pre-assembled and tested. During the structural work, the sealed cistern does not need to be opened. This saves time and the cistern’s functional fitness is not impaired by impurities in the tank.



2



3

Faster thanks to a foot brake

The foot brake developed by TECE enables straightforward and time-saving assembly by just one person. The TECEprofil module can be pulled up to the correct installation height with little force. In the process, the foot brake prevents the module from slipping backwards.

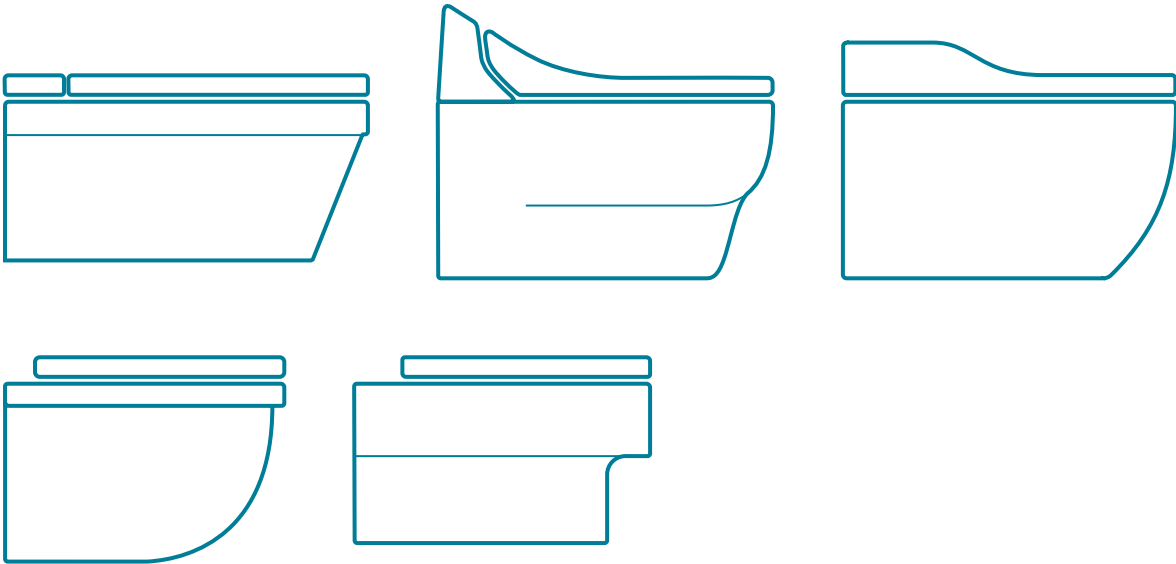
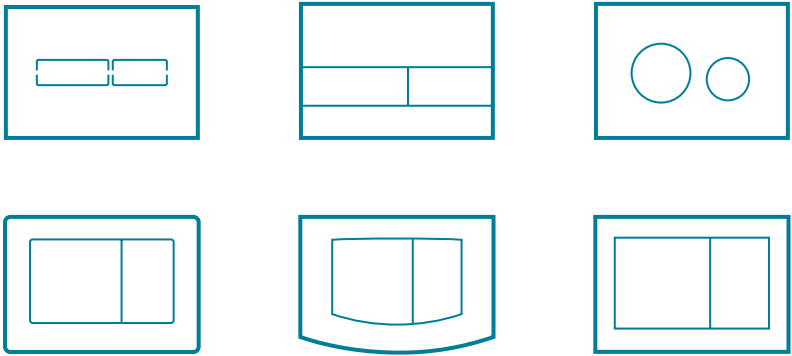
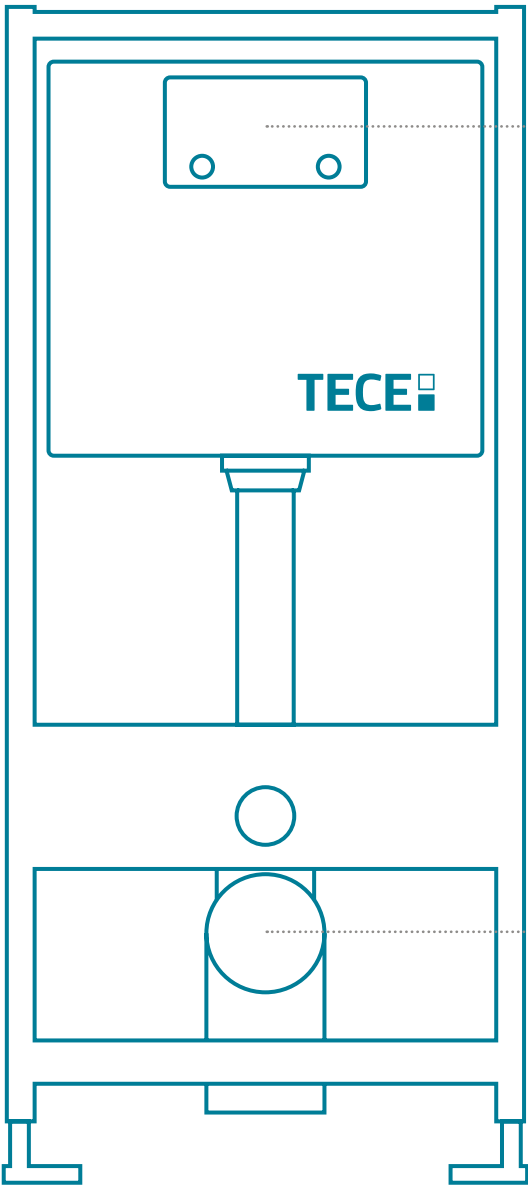
- 1 Simply unpack and install.
- 2 The cistern remains sealed until the fine installation phase.
- 3 The foot brake facilitates handling.

EACH PART FITS TOGETHER.

TECE products fit together perfectly, both in technical terms and as regards design. They can be universally combined within the same range and are compatible with other products from the sanitary sector.

Universal use with systems – made by TECE

- All flush plates fit on all cisterns.
- All toilet ceramics fit on all modules.
- The result: maximum flexibility when planning and implementing



LESS IS MORE.

A good modular system has very few components.
That means easy handling, fast installation, low storage costs – and multiple solutions.



= “hundreds of possibilities”

Diversity in installation

The TECEdrainline shower channel offers many possibilities during installation. Regardless of the position, installation height, length or design, TECE shower channels meet every requirement thanks to their modular design.

- 1 A few compatible components – many possibilities for new builds and renovations: the TECEdrainline shower channel range
- 2 Set up in the shortest time scales with just three components: TECEprofil – the stable pre-wall system for bathrooms
- 3 TECE pre-wall system



Three times as simple

With just three basic TECEprofil components, a complete supporting structure can be set up in the shortest time scales. Three simple components – the TECEprofil corner joint, section tube and wall mounting bracket – help to achieve a stable pre-wall construction. An Allen key is all that is needed to secure the connection. The connection can be loosened again with the Allen key at a later stage.



USER-FRIENDLY, DAY AFTER DAY.

Day after day, TECE sanitary installation systems distinguish themselves through their excellent, user-friendly design. They offer a high level of design, convenience, safety and efficiency.



Cisterns

TECE cisterns have an extra large 10-litre safety tank. This means that an immediate clean flush is no longer a problem. Flush volumes can be set according to requirements – water-saving and highly effective. Particularly old or narrow pipes, or pipes that are too flat can only be rinsed properly with large volumes of water. Another important detail is the exceptionally low-noise fill valve and the possibility of combining the system with any TECE flush plate.

Cisterns: an overview

- Cisterns with 10-litre volumes for an immediate clean flush
- WELL-LABEL: 4-star rating
- Extra low-noise filling valve



Drainline

TECEdrainline shower channels have proven their reliability millions of times over. Thanks to the perfected design, the internal area is quick and easy to clean, enabling optimum hygiene. On request, TECE shower channels can be equipped with a membrane odour trap especially for use in bathrooms which are not often used. This eliminates unpleasant odours and means that unwanted vermin don't stand a chance.



- 1 More volume, less consumption – the TECE cistern
- 2 Concealed and easy to clean – the TECEdrainline shower channel
- 3 No more unpleasant odours – the membrane odour trap

WELL

Water Efficiency Label

Manufacturer: TECE GmbH

Product category: WC flush system

Type: Flushing cistern

Model: Wandebau-Spülkasten

Registration number: WS10575-20130219

A

B

C

D

A

Water Efficiency Criteria

Flush volume 6,0 l

Flush volume 5,0 / 4,0 l

With flush stop function

Dual flushing

*

**

*

**

Information about use and installation: www.well-online.eu

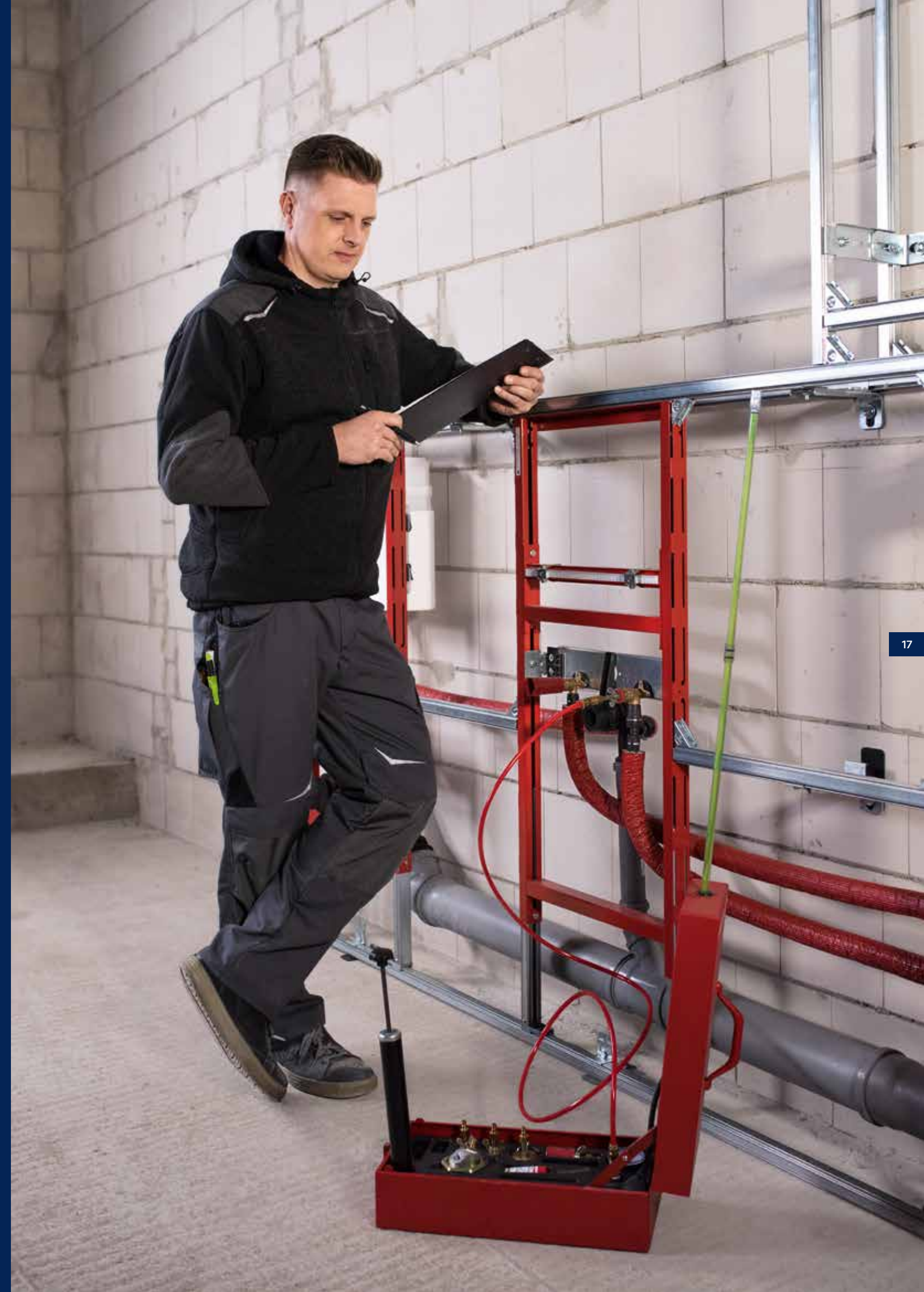
A Label of EUropean Valves

European Valve Manufacturers Association

STRAIGHTFORWARD STRESS-FREE WORK

QUALITY

Reliable – permanently.



A PIPE FOR LIFE.

At TECE, quality means permanently-functioning sanitary installation systems.
Such as the TECEflex pipe system. Thanks to its superior reliability, the same, unchanged system is still installed throughout the world today.



1

1 TECEflex has also been approved for gas installations in many countries.
2 TECEflex, the pressure-sleeve system



“For 25 years, millions of reliable pipe connections have been created for drinking water, heating, gas and compressed air. For me, that means consistent quality.”

Connect easily

Install flawlessly

TECEflex is an error-tolerant system. The particularly thick-walled pipe is expanded before simply being pushed over the O-ring-free fitting with the pressure sleeve. The expansion means that there is minimum pressure loss in the connection. Even gas applications can be installed with a reliable seal.

One system for all situations

TECEflex is an all-rounder among pipe systems. The system has been approved for drinking water, heating, gas and compressed air. The O-ring-free connection technology offers maximum safety.

1 The pipe is extremely durable thanks to its thick-walled, robust inliner



2

2 Any incorrectly pressed connections can be easily identified during pressure testing by liquid escaping from the loose-fitting pressure sleeve.

3 Made of just one component, the fitting has no clearance volume, eliminating the need for a sensitive O-ring.

LABORATORY ENDURANCE TESTING.

At TECE, it's not just the individual components that are tested for functional safety – the interaction of all the components in the entire system is also inspected.



The actuation mechanism of flush plates is subjected to a 200,000-cycle fatigue test and should remain fully operational afterwards.

Reliable quality

- Fatigue tests in our own laboratory
- Tests by independent institutes
- Inspections during series production

Pushed to the limits

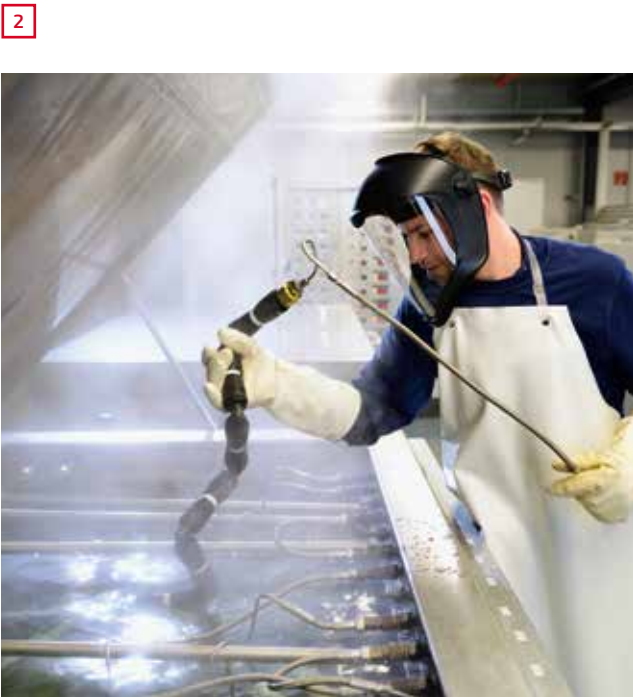
TECE runs its own laboratory with automated test benches for fatigue and endurance tests. This is where the minimum values required by respective standards are monitored, and, beyond this, the actual application limits of products and systems are determined.

All-round protection

Our quality assurance process goes through many stages and starts testing the raw materials even before production. The individual manufacturing steps involved in the production process are then inspected. Prior to the inventory valuation, tests are carried out on the final product, either individually or as part of the overall system.



Pipes and connections undergo pull-out resistance tests to ensure maximum safety. This guarantees that the installation will remain stable in the long term.



A "testing tree" with various connection points is tested for leaks in a water bath at 90°C and 10 bar. Any leaks on faulty components can be quickly identified. All produced parts are discharged for further checks via the batch tracking system.



In the testing laboratory for pipe systems, points are indicated on the standard time-to-rupture curve and monitored. For instance, the service life of a pipe sample at 90°C and 10 bar is measured and recorded.

- 1 Fatigue testing with flush plates and cisterns
- 2 Test tree in a water bath
- 3 Tensile strength test
- 4 Measuring standard time-to-rupture curve points



1



“Sound insulation and fire protection are extremely important to us. That’s why we test our products under real-life conditions.”

Independently tested

Independent testing bodies such as the “Fraunhofer-Institut” test individual components and complete bathroom wall sections, in some cases in extremely demanding structures. The test certificates issued by this institute form the basis for approvals and certificates.



2

ON THE SAFE SIDE.

Whether in a detached house, a residential building, a nursery school or a hotel, TECE products comply with the entire range of legally required approvals at an international level.

1 Sound insulation test for bathroom wall sections
2 Fire resistance test with TECEsystem

Signs of quality

International products require international approvals. For that reason, TECE’s pipe systems are continuously monitored by a whole range of international external inspection bodies.



SERVICES

Support when it makes sense.



AT THE BUILDING SITE.

TECE technicians are experts in the field and they provide their specialist knowledge on site. This enables them to offer fast and comprehensive on-site assistance.



“Recently, I had a problem on site. One phone call to TECE was enough; that same afternoon, a TECE technician called by.”

Service close to the action

Help at all times

On request, TECE can assist you during every phase of the construction process – from planning to completion. TECE experts can also give product briefings on site – if necessary, bringing any missing parts with them.

Advantages at a glance

- Comprehensive services for all project stages
- Customised manufacturing
- Expert assistance on site

¹ Service on an equal footing – TECE technicians have many years of practical experience.

DURING PLANNING.

TECE Service provides assistance with planning pipe networks and bathroom wall sections, costing and requests for quotations – by phone, fax or email.



1

All your questions answered

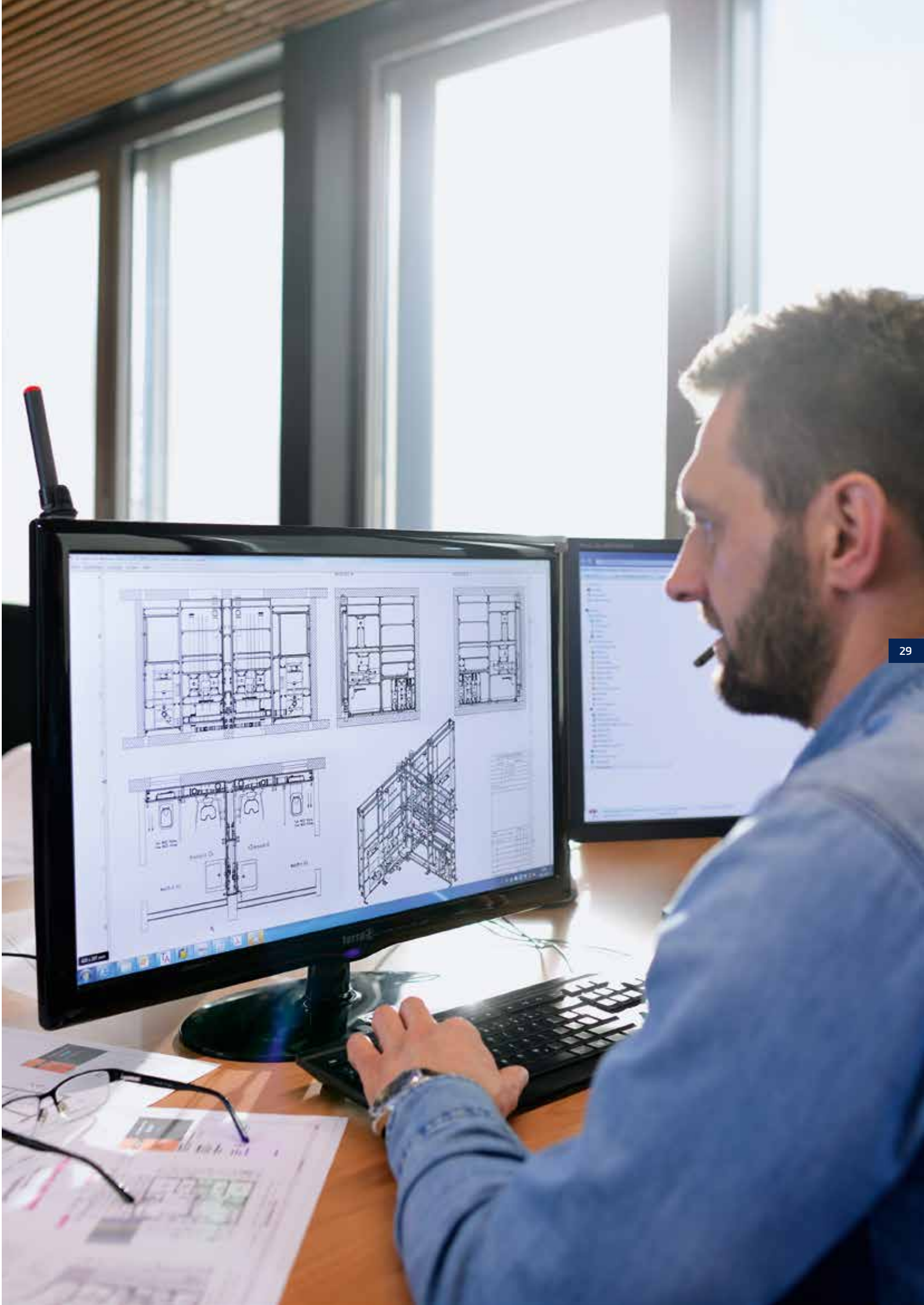
Urgent questions need quick answers. It is the only way to sort problems out straight away.

Staying ahead

TECE employees are actively engaged in the work of standardisation committees. Their knowledge and skills are always up-to-date. So the latest information is delivered directly by the service technicians to the fitters.

1 Rapid assistance by phone or email
2 Planners lend their skills to provide support.

2



SALES SUPPORT.

TECE offers different types of effective sales support, with exhibition samples, planning aids, digital configuration tools and various devices to ensure business dealings.



1

Exhibition samples

Convincing samples are available for face-to-face consulting or exhibition areas. They can be used to reliably assess and select colours, shapes and materials during consultation meetings.



2

Digital services

TECE planning aids and configuration tools facilitate work throughout the entire project – when planning, at the site and especially when selling. They can be used to quickly assemble suitable components for a project and calculate the exact requirements.

- Digital services
- Configuration tools for shower channels, flush plates and toilet terminals
 - Fast layout tool and floor heating systems
 - Calculating pipe networks
 - Dimensioning and planning grease separators
 - Planning pre-wall systems
 - Product data base

1 Stress-free configuration thanks to modular components
2 Planning made easy with digital services

STRAIGHTFORWARD STRESS-FREE WORK

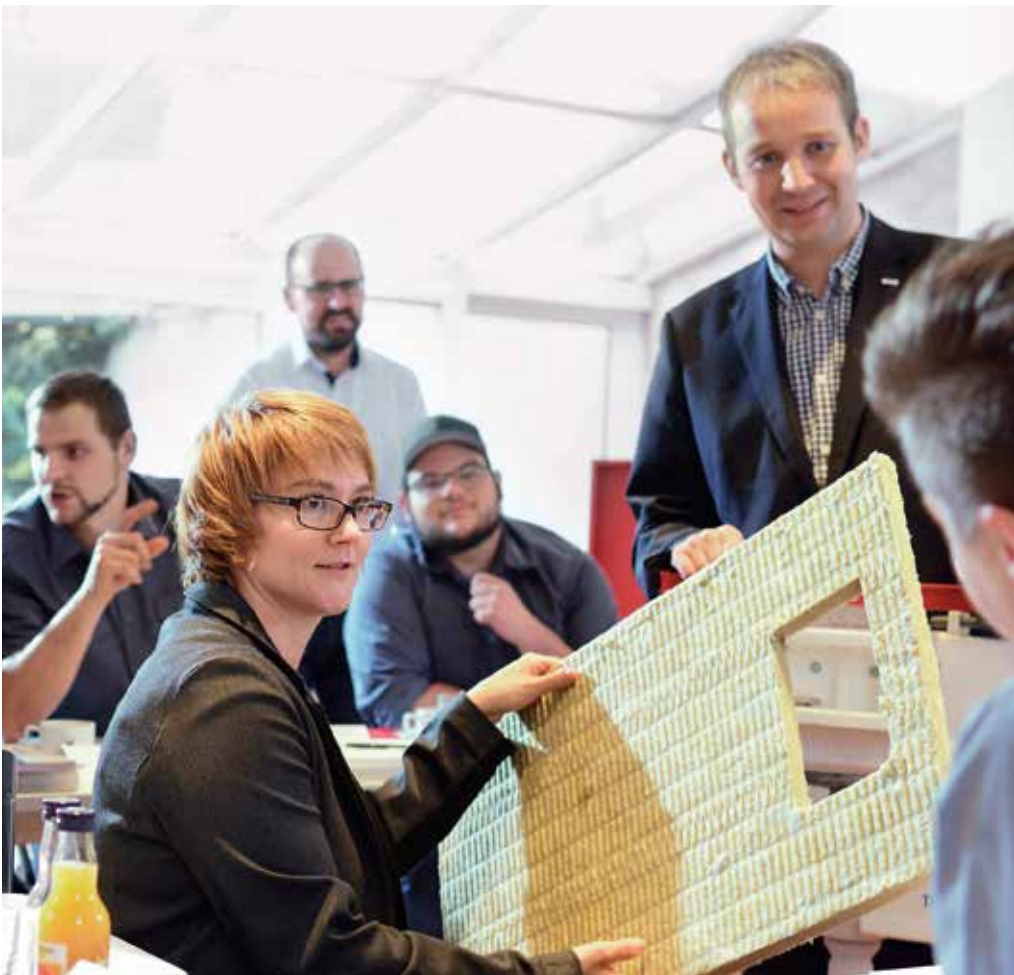
ACADEMY

Run by professionals for professionals.



KNOWLEDGE MOVES US FORWARDS.

The exchange of knowledge at the TECE Academy prepares us for the future. For that reason, the further training programmes, training courses and seminars offer much more than just information about new technologies and the latest guidelines.



1

Staying up-to-date

TECE understands everything about installation and assembly requirements – and it stays up-to-date through constant dialogue with planners, tradesmen, contracting entities and wholesalers, and also by working with boards and standardisation committees. The content of seminars is geared towards day-to-day work and upcoming innovations.

1 Clearly-illustrated presentations of products and systems
2 Special seminars, e.g. on barrier-free building, provide a valuable insight into topical issues.



“Seminars offer the ideal forum for sharing knowledge – and exchanging experiences with colleagues in an informal evening setting also provides further training.”

Competent and varied

TECE offers a wide range of training courses and seminars on current subjects and trends. From potable water hygiene and barrier-free layouts, fire protection and sound insulation, trend and product information and software training sessions. This means that our fitters are always one step ahead of the customer and competition.

For more information about the latest seminar programmes, ask for your regional point of contact at international-business@tece.de.

On-site training

When quick and uncomplicated training is required, TECE can also unconventionally provide training courses or seminars on site at your premises or even at the building site. The topics are tailored to individual requirements. TECE's customer service representative and the TECE seminar team will be delighted to tell you more about this.



2

GET TO KNOW US BETTER.

TECE provides expertise in further areas of competence.
Visit www.tece.com where you can find detailed information about the company, products and services.



Company

Close to you – The corporate brochure emphasizes TECE's innovative culture and describes the family company's philosophy.



Design & Creation

Freedom in design. The themes of Space & Architecture, Individuality & Design and Function & Technology are aimed primarily at architects and bathroom planners.



Project & Planning

Safety in terms of time, legal aspects and cost-efficiency. This brochure is intended for planners, architects and investors.

For more information, go to
www.tece.com

TECE GmbH
International Business
Phone +49 25 72 / 9 28 99 9
international-business@tece.de
www.tece.com